



25

Asian Art in London

27 October – 6 November

Asian Art in London
21 John Street
London WC1N 2BF
(Office address only)

+44 (0)7388 863 976
info@asianartinlondon.com
www.asianartinlondon.com

We are pleased to confirm that this guidebook is fully recyclable; please kindly recycle it after use.

The contents of this guide are believed to be correct at the time of printing. Nevertheless, the authors, publishers and Directors of Asian Art in London shall not be liable for loss or harm of any kind which may arise or result from any errors, inaccuracies or omissions.

Contents

Events

- 3 Introduction
- 4 Open Evenings
- 5 Joint Private View
- 6 What's On

Participants: Dealers and Galleries

- 10 Participant Specialities
- 12 Dealers and Galleries
- 30 Non-Exhibiting Participants

Participants: Auction Houses

- 32 Participant Specialities
- 33 Auction Houses
- 44 Auction Dates

Asian Collections, Societies, etc

- 50 Asian Collections in London
- 50 Asian Collections Outside London
- 52 Asian Societies and Cultural Centres
- 54 Other Asian Collections

56 Sponsors and Partners

74 Maps



The 28th edition of **Asian Art in London** takes place from **27th October – 6th November 2025**.

For the very latest updates and events calendar, please visit:
www.asianartinlondon.com

第二十八届伦敦亚洲艺术周将于
2025年10月27日至11月6日举行。

了解我们最新内容以及活动日程，
请登陆官方网站：www.asianartinlondon.com

Asian Art in London
+44 (0)7388 863 976
info@asianartinlondon.com
www.asianartinlondon.com

Open Evenings

Participating Galleries and Auction Houses are delighted to invite you to **Late Night Openings**.

At the time of writing, the following Participants will open late, but please check the **Asian Art in London** website for the latest information and please note that opening times will vary.
www.asianartinlondon.com

KENSINGTON CHURCH STREET

Saturday 1st November 17.00 onwards
Marchant

ST JAMES'S

Sunday 2nd November 17.00 onwards
Christie's | Michael Goedhuis and Tomasso |
Amir Mohtashemi | Roseberys

MAYFAIR

Monday 3rd November 17.00 onwards
Anrad Gallery | Bonhams | Lloyd Choi Gallery | Eskenazi Ltd |
Hanga Ten | Japan Print Gallery | Lyon & Turnbull |
Susan Page | Simon Pilling | Schoeni Projects |
Anastasia von Seibold Japanese Art | Jacqueline Simcox Ltd |
Slaats Fine Art | Sotheby's | Thang Long Art Gallery

Joint Private View with the V&A

To celebrate the 28th edition of **Asian Art in London**, a Joint Private View with the V&A of *Dimensions: Chinese Contemporary Studio Crafts* will be held in the Dome of the Victoria and Albert Museum on Tuesday 28th October 2025.

The Directors of **Asian Art in London** hope you will join our Participants, the directors and curators from museums worldwide, academic specialists, visitors and collectors to celebrate this year's edition.

DATE

Wednesday 28th October 19.00-21.30
Drinks and nibbles

VENUE

The Victoria and Albert Museum
Cromwell Road
London SW7 2RL

PRICE

Tickets: £30
For tickets, please contact:
sophie@asianartinlondon.com

Please note:
Admission by pre-booked ticket only.
Tickets are non-refundable and strictly non-transferable

DATES GALLERIES WILL BE OPEN (see page 10 for full gallery names)

OCTOBER

Gallery	27	28	29	30	31
1. Anrad Gallery					
2. Lloyd Choi Gallery					
3. Eskenazi Ltd					
4. Goedhuis & Tomasso					
5. Francesca Galloway	A	A	A	A	A
6. Hanga Ten					
7. Japan Print Gallery					
8. Lam & Co UK	A	A	A	A	A
9. Marchant					
10. Susan Page					
11. Atelier Pichvai	A	A	A	A	A
12. Simon Pilling					
13. Schoeni Projects					
14. Anastasia von Seibold					
15. Jacqueline Simcox					
16. Slaats Fine Art					
17. Thang Long					
25. Amir Mohtashemi					

NOVEMBER

1	2	3	4	5	6	
						1. Anrad Gallery
						2. Lloyd Choi Gallery
						3. Eskenazi Ltd
						4. Goedhuis & Tomasso
X	X	A	A	A	A	5. Francesca Galloway
						6. Hanga Ten
						7. Japan Print Gallery
A	A	A	A	A	A	8. Lam & Co UK
						9. Marchant
						10. Susan Page
A	A	A	A	A	A	11. Atelier Pichvai
						12. Simon Pilling
						13. Schoeni Projects
						14. Anastasia von Seibold
						15. Jacqueline Simcox
						16. Slaats Fine Art
						17. Thang Long
X						25. Amir Mohtashemi

X = gallery closed A = by appointment

AUCTIONS – open days for viewing during Asian Art in London
For full auction titles and sale days see individual entries p.44-47

	OCT	
Auction House	20	21
Bonhams: Knightsbridge		
Asian Part I		
Asian Part II		
Collector's Treasures: Asian Art, Online		
Bonhams: New Bond Street		
The Marsh Collection: Art for the Literati (Part IV)		
Priestley & Ferraro: 3 Decades in Chinese Art (1994-2025)		
Fine Chinese Art		
Priestley & Ferraro: 3 Decades in Chinese Art, Online		
A Life in Ceramics (Peter & Mark White Collection), Online		
China Observed Through Western Artists' Eyes, Online		
Beauties, Beasts and Blossoms, Online		
Islamic and Indian Art		
Christie's		
Personal Collection of Prince & Princess Sadruddin Aga Khan		
Art of the Islamic and Indian Worlds		
Modern & Contemporary Middle Eastern Art		
Highlights from the Woolf Collection of Chinese Jades		
Art of Asia inc. the Palmer Family Collection, Online		
Art d'Asie, Paris		
Dore & Rees		
Fine Asian Art		
The Eva & Aubrey Sweet Collection – Part II		
The Alan Bostock Collection – Part II		
The Mike Noel Collection		
Lyon & Turnbull		
Fine Asian Works of Art		
Roseberys		
Modern and Contemporary Middle East & South Asian Art		
Antiquities, Islamic and Indian Arts		
1000 Years of 100 Boys in Chinese Art		
Chinese, Japanese & South East Asian Works of Art		
Sotheby's		
Arts of the Islamic World & India		
Chinese Art		
Asia / 5000 Years, Online		

[illegible]

	Dealers	Speciality									
1	Anrad Gallery	I									
2	Lloyd Choi Gallery					K		Co			
3	Eskenazi Ltd				C	J					M
4	Michael Goedhuis and Tomasso				C	J		Co			
5	Francesca Galloway	Mi	I					E			
6	Hanga Ten					J		Co			
7	Japan Print Gallery					J					
8	Lam & Co UK				C						
9	Marchant				C						
10	Susan Page				C						
11	Atelier Pichvai Tradition & Beyond		I								
12	Simon Pilling					J		Co		M	
13	Schoeni Projects				C			Co			
14	Anastasia von Seibold Japanese Arts					J		Co			
15	Jacqueline Simcox Ltd			H	C						
16	Slaats Fine Art				C			Co		M	
17	Thang Long Art Gallery							Co	V		
25	Amir Mohtashemi Ltd	Mi	I					E			

- Mi Islamic & Middle Eastern Art
- I Indian Art
- S Southeast Asian Art
- H Himalayan & Central Asian Art
- C Chinese Art
- J Japanese Art
- K Korean Art
- E Export Art
- Co Contemporary Art
- V Vietnamese Art
- M Modern Art



Participants

DEALERS & GALLERIES

Anrad Gallery Ltd

1 | SEE MAP PAGES 77-79

St. George Street Gallery
Ground Floor, Sotheby's
34-35 New Bond St
London W1A 2AA

Anuradha Nayar
+44 (0)7778 483 498
anuradha@anradgallery.com
www.anradgallery.com



EXHIBITION HOURS

Late Night Opening

Mon 3 rd Nov	17.00–20.00
Sat 1 st Nov	12.00–17.00
Sun 2 nd Nov	12.00–17.00
Mon 3 rd Nov	11.00–20.00
Tues 4 th Nov	11.00–18.30
Wed 5 th Nov	11.00–18.30

TALK

The Living Tapestry

Tues 4th Nov

12.30

RSVP: anuradha@anradgallery.com

EXHIBITION

The Living Tapestry:
India's Natural World
Through Timeless Traditions

DESCRIPTION

The exhibition presents finely rendered depictions of flora and fauna from the natural world interpreted through the lens of distinct artistic traditions practiced by various communities across India. The artists are from the Gadhwa kam sculptors of Chattisgarh, Orissa Pattachittra, the Bikaner and Mughal miniature artistic traditions. The exhibition underscores our timeless fascination with the natural world, presented here through diverse visual languages

ON VIEW

1st–5th Nov

SPECIALISATION

Non-studio art from India |
Indigenous art

Lloyd Choi Gallery

2 | SEE MAP PAGES 77-79

Lloyd Choi
+44 (0)7845 723 512
contact@lloydchoigallery.com
www.lloydchoigallery.com

Conduit Street Gallery
Ground Floor, Sotheby's
34-35 New Bond St
London W1A 2AA



EXHIBITION

Heritage as Subject

DESCRIPTION

A curated presentation of contemporary works that reframe tradition as a living narrative, featuring museum-quality pieces by pioneering textile artist Lee So-ra and the distinctive ceramic voice of Choi Bo-ram

ON VIEW

1st–5th Nov

SPECIALISATION

Lloyd Choi Gallery is an international platform championing Korean artists, with a focus on craftsmanship-led practices that blur the boundaries between art, craft and design

EXHIBITION HOURS

Late Night Opening

Mon 3 rd Nov	17.00–20.00
Sat 1 st Nov	12.00–17.00
Sun 2 nd Nov	12.00–17.00
Mon 3 rd Nov	11.00–20.00
Tues 4 th Nov	11.00–18.30
Wed 5 th Nov	11.00–18.30

TALK

Heritage in Contemporary Dialogue:
Korean Ceramics and Asian Art,
guided tour by founders of Lloyd
Choi Gallery and Schoeni Projects

Tues 4th Nov

18.00–18.30

RSVP:

contact@lloydchoigallery.com

BUSINESS ADDRESS

162-57, Jungang-ro
Seonwon-myeon
Ganghwa-gun, Incheon
Republic of Korea

Eskenazi Ltd

3 | SEE MAP PAGE 77

10 Clifford Street
Mayfair
London W1S 2LJ

Daniel Eskenazi, Sarah Wong
+44 (0)20 7493 5464
gallery@eskenazi.co.uk
www.eskenazi.co.uk



EXHIBITION HOURS

Late Night Opening

Mon 3 rd Nov	17.00–20.00
Mon 27 th to Fri 31 st Oct	09.30–17.30
Sat 1 st Nov	10.00–17.00
Sun 2 nd Nov	10.00–17.00
Mon 3 rd Nov	09.30–20.00
Tues 4 th to Thurs 6 th Nov	09.30–17.30

EXHIBITIONS

1. Chinese ceramics, metalwork and lacquer from the 12th to the 14th century
2. Trees and mountains on gold and silver by Li Huayi

DESCRIPTIONS

1. Exhibition of Chinese ceramics, metalwork and lacquer from the 12th to the 14th century
2. New paintings by Li Huayi of trees and rocks on gold and silver leaf

ON VIEW

27th Oct–14th Nov

SPECIALISATION

Chinese ceramics, bronzes and works of art

Catalogue available

Michael Goedhuis and Tomasso

4 | SEE MAP PAGE 80

Tomasso / Michael Goedhuis

Tomasso +44 (0)20 7839 9394
Michael +44 (0)20 7823 1395

london@michaelgoedhuis.com / info@tomasso.art
michaelgoedhuis.com / tomasso.art

Marquis House
67 Jermyn Street
St James's
London SW1Y 6NY



EXHIBITION

Japanese Bronze Flower Vessels

DESCRIPTION

A collaboration between Michael Goedhuis and Tomasso presenting an exhibition of 12th to 19th century Japanese Bronze Flower Vessels illustrating their impact on European modernism

ON VIEW

28th Oct–6th Nov

SPECIALISATION

Michael Goedhuis specialises in Asian and Western contemporary art and antique Asian art. Tomasso specialises in European sculpture, Master paintings, Ancient art, along with a keen interest in Japanese art from the medieval to the Edo period

EXHIBITION HOURS

Late Night Opening

Sun 2 nd Nov	17.00–20.00
Tues 28 th to Fri 31 st Oct	11.00–17.00
Sat 1 st Nov	12.00–17.00
Sun 2 nd Nov	17.00–20.00
Mon 3 rd to Thurs 6 th Nov	11.00–17.00

Catalogue available

Francesca Galloway

5

No 10
56 Holland Park
London W11 3RS

Francesca Galloway, Thea Buen
+44 (0)20 7499 6844
thea@francescagalloway.com
www.francescagalloway.com



EXHIBITION HOURS

By appointment only
closed Saturday and Sunday

EXHIBITION

RARE – Indian Art for Court and Trade

DESCRIPTION

This exhibition encompasses Indian art for court and export and includes a rare folio from the St Petersburg Album, Hindu paintings from the 16th-19th century, important Company School works and a chintz palampore in pristine condition

ON VIEW

By appointment only

SPECIALISATION

Indian painting and courtly arts

Hanga Ten

6 | SEE MAP PAGES 77-79

Chiko Nara
+44 (0)7788 458 201
japaneseprints@hangaten.com
www.hangaten.com

St. George Street Gallery
Ground Floor, Sotheby's
34-35 New Bond St
London W1A 2AA



EXHIBITION

From Late Showa to Reiwa: The Evolution of Japanese Prints

DESCRIPTION

A selection of treasured Japanese prints from the 1960s to the present showing evolving printmaking techniques and featuring artists including Tadashi Nakayama, Clifton Karhu, Iwao Akiyama, Ray Morimura, Nana Shiomi, Sarah Brayer and Daniel Kelly

ON VIEW

1st–5th Nov

SPECIALISATION

Contemporary Japanese Prints and Paintings

EXHIBITION HOURS

Late Night Opening

Mon 3 rd Nov	17.00–20.00
Sat 1 st Nov	12.00–17.00
Sun 2 nd Nov	12.00–17.00
Mon 3 rd Nov	11.00–20.00
Tues 4 th Nov	11.00–18.30
Wed 5 th Nov	11.00–18.30

BUSINESS ADDRESS

By appointment only
PO Box 67812
London SW7 9BL

Japan Print Gallery

7 | SEE MAP PAGES 77-79

St. George Street Gallery
Ground Floor, Sotheby's
34-35 New Bond St
London W1A 2AA

Fraser Murray-Clarke
+44 (0)20 7221 0927
info@japaneseprints.net
www.japaneseprints.net



EXHIBITION HOURS

Late Night Opening

Mon 3 rd Nov	17.00–20.00
Sat 1 st Nov	12.00–17.00
Sun 2 nd Nov	12.00–17.00
Mon 3 rd Nov	11.00–20.00
Tues 4 th Nov	11.00–18.30
Wed 5 th Nov	11.00–18.30

EXHIBITION

Ukiyo-e - Japanese Woodblock Prints

DESCRIPTION

With a selection of landscape, beauty, and historical prints by artists such as Hiroshige, Yoshitoshi, and Hiroshi Yoshida, this exhibition aims to showcase the variety of subjects and styles encompassed by Ukiyo-e

ON VIEW

1st–5th Nov

SPECIALISATION

Japanese woodblock prints from the 18th Century to the 20th Century

BUSINESS ADDRESS

By appointment only
10 Lorn Road
SW9 0AD

Lam & Co UK

8

Lam

Non-Exhibiting Participant

gallery@lamcouk.com
gallery@antiquities.com
www.lamcouk.com



EXHIBITION

Earth and Spirit - Timeless Beauty

ON VIEW

By appointment only

SPECIALISATION

Chinese Art

EXHIBITION HOURS

Online and by appointment only

Marchant

9 | SEE MAP PAGE 76

120 Kensington Church Street
London W8 4BH

Samuel Marchant, Stuart Marchant
Natalie Marchant, Richard Marchant

+44 (0)20 7229 5319 / +44 (0)20 7229 3770

gallery@marchantasianart.com
www.marchantasianart.com



EXHIBITION HOURS

Late Night Opening

Sat 1 st Nov	17.00–20.00
Mon 27 th to Fri 31 st Oct	10.30–17.30
Sat 1 st Nov	11.00–20.00
Sun 2 nd Nov	By appointment
Mon 3 rd to Thurs 6 th Nov	10.30–17.30

TALKS

Centenary Exhibition Highlights
and Marchant One Hundred Years

Book Launch

Sat 1st Nov
17.00

RSVP:
gallery@marchantasianart.com

Catalogue available

Susan Page

10 | SEE MAP PAGES 77-79

Susan Page

+44 (0)20 3036 0044
+44 (0)7721 747 153

susan@snuffbottlepages.com
snuffbottlepages.com

Conduit Street Gallery
Ground Floor, Sotheby's
34-35 New Bond St
London W1A 2AA



EXHIBITION

Treasured Keepsakes

DESCRIPTION

A Selection of Chinese Snuff Bottles
from the 18th and 19th centuries

ON VIEW

1st–5th Nov

SPECIALISATION

Chinese Snuff Bottles

BUSINESS ADDRESS

Green Park House
15 Stratton Street
London W1J 8LQ

EXHIBITION HOURS

Late Night Opening

Mon 3 rd Nov	17.00–20.00
Sat 1 st Nov	12.00–17.00
Sun 2 nd Nov	12.00–17.00
Mon 3 rd Nov	11.00–20.00
Tues 4 th Nov	11.00–18.30
Wed 5 th Nov	11.00–18.30

TALK

Snuff Bottles in the Qing Dynasty

Tues 4th Nov

17.00

RSVP: susan@snuffbottlepages

Catalogue available

Atelier Pichvai Tradition & Beyond

11

Non-Exhibiting Participant

Pooja Singhal
+91-9810030913
pooja@pichvai.co.in/ptb@pichvai.co.in
www.pichwaitraditionandbeyond.com



EXHIBITION
Divine Intervention

DESCRIPTION
A new interpretation and take on the Pichvais juxtaposed with miniature schools

ON VIEW
Online

SPECIALISATION
Revival of Pichvai and Miniature schools from Rajasthan made by a collective of traditional artists

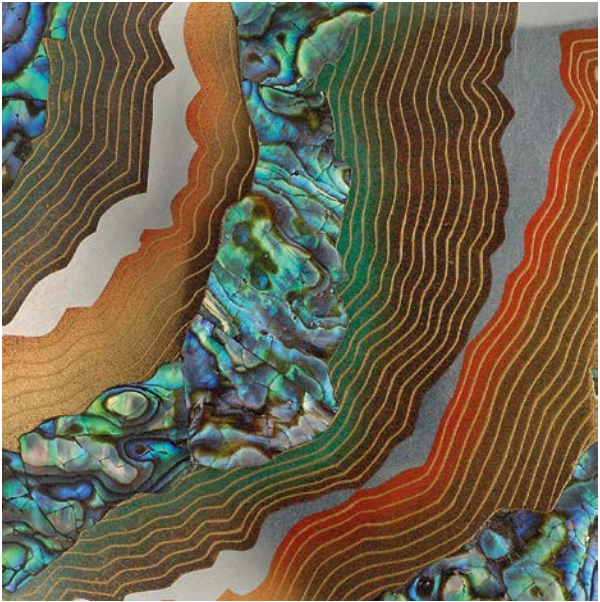
BUSINESS ADDRESS
164-A, Jor Bagh
Lodhi Road
New Delhi - 110003

Simon Pilling

12 | SEE MAP PAGES 77-79

Simon Pilling
+44 (0)7946 577 303
simon@simonpilling.co.uk
www.simonpilling.co.uk

St. George Street Gallery
Ground Floor, Sotheby's
34-35 New Bond St
London W1A 2AA



EXHIBITION
20th Anniversary:
the magic of lacquer

DESCRIPTION
Celebrating 20 years of study and presentation of Japan's lacquer art as it has developed since Japan opened to the modern world, displaying clear artistic continuity alongside striking innovation

ON VIEW
1st–5th Nov

SPECIALISATION
The arts of Japan, focussing on 20th century & contemporary work, with a specialisation in fine lacquer pieces

BUSINESS ADDRESS
PO Box 834, Rickmansworth
WD3 0RA

EXHIBITION HOURS
Late Night Opening
Mon 3rd Nov 17.00–20.00
Sat 1st Nov 12.00–17.00
Sun 2nd Nov 12.00–17.00
Mon 3rd Nov 11.00–20.00
Tues 4th Nov 11.00–18.30
Wed 5th Nov 11.00–18.30

TALK
My passion for urushi
Tues 4th Nov
12.00
RSVP: simon@simonpilling.co.uk

Schoeni Projects

13 | SEE MAP PAGES 77-79

Conduit Street Gallery
Ground Floor, Sotheby's
34-35 New Bond St
London W1A 2AA

Nicole Schoeni / Angel Hui
+44 (0)7510 189 250
info@schoeniprojects.com
www.schoeniprojects.com



EXHIBITION HOURS

Late Night Opening

Mon 3 rd Nov	17.00–20.00
Sat 1 st Nov	12.00–17.00
Sun 2 nd Nov	12.00–17.00
Mon 3 rd Nov	11.00–20.00
Tues 4 th Nov	11.00–18.30
Wed 5 th Nov	11.00–18.30

TALK

**Heritage in Contemporary
Dialogue: Korean Ceramics and
Asian Art, guided tour by founders
of Lloyd Choi Gallery and Schoeni
Projects**
Tues 4th Nov
18.00–18.30
RSVP: info@schoeniprojects.com

EXHIBITION

**spi: Heritage as a Living
Dialogue**

DESCRIPTION

As an extension of Schoeni Projects' artistic vision, Schoeni Projects Interiors (spi) presents a curated dialogue between antiques and contemporary artworks, exploring how aesthetic values - anchored in craftsmanship, materiality, and cultural symbolism - endure and evolve across time

ON VIEW

1st–5th Nov

SPECIALISATION

Schoeni Projects is a platform for cross-disciplinary art initiatives, dedicated to celebrating heritage, fostering dialogue, and cultivating collaborative practice

Anastasia von Seibold Japanese Art

14 | SEE MAP PAGES 77-79

Anastasia von Seibold
+44 (0)7966 255 250
anastasia@avsjapaneseart.com
www.avsjapaneseart.com

Conduit Street Gallery
Ground Floor, Sotheby's
34-35 New Bond St
London W1A 2AA



EXHIBITION

**Edo to Showa: Fine 18th – 20th
Century Japanese Prints**

DESCRIPTION

A selection of fine Japanese woodblock prints from the Edo period (18th and 19th centuries) including work by Suzuki Harunobu, Utagawa Hiroshige, Tsukioka Yoshitoshi. Also Shin-hanga from the Meiji – Showa periods (early – mid 20th century) by artists including Kawase Hasui, Ito Shinsui, Elizabeth Keith and Charles Bartlett

ON VIEW

1st–5th Nov

EXHIBITION HOURS

Late Night Opening

Mon 3 rd Nov	17.00–20.00
Sat 1 st Nov	12.00–17.00
Sun 2 nd Nov	12.00–17.00
Mon 3 rd Nov	11.00–20.00
Tues 4 th Nov	11.00–18.30
Wed 5 th Nov	11.00–18.30

SPECIALISATION

Japanese art, with a focus on 18th– 20th century woodblock prints. Also fine lacquer, folding screens and contemporary Japanese art

BUSINESS ADDRESS

4 Cromwell Place
London SW7 2JE

Jacqueline Simcox Ltd

15 | SEE MAP PAGES 77-79

St. George Street Gallery
Ground Floor, Sotheby's
34-35 New Bond St
London W1A 2AA

Jacqueline Simcox
+44 (0)7775 566 388
js@jacquelinesimcox.com
www.jacquelinesimcox.com



EXHIBITION HOURS
Late Night Opening
Mon 3rd Nov 17.00–20.00

Sat 1st Nov 12.00–17.00
Sun 2nd Nov 12.00–17.00
Mon 3rd Nov 11.00–20.00
Tues 4th Nov 11.00–18.30
Wed 5th Nov 11.00–18.30

TALK
A study of the exhibition textiles
Tues 4th Nov
11.30
RSVP: js@jacquelinesimcox.com

EXHIBITION
Chinese Textiles

DESCRIPTION
An exhibition of Ming and Qing textiles, including Buddhist silk appliqués

ON VIEW
1st–5th Nov

SPECIALISATION
Chinese and Central Asian silk textiles and costumes

BUSINESS ADDRESS
By appointment only
54 Linton Street
Islington
London N1 7AS

Slaats Fine Art

16 | SEE MAP PAGES 77-79

Mark Slaats
+44 (0)19292 934378
+44 (0)7717 825 828
info@slaatsfineart.com
www.slaatsfineart.com

St. George Street Gallery
Ground Floor, Sotheby's
34-35 New Bond St
London W1A 2AA



EXHIBITION
Ancient Echoes, New Perspectives

DESCRIPTION
From timeless archaic vessels and scholar's objects to the modern ink paintings of T'ang Haywen and plique-à-jour enamels of Yinglong Li, this exhibition bridges centuries of Chinese art in a vivid dialogue between tradition and innovation

ON VIEW
1st–5th Nov

SPECIALISATION
Chinese Ceramics & Works of Art; Modern & Contemporary Art

BUSINESS ADDRESS
United Kingdom
323 High Street, Epping CM16 4BZ
The Netherlands
Maliebaan 12, 3581 CN Utrecht

EXHIBITION HOURS
Late Night Opening
Mon 3rd Nov 17.00–20.00

Sat 1st Nov 12.00–17.00
Sun 2nd Nov 12.00–17.00
Mon 3rd Nov 11.00–20.00
Tues 4th Nov 11.00–18.30
Wed 5th Nov 11.00–18.30

TALK
Painting with Light: Yinglong Li and the Beauty of Plique-à-Jour Enamels
Tues 4th Nov
13.00
RSVP: info@slaatsfineart.com

Thang Long Art Gallery

17 | SEE MAP PAGES 77-79

Conduit Street Gallery
Ground Floor, Sotheby's
34-35 New Bond St
London W1A 2AA

Long Nguyen
+44 (0)7897 932 865
info@thanglongartgallery.com
www.thanglongartgallery.com



EXHIBITION HOURS

Late Night Opening

Mon 3 rd Nov	17.00–20.00
Sat 1 st Nov	12.00–17.00
Sun 2 nd Nov	12.00–17.00
Mon 3 rd Nov	11.00–20.00
Tues 4 th Nov	11.00–18.30
Wed 5 th Nov	11.00–18.30

TALK

Vietnam – Enchanting Beauty

Tues 4th Nov

17.30

RSVP:

info@thanglongartgallery.com

BUSINESS ADDRESS

41 Hang Gai Street
Hoan Kiem District
Old Quarters, Hanoi, Vietnam

Catalogue available

EXHIBITION

Vietnam – Enchanting Beauty

DESCRIPTION

The exhibition showcases exquisite works from notable Vietnamese contemporary artists, including Hong Viet Dung (1962) from the renowned Gang of Five. Each artist with their unique style and technique, unveils a distinct perspective that reflects their deep appreciation for the enchanting beauty of Vietnam

ON VIEW

1st–5th Nov

SPECIALISATION

Vietnamese Contemporary art from the post-French-colonial era (1954) onwards

Amir Mohtashemi Ltd

25 | SEE MAP PAGE 80

Amir Mohtashemi
+44 (0)20 4572 6886
info@mohtashemi.art
www.mohtashemi.art

17 Ryder Street
St James's
London SW1Y 6PY



ON VIEW

27th Oct–6th Nov

SPECIALISATION

Indian, Islamic and Cross Cultural

EXHIBITION HOURS

Late Night Opening

Sun 2 nd Nov	17.00–20.00
Mon 27 th to	
Fri 31 st Oct	10.00–18.00
Sat 1 st Nov	closed
Sun 2 nd Nov	17.00–20.00
Mon 3 rd to	
Thurs 6 th Nov	10.00–18.00

TALK

The Influence of Chinese Art on Ottoman Pottery

Tues 4th Nov

16.00

RSVP: admin@mohtashemi.art

Non-Exhibiting Participants

Rob Dean Art

Modern and Classical Indian Art
Bury St. Edmunds
rob@robdeanart.com
www.robdeanart.com
+91 9920028418
+44 (0)7764 942 306

Lam & Co Antiquities

Early Ceramic, Ancient Bronze, Early Buddhist Sculpture
2/F 151 Hollywood Road
Central, Hong Kong
chrisantiquities@gmail.com
www.lamcoantiquities.com
+852 25438877

Lam's Gallery

Chinese Art & Antiques
3C Yally Industrial Building
6 Yip Fat Street, Wong Chuk Hang
Hong Kong
info@lams-gallery.com
www.lams-gallery.com
+852 94740066

Runjeet Singh Limited

Asian Arms, Armour, Works of Art and Contemporary Art
PO Box 6778
Royal Leamington Spa
Warwickshire CV31 9PZ
info@runjeetsingh.com
www.runjeetsingh.com
+44 (0)7866 424 803



Participants

AUCTION HOUSES

Auction Houses		Speciality											
18	Bonhams Knightsbridge			S	H	C	J	K	E				
19	Bonhams	Mi	I	S	H	C	J	K	E	Co	V	M	
20	Christie's	Mi				C							
21	Dore & Rees					C	J						
22	Lyon & Turnbull	Mi	I	S	H	C	J	K	E	Co	V	M	
23	Roseberys	Mi	I	S	H	C	J	K	E	Co	V	M	
24	Sotheby's	Mi	I	S	H	C		K	E	Co	V	M	

- Mi
- Islamic & Middle Eastern Art
- I
- Indian Art
- S
- Southeast Asian Art
- H
- Himalayan & Central Asian Art
- C
- Chinese Art
- J
- Japanese Art
- K
- Korean Art
- E
- Export Art
- Co
- Contemporary Art
- V
- Vietnamese Art
- M
- Modern Art

Bonhams Knightsbridge

18 | SEE MAP PAGE 81

Montpelier Street
Knightsbridge
London SW7 1HH



+44 (0)20 7393 3900
www.bonhams.com



AUCTION
Asian Art I (Live sale)*

Mon 3rd Nov 10.00

Asian Art II (Live sale)*

Tues 4th Nov 10.00

AUCTION
Collector's Treasures:
Asian Art Online

Mon 3rd to
Tues 11th Nov 10.00

SPECIALISATION
Chinese, Japanese, Southeast
Asian, Himalayan and Central Asian,
Korean, Export Art

Rachel Hyman
+44 (0)20 7393 3854
rachel.hyman@bonhams.com

Lazarus Halstead
+44 (0)20 3988 6385
lazarus.halstead@bonhams.com

VIEWING FOR AUCTIONS ABOVE

Fri 31st Oct 09.00–17.00
Sat 1st Nov 11.00–17.00
Sun 2nd Nov 11.00–17.00
Mon 3rd Nov 09.00–17.00
(Asian Art II only)

*Catalogue available

Please note: all sale times and
viewing times should be confirmed

Bonhams

19 | SEE MAP PAGE 77

101 New Bond Street
London W1S 1SR
+44 (0)20 7468 8248
www.bonhams.com



SPECIALISATION

Chinese Art, Japanese Art, Asian Art, Indian and Islamic Art, Modern and Contemporary South Asian Art

Chinese Art Department
Asaph Hyman
+44 (0)20 7468 5888
asaph.hyman@bonhams.com

Indian and Islamic Art
Oliver White
+44 (0)20 7468 8303
oliver.white@bonhams.com

AUCTION

The Marsh Collection: Art for the Literati (Part IV)*

Thurs 6th Nov 10.00

AUCTION

Priestley & Ferraro: Three Decades in Chinese Art (1994-2025)*

Thurs 6th Nov 11.00

AUCTION

Fine Chinese Art*

Thurs 6th Nov 14.30

AUCTION

Priestley & Ferraro: Three Decades in Chinese Art (1994-2025), Online

Opening:
Wed 29th Oct 12.00
Closing:
Fri 7th Nov 12.00

EVENING OPENING

Mon 3rd Nov 17.00–20.00

AUCTION

A Life in Ceramics: The Peter and Mary White Collection of Chinese Art, Online

Opening:
Fri 31st Oct 10.00
Closing:
Mon 10th Nov 10.00

AUCTION

China Observed Through Western Artists' Eyes from Martyn Gregory, London Online

Opening:
Fri 31st Oct 10.00
Closing:
Mon 10th Nov 11.00

AUCTION

Beauties, Beasts and Blossoms: An Important London Private Collection of Japanese Paintings, Online

Opening:
Mon 3rd Nov 10.00
Closing:
Tues 11th Nov 12.00

EXHIBITION

Painting the Dao: The Master of the Water, Pine and Stone Retreat*

The artist Hugh Moss will be giving a talk about his exhibition at 11.00 daily during viewing hours

VIEWINGS FOR THE ABOVE

Sun 2nd Nov 11.00–17.00
Mon 3rd Nov 09.00–16.30
(Partial viewing 16.30–19.00)
Tues 4th Nov 09.00–18.00
Wed 5th Nov 09.00–16.30

AUCTION

Islamic and Indian Art*

Wed 12th Nov 11.00

VIEWING

Sun 9th Nov 11.00–15.00
Mon 10th Nov 09.00–17.00
Tues 11th Nov 09.00–17.00

AUCTION

Islamic and Indian Art

Online only
Opening:
Mon 1st Dec 12.00
Closing:
Tues 9th Dec 12.00

VIEWING

By appointment

TALKS

Brushes with the China Trade, a guided tour with Dr Patrick Conner
Sun 2nd Nov
15.00

Through the Lens of the Marsh and White Collections: A Journey Through Themes, a lecture by Dr Edward Luper
Sun 2nd Nov
16.00

From the Authentic to the Copy: Understanding the Role of Mingqi in Ancient Chinese Funerary Art, a lecture by Dr Arnaud Bertrand, Curator at the Guimet, Paris
Mon 3rd Nov
17.00

Book signing: 'Later Chinese Bronzes for the Scholar's Studio', with Paul Bromberg
Mon 3rd Nov
18.00

Marking 30 Years of Priestley & Ferraro Chinese Art: Imperial Lacquer and Cloisonné of the 14th and early 15th Centuries
Tues 4th Nov
16.30

RSVP:
juliette.hammer@bonhams.com

*Catalogue available

Please note: all sale times and viewing times should be confirmed

*Catalogue available

Please note: all sale times and viewing times should be confirmed

Christie's

20 | SEE MAP PAGE 80

8 King Street
St James's
London SW1Y 6QT
+44 (0)20 7839 9060
www.christies.com



SPECIALISATION

Founded in 1766 by James Christie, the auction house holds sales for Indian & Islamic art, Rugs and Carpets, Himalayan and Southeast Asian art, Chinese and Japanese Ceramics and Works of Art, Middle Eastern Modern and Contemporary Art

Islamic & Indian Art
Sara Plumbly
+44 (0)20 7389 2374
splumbly@christies.com

Chinese Works of Art
Kate Hunt
+44 (0)20 7752 3389
khunt@christies.com

AUCTION

Exceptional Paintings from the Personal Collection of Prince & Princess Sadruddin Aga Khan*

Tues 28th Oct 11.00

LONDON VIEWING

Fri 24th Oct 09.00–17.00
Sat 25th Oct 12.00–17.00
Sun 26th Oct 12.00–17.00
Mon 27th Oct 09.00–17.00

AUCTION

Arts of the Islamic and Indian Worlds including Rugs and Carpets*

Thurs 30th Oct 10.30

LONDON VIEWING

Fri 24th Oct 09.00–17.00
Sat 25th Oct 12.00–17.00
Sun 26th Oct 12.00–17.00
Mon 27th Oct 09.00–17.00
Tues 28th Oct 09.00–20.00
Wed 29th Oct 09.00–17.00

AUCTION

Modern and Contemporary Middle Eastern Art LIVE An accompanying online sale*

Thurs 6th Nov 10.00 (live)
Mon 28th Oct to
Mon 11th Nov 14.00 (online)

LONDON VIEWING

Sat 1st Nov 12.00–17.00
Sun 2nd Nov 12.00–17.00
Mon 3rd to
Wed 5th Nov 09.00–17.00

NON-SELLING EXHIBITION

Highlights from the Woolf Collection of Chinese Jades
30th Oct - 11th Nov
(not open 8th and 9th Nov)

LONDON VIEWING

Fri 31st Oct 09.00–17.00
Sat 1st Nov 12.00–17.00
Sun 2nd Nov 12.00–20.00
Mon 3rd Nov 09.00–17.00
Tues 4th Nov 09.00–20.00
Wed 5th to
Fri 7th Nov 09.00–17.00
Mon 10th Nov 09.00–17.00
Tues 11th Nov 09.00–17.00

EVENING VIEWINGS

Tues 28th Oct 17.00–20.00
Sun 2nd Nov 17.00–20.00
Tues 4th Nov 17.00–20.00

AUCTION

Art of Asia including the Palmer Family Collection (online)

30th Oct–12th Nov

AUCTION

Art d'Asie, Paris

Wed 10th Dec 10.30 (CET)

LONDON VIEWING FOR THE ABOVE

including highlights exhibition for Art d'Asie

Fri 31st Oct 09.00–17.00
Sat 1st Nov 12.00–17.00
Sun 2nd Nov 12.00–20.00
Mon 3rd Nov 09.00–17.00
Tues 4th Nov 09.00–20.00
Wed 5th to
Fri 7th Nov 09.00–17.00
Mon 10th Nov 09.00–17.00
Tues 11th Nov 09.00–17.00

TALKS

Lecture to accompany the book launch of:

The Significance of Jade in China's Culture, History and Art, as illustrated by works in the Woolf Collection of Chinese Jades

Limited edition: books available to pre-order
Sun 2nd Nov
17.30–18.00 (tea & coffee)
18.00–19.00 (lecture)
RSVP: lguanodent@christies.com

The OCS Annual Lecture: Findings and Research in the Jingdezhen Luomaqiao Kiln Site - Blue and White Porcelain Production over 700 Years
Speaker: Dr Weng Yanjun

Tues 4th Nov
17.30–18.00 (tea & coffee)
18.00–19.00 (lecture)
RSVP: lguanodent@christies.com

*Online catalogue available

Please note: all sale times and viewing times should be confirmed

Dore & Rees

21 | SEE MAP PAGE 82

Asia House, 63 New Cavendish St
London W1G 7LP
+44 (0)1373 462 257
www.doreandrees.com



SPECIALISATION

Chinese and Japanese Art
Southeast Asian Art

Fine Asian Art
Lee Young
+44 (0)1373 462 257
+44 (0)7825 426 555
lee.young@doreandrees.com

BUSINESS ADDRESS

Auction Salerooms
Vicarage Street
Frome, Somerset
BA11 1PU

AUCTION

Fine Asian Art
Mon 10th Nov 10.30

AUCTION

**The Eva & Aubrey Sweet
Collection – Part II: Japanese
Lacquer and Works of Art**
Tues 11th Nov 09.30

Catalogue available

Please note: all sale times and
viewing times should be confirmed

AUCTION

**The Alan Bostock Collection –
Part II: Japanese Cloisonné and
Works of Art**
Tues 11th Nov 12.30

AUCTION

**The Mike Noel Collection
Japanese Swords and Accessories**
Tues 11th Nov 15.00

VIEWINGS FOR ALL AUCTIONS:
LONDON

Sun 2nd Nov 12.00–17.00
Mon 3rd Nov 10.00–17.00

SOMERSET

Fri 7th to
Sun 9th Nov 10.00–16.00

TALKS

**Highlights from The Eva & Aubrey
Sweet Collection with Rosemary
Bandini**
Mon 3rd Nov 15.00–16.00
RSVP: lynn.strover@doreandrees.com

**Conserving and Restoring Historical
Ceramic Artefacts with Jeff Smith
and Duncan Gates from Antique
Conservation Ltd.**

Mon 3rd Nov 14.00–14.45
RSVP: lynn.strover@doreandrees.com

Lyon & Turnbull

22 | SEE MAP PAGE 82

22 Connaught Street
London W2 2AF
+44 (0)20 7930 9115
www.lyonandturnbull.com



AUCTION

Fine Asian Works of Art
Fri 7th Nov 10.00

VIEWING

Sun 2nd Nov 10.00–17.00
Mon 3rd Nov 10.00–20.00
Tues 4th to
Thurs 6th Nov 10.00–17.00

EVENING VIEWING

Mon 3rd Nov 17.00–20.00

SPECIALISATION

Established in Edinburgh in 1826,
Lyon & Turnbull is Scotland's oldest
firm of auctioneers holding regular
sales of Asian art, notably Chinese

Asian Art
Grace Tu
+44 (0)20 7930 9115
grace.tu@lyonandturnbull.com

Please note: all sale times and
viewing times should be confirmed

Roseberys

23 | SEE MAP PAGES 80, 81 & 83

70–76 Knight’s Hill

London SE27 0JD

+44 (0)20 8761 2522

www.roseberys.co.uk



SPECIALISATION

Antiquities, Chinese Art, Islamic Art, Indian Art, Japanese Art, Himalayan Art, Vietnamese Art, Korean Art, Export Art, Modern and Contemporary Middle East and Indian Art

Chinese, Japanese and

South East Asian Art

Bill Forrest

+44 (0)20 8761 2522

+44 (0)7912 719 214

billforrest@roseberys.co.uk

Antiquities, Islamic and Indian Arts

Alice Bailey

+44 (0)20 8761 2522

alicebailey@roseberys.co.uk

Please note: all sale times and viewing times should be confirmed

AUCTION

Modern and Contemporary
Middle East and South Asian
Art

Fri 24th Oct 10.00

AUCTION

Antiquities, Islamic and Indian
Arts

Fri 31st Oct 10.00

VIEWING FOR BOTH AUCTIONS
AT KNIGHT’S HILL

Mon 20th to

Fri 24th Oct 09.30–17.00

Sun 26th Oct 10.00–16.00

Mon 27th to

Thurs 30th Oct 09.30–17.00

VIEWING FOR BOTH AUCTIONS
4 CROMWELL PLACE
LONDON SW7 2JE

Wed 22nd Oct 12.00–17.00

Thurs 23rd Oct 10.00–17.00

AUCTION

1000 Years of 100 Boys in
Chinese Art: The Feng-Chun
Ma Collection

Tues 4th Nov 10.00

AUCTION

Chinese, Japanese & South
East Asian Works of Art

Tues 4th Nov 12.00

Wed 5th Nov 10.00

VIEWING FOR BOTH AUCTIONS
AT KNIGHT’S HILL

Mon 27th to

Fri 31st Oct 09.30–17.00

Mon 3rd Nov 09.30–17.00

VIEWING FOR BOTH AUCTIONS
AT BOWMAN SCULPTURE
6 DUKE STREET, ST JAMES’S
LONDON SW1Y 6BN

Sat 1st Nov 12.00–17.00

Sun 2nd Nov 10.00–20.00

EVENING VIEWING

Asian Art Department

Sun 2nd Nov 17.00–20.00

Bowman Sculpture, 6 Duke Street,
St James’s, London, SW1Y 6BN

TALK AT KNIGHT’S HILL

Feng-Chun Ma Presents Her
Collection Celebrating 1000 Years
of 100 Boys in Chinese Art, at a
Winding Stream Party

Thurs 30th Oct

18.00

RSVP: asian@roseberys.co.uk

Please note: all sale times and viewing times should be confirmed

Sotheby's

24 | SEE MAP PAGE 77

34–35 New Bond Street
London W1A 2AA
+44 (0)20 7293 5000
www.sothebys.com



Chinese and Himalayan
Works of Art
Julian King
+44 (0)20 7293 5090
julian.king@sothebys.com

Islamic and Indian Art
Frankie Keyworth
+44 (0)20 7293 5294
frankie.keyworth@sothebys.com

Modern and Contemporary South
Asian Art
Louise Lebrun
+44 (0)20 7293 5755
louise.lebrun@sothebys.com

SPECIALISATION
Founded in 1744, Sotheby's holds
auctions of important collections
and examples of Chinese,
Himalayan, Islamic and Indian &
South Asian art in London

AUCTION
**Arts of the Islamic World &
India***
Wed 29th Oct 10.30

VIEWING
Fri 24th Oct 09.00–16.30
Sat 25th Oct 12.00–17.00
Sun 26th Oct 13.00–17.00
Mon 27th Oct 09.00–16.30
Tues 28th Oct 09.00–16.30

AUCTION
Chinese Art*
Wed 5th Nov 10.30 and 14.30

VIEWING
Sat 1st Nov 12.00–17.00
Sun 2nd Nov 12.00–17.00
Mon 3rd Nov 09.00–20.00
Tues 4th Nov 09.00–16.30

AUCTION
Asia / 5000 Years (online)
Thurs 30th Oct 12.00
to Fri 7th Nov 12.00

VIEWING
Sat 1st Nov 12.00–17.00
Sun 2nd Nov 12.00–17.00
Mon 3rd Nov 09.00–20.00
Tues 4th to
Thurs 6th Nov 09.00–16.30

EVENING VIEWING
Mon 3rd Nov 17.00–20.00

TALK
**Sir James Stewart Lockhart –
Collector and Scholar**
Speaker: Lisa Kerr
Sun 2nd Nov
15.00
RSVP: Julian.King@sothebys.com

*Catalogue available

Please note: all sale times and
viewing times should be confirmed

Tuesday 24th October

ROSEBERYS

10.00 Modern and Contemporary Middle East and South Asian Art

Tuesday 28th October

CHRISTIE'S

11.30 Exceptional Paintings from the Personal Collection of Prince & Princess Sadruddin Aga Khan

Tuesday 28th October to Tuesday 11th November

CHRISTIE'S

14.00 Arts of the Islamic and Indian Worlds including Rugs and Carpets, Online

Wednesday 29th October

SOTHEBY'S

10.30 Arts of the Islamic World & India

Wednesday 29th October to Friday 7th November

BONHAMS

12.00 Priestley & Ferraro: Three Decades in Chinese Art (1994-2025), Online

Thursday 30th October

CHRISTIE'S

10.30 Arts of the Islamic and Indian Worlds including Rugs and Carpets

Thursday 30th October to Friday 7th November

SOTHEBY'S

12.00 Asia/5000 Years, Online

Thursday 30th October to Wednesday 12th November

CHRISTIE'S

10.00 Art of Asia including the Palmer Family Collection, Online

Friday 31st October

ROSEBERYS

10.00 Antiquities, Islamic and Indian Arts

Friday 31st October to Monday 10th November

BONHAMS

10.00 A Life in Ceramics: The Peter and Mary White Collection of Chinese Art, Online

BONHAMS

10.00 China Observed Through Western Artists' Eyes from Martyn Gregory, London, Online

Monday 3rd November

BONHAMS KNIGHTSBRIDGE

10.00 Asian Art I

Monday 3rd to Tuesday 11th November

BONHAMS KNIGHTSBRIDGE

10.00 Collector's Treasures Asian Art, Online

BONHAMS

10.00 Beauties, Beasts and Blossoms: An Important London Private Collection of Japanese Paintings, Online

Tuesday 4th November

BONHAMS KNIGHTSBRIDGE

10.00 Asian Art II

ROSEBERYS

10.00 1000 Years of 100 Boys in Chinese Art: The Feng-Chun Ma Collection

ROSEBERYS

12.00 Chinese, Japanese & South East Asian Works of Art

continued overleaf

Wednesday 5th November

ROSEBERYS

10.00 Chinese, Japanese & South East Asian Works of Art

SOTHEBY'S

10.30 Chinese Art

14.30 Chinese Art

Thursday 6th November

BONHAMS

10.00 The Marsh Collection: Art for the Literati (Part IV)

CHRISTIE'S

10.00 Modern and Contemporary Middle Eastern Art

BONHAMS

11.00 Priestley & Ferraro: Three Decades in Chinese Art (1994-2025)

BONHAMS

14.30 Fine Chinese Art

Friday 7th November

LYON & TURNBULL

10.00 Fine Asian Works of Art

Monday 10th November

DORE & REES

10.30 Fine Asian Art

Tuesday 11th November

DORE & REES

09.30 The Eva & Aubrey Sweet Collection – Part II: Japanese

DORE & REES

12.30 The Alan Bostock Collection – Part II: Japanese Cloisonne and Works of Art

DORE & REES

15.00 The Mike Noel Collection Japanese Swords and Accessories

Wednesday 12th November

BONHAMS

11.00 Islamic and Indian Art

Monday 1st to Tuesday 9th December

BONHAMS

12.00 Islamic and Indian Art, Online

Wednesday 10th December

CHRISTIE'S

10.30 (CET) Art d'Asie, Paris



Asian Collections,
Societies, etc

LONDON COLLECTIONS

The British Library

96 Euston Road
London NW1 2DB
+44 (0)843 2081144
www.bl.uk

The British Museum

Great Russell Street
London WC1B 3DG
+44 (0)20 7323 8000
www.britishmuseum.org

The Fan Museum

12 Crooms Hill
London SE10 8ER
+44 (0)20 8305 1441
www.thefanmuseum.org.uk
info@thefanmuseum.org.uk

Horniman Museum

100 London Road
Forest Hill
London SE23 3PQ
+44 (0)20 8699 1872
www.horniman.ac.uk
enquiry@horniman.ac.uk

**Museum of Croydon Riesco
Collection of Chinese Ceramics**

Croydon Clocktower
Katharine Street
Croydon CR9 1ET
+44 (0)20 8253 1022
www.museumofcroydon.com
museum@croydon.gov.uk

**National Maritime Museum
Greenwich**

London SE10 9NF
+44 (0)20 8858 4422
www.rmg.co.uk
bookings@rmg.co.uk

Royal Collection Trust

St James's Palace
St. James's
London SW1A 1BQ
+44 (0)30 3123 7300
www.rct.uk

Sir John Soane's Museum

13 Lincoln's Inn Fields
London WC2A 3BP
+44 (0)20 7405 2107
www.soane.org
admin@soane.org.uk

Victoria and Albert Museum

Cromwell Road
London SW7 2RL
+44 (0)20 7942 2000
www.vam.ac.uk

The Wallace Collection

Hertford House
Manchester Square
London W1U 3BN
+44 (0)20 7563 9500
www.wallacecollection.org
enquiries@wallacecollection.org

COLLECTIONS OUTSIDE LONDON

The Ashmolean Museum

Beaumont Street
Oxford OX1 2PH
+44 (0)1865 278 000
www.ashmolean.org
eastern-art@ashmus.ox.ac.uk

**The Barlow Collection of
Chinese Ceramics, Bronzes and
Jades**

The Ashmolean Museum
Beaumont Street
Oxford OX1 2PH
+44 (0)1865 278 000
www.ashmolean.org

COLLECTIONS OUTSIDE LONDON

**Birmingham Museum & Art
Gallery**

Chamberlain Square
Birmingham B3 3DH
+44 (0)121 348 8000
www.bmag.org.uk
hello@
birminghammuseums.org.uk

Bristol Museum and Art Gallery

Queen's Road
Bristol BS8 1RL
+44 (0)117 922 3571
www.bristolmuseums.org.
uk/bristol-museum-and-art-
gallery/
general.museum@bristol.gov.uk

The Burrell Collection

Pollok Country Park 2060
Pollokshaws Road
Glasgow G43 1AT
+44 (0)141 287 2550
burrellcollection.com/
museums@glasgowlife.org.uk

Compton Verney House Trust

Compton Verney
Warwickshire CV35 9HZ
+44 (0)1926 645 500
www.comptonverney.org.uk
info@comptonverney.org.uk

The Fitzwilliam Museum

Trumpington Street
Cambridge CB2 1RB
+44 (0)1223 332 900
www.fitzmuseum.cam.ac.uk
reception@
fitzmuseum.cam.ac.uk

**Maidstone Museum & Bently
Art Gallery**

St Faith's Street
Maidstone
Kent ME14 1LH
+44 (0)1622 602 838
www.museum.maidstone.gov.uk
museuminfo@maidstone.gov.uk

The Museum of East Asian Art

12 Bennett Street
Bath BA1 2QJ
+44 (0)1225 464 640
www.meaa.org.uk
info@meaa.org.uk

National Museum of Scotland

Chambers Street
Edinburgh EH1 1JF
+44 (0)300 123 6789
www.nms.ac.uk
info@nms.ac.uk

Oriental Museum

University of Durham
Elvet Hill, Off South Road
Durham DH1 3TH
+44 (0)191 334 5694
www.dur.ac.uk/oriental.museum
oriental.museum@durham.ac.uk

Pitt Rivers Museum

South Parks Road
Oxford OX1 3PP
+44 (0)1865 270 927
www.prm.ox.ac.uk
prm@prm.ox.ac.uk

**Russell-Cotes Art Gallery &
Museum**

Russell Cotes Road
Bournemouth BH1 3AA
+44 (0)1202 128000
russellcotes.com/
russellcotes@bcpcouncil.gov.uk

Sainsbury Centre for Visual Arts

University of East Anglia
Norwich NR4 7TJ
+44 (0)1603 593 199
www.sainsburycentre.ac.uk/

UCL Institute of Archaeology

31-34 Gordon Square, London
WC1H 0PY
+44 (0)20 7679 7495
www.ucl.ac.uk/archaeology/
ioa-reception@ucl.ac.uk

Winchester College Treasury

College Street
Winchester SO23 9NA
+44 (0)1962 814 638
www.winchestercollege.org/
welcome/archives-libraries-
treasury
treasury@wincoll.ac.uk

ASIAN SOCIETIES AND CULTURAL CENTRES

Society of Antiquaries of London

Burlington House
Piccadilly London W1J 0BE
+44 (0)20 7479 7080
www.sal.org.uk
admin@sal.org.uk

Asia House

63 New Cavendish Street
London W1G 7LP
+44 (0)20 7307 5454
www.asiahouse.org
enquiries@asiahouse.co.uk

**The Bhavan Centre UK
(Institute of Indian Art and Culture)**

4a Castletown Road
London W14 9HE
+44 (0)20 7381 3086
www.bhavan.net
info@bhavan.net

The British Library (Friends)

96 Euston Road
London NW1 2DB
+44 (0)20 7412 7734
www.support.bl.uk
supporters@bl.uk

British Museum (Friends)

The British Museum
Great Russell Street
London WC1B 3DG
+44 (0)20 7323 8299
www.britishmuseum.org
friends@britishmuseum.org

China Exchange

32a Gerrard Street
London W1D 6JA
+44 (0)20 7734 1931
www.chinaexchange.uk
info@chinaexchange.uk

Centre for Chinese Contemporary Art (CFCCA)

Market Buildings, 13
Thomas Street
Manchester M4 1EU
+44 (0)161 832 7271
www.cfcca.org.uk
hello@cfcca.org.uk

The Daiwa Anglo-Japanese Foundation

Japan House
13/14 Cornwall Terrace Mews
London NW1 4QP
+44 (0)20 7486 4348
www.dajf.org.uk
office@dajf.org.uk

Museum of East Asian Art (Friends)

12 Bennett Street
Bath BA1 2QJ
+44 (0)1225 464 640
www.maaa.org.uk
info@meaa.org.uk

The Great Britain-China Centre

15 Belgrave Square
London SW1X 8PS
+44 (0)20 7235 6696
www.gbccc.org.uk
contact@gbccc.org.uk

Indian Art Circle

SOAS, University of London
Thornhaugh Street
Russell Square
London WC1H 0XG
+44 (0)20 7637 2388
www.soas.ac.uk
indianartcircle.london@gmail.com

International Netsuke Society

European Chapter
PO Box 2281
Woodford Green
London IG7 5YP
www.netsuke.org/
mvargashandle@outlook.com

Iran Heritage Foundation

SOAS University of London
Thornhaugh Street
London WC1H 0XG
UK+44 (0)20 7493 4766
www.iranheritage.org/
info@iranheritage.org

The Iran Society

16 Old Queen Street
London SW1H 9HP
+44 (0)20 7235 5122
www.iransociety.org
info@iransociety.org

Islamic Art Circle (SOAS)

Brookfields, Swerford
Chipping Norton
Oxfordshire OX7 4BG
+44 (0)7714087480
rosalindhaddon@gmail.com

The Japan Society

13/14 Cornwall Terrace
London NW1 4QP
+44 (0)20 7935 0475
www.japansociety.org.uk
info@japansociety.org.uk

Korean Cultural Centre UK

Ground Floor, Grand Buildings
1-3 Strand
London WC2N 5BW
+44 (0)20 7004 2600
kccuk.org.uk/en/
info@kccuk.org.uk

The Nehru Centre

8 South Audley Street
London W1K 1HF
+44 (0) 2074 932 019
www.nehrucentre.org.uk

Oriental Ceramic Society

PO Box 77859
London SW20 2GB
+44 (0)7546 026 338
www.orientalceramicsociety.org.uk/
info@orientalceramicsociety.org.uk

Oriental Museum (Friends)

University of Durham
Elvet Hill, Durham DH1 3TH
+44 (0)191 334 5694
www.dur.ac.uk/oriental.museum/
whatson/events/friends/
fomdurham@fastmail.co.uk

Oriental Rug and Textile Society

Moon's End
Hook Norton
Oxfordshire OX15 5NQ
orientalrugandtextilesociety.org.uk
membership.orts@gmail.com

Royal Asiatic Society

14 Stephenson Way
London NW1 2HD
+44 (0)20 7388 4539
www.royalasiaticsociety.org
info@royalasiaticsociety.org

Royal Society for Asian Affairs

16 Old Queen Street
London SW1H 9HP
+44 (0)20 7235 5122
info@rsaa.org.uk
www.rsaa.org.uk
Library and archive accessible by prior appointment.

Sainsbury Institute for the Study of Japanese Arts and Cultures

64 The Close
Norwich NR1 4DH
+44 (0)1603 597507
www.sainsbury-institute.org
sisjac@sainsbury-institute.org

SOAS University of London

SOAS University of London
University of London
Thornhaugh Street
Russell Square
London WC1H 0XG
+44 (0)20 7637 2388
www.soas.ac.uk

SOAS-Alphawood Postgraduate Diploma in Asian Art

SOAS University of London
+44 (0)20 7898 4451
www.AsianArtDiploma.co.uk
asianart@soas.ac.uk

Victoria and Albert Museum (Friends)

Cromwell Road
London SW7 2RL
+44 (0)20 7942 2271
www.vam.ac.uk/membership
membership@vam.ac.uk

OTHER COLLECTIONS WHICH INCLUDE ASIAN ART

Ascott House

Estate Office, Wing
Near Leighton Buzzard
Bedfordshire LU7 0PR
+44 (0)1296 688 242
www.ascottestate.co.uk
info@ascottestate.co.uk

Chiddingstone Castle

Hill Hoath Road
Chiddingstone
Near Edenbridge
Kent TN8 7AD
+44 (0)1892 870 347
www.chiddingstonecastle.org.uk
hello@chiddingstonecastle.org.uk

Kedleston Hall

Quarndon
Derby
Derbyshire DE22 5JH
+44 (0)1332 842 191
www.nationaltrust.org.uk/kedleston-hall
kedlestonhall@nationaltrust.org.uk

Powis Castle

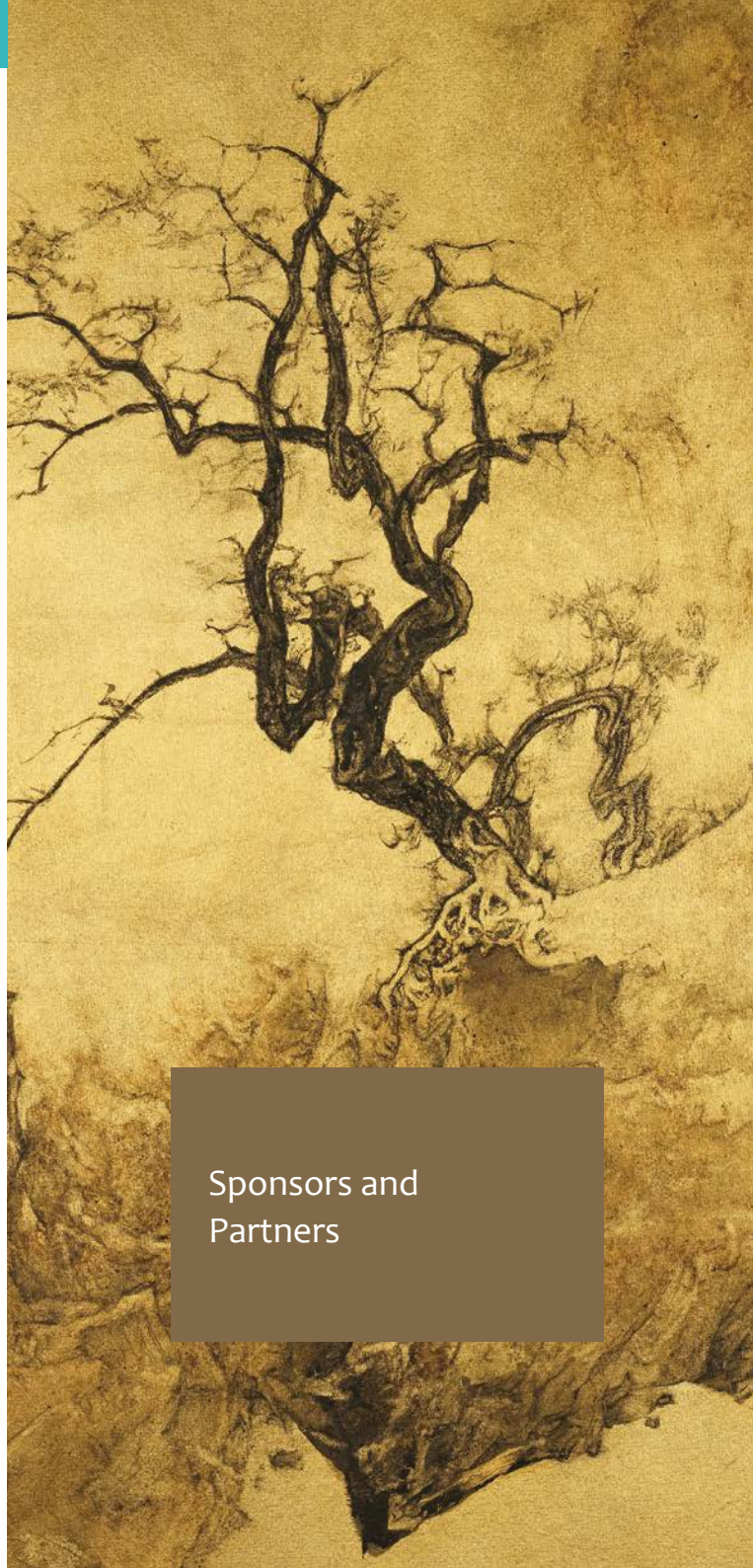
Welshpool
Powys
Wales SY21 8RF
+44 (0)1938 551 944
www.nationaltrust.org.uk/powis-castle
powiscastle@nationaltrust.org.uk

Sherborne Castle

New Road Sherborne
Dorset DT9 5NR
+44 (0) 1935 813182
www.sherbornecastle.com
castleoffice@sherbornecastle.com

Waddesdon Manor

Near Aylesbury
Buckinghamshire HP18 0JH
+44 (0)1296 820414
www.waddesdon.org.uk
enquiries@waddesdon.org.uk



Sponsors and
Partners

ESSENTIAL ART & ANTIQUES COVERAGE



antiquetradegazette.com/subscribe

*£54.95 per quarter thereafter



典藏 古美術

ART & COLLECTION



台北辦事處 Taipei

104台北市中山區中山北路一段85號3樓
3F, No.85, Sec.1, Zhongshan N. Rd., Taipei, Taiwan 104, R.O.C.
Tel/ 886-22560-2220#318

北京辦事處 Beijing

北京市大興區魏善莊龍江路北京密碼2號樓5單元401室
Room 401, Unit 5, Building 2, Beijing Password,
Longjiang Road, Weishanzhuang, Daxing District, Beijing
北京地區業務副理 田繼超
Tel/ 86-10-51056692 Mobile Phone/ 86-13910223375

上海辦事處 Shanghai

上海地區業務副理 張華
Mobile Phone/ 86-13386202280



典藏藝術網官網
Website



IG官方帳號
Instagram



古美術臉書
Art & Collection FB



官方微信帳號
WeChat

Arts of Asia Complete Digital Archive

Subscribe to the complete archive of *Arts of Asia*
spanning over 55 years with 320 issues from
the first 1971 edition to the current



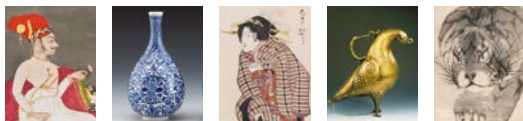
As part of our commitment to offer you an informative publication combining academic and commercial aspects of Asian art, we have digitalised our complete archive from our first 1971 issue to the current edition. Subscriptions to this archive—an invaluable research tool with 320 text searchable issues—and purchasable digital back issues are now available.

www.artsofasia.com



ASIAN ART

THE NEWSPAPER FOR COLLECTORS, DEALERS, MUSEUMS AND GALLERIES



In each issue, our features play an important part in the mix, so why not explore the arts of painting, ceramics, metalwork or lacquerware, as well as specialised histories, the list is huge

EXPLORE THE ARCHIVES

*Immerse yourself in the world of Asian and Islamic art
in Asian Art Newspaper's complete archive,
from the first issue in November 1997*

You'll find a wealth of information at your fingertips, including a host of features on ceramics, textiles, furniture, paintings and print, as well as travel articles, the best books and exhibition catalogues published over the last 20 years.

And an archive full of Asian Contemporary Voices – interviews with celebrated artists, architects, writers and academics, and more from the Asian and Islamic art worlds. There's over 200 artist profiles, historic auction information, and a host of blockbuster exhibitions from past years.

An index to all back issues can be found on our website, asianartnewspaper.com/index



Thousands of book recommendations at your fingertips



Xu Bing
January 1999



Shazia Sikander
June 2021



Nalini Malani
Dec 2017



Tsherin Sherpa
March 2024



Lee Ufan
March 2014



Tsherin Sherpa
March 2024



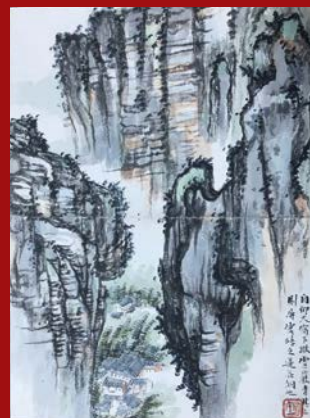
Our cover stories reflect major events in the Asian and Islamic art worlds

Contact us for more information on pricing and how to access
asianartnewspaper.com
info.asianart@btinternet.com

THE BURLINGTON MAGAZINE

is seeking submissions
of articles on

THE ARTS OF ASIA



Since its foundation in 1903, *The Burlington Magazine* has consistently published research on Asian art from all periods.

To submit your article for consideration, please first email a 150-word proposal to the Articles Editor, Christine Gardner-Dseagu, gardner-dseagu@burlington.org.uk

Welcome to CANS, presenting the latest

CANS



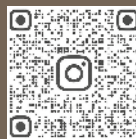
trends in the art scene of China, Hong Kong, Taiwan, and the Asia Pacific region. Our mission is to inform, engage, and connect you to the global developments in the art industry from an Asian perspective.

WHERE CLASSIC AND
CONTEMPORARY CONVERGE

FINE ART ASIA

4.10—7.10.2025

HK CONVENTION & EXHIBITION CENTRE



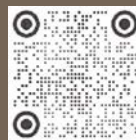
Instagram



Facebook



微信 Wechat



小红书 Xiaohongshu

fineartasia.com

For enquiries, please contact us at

info@aaifair.com

Hali

Hali Publications offers a competitively priced book/catalogue packaging and production service for high-quality publication projects. We work with corporate and private clients, museums and publishers.



For more information, please contact:
Ben Evans

+44 (0) 20 3727 4941 | ben.evans@hali.com

FILM SCREENING

Q&A with director Amélie Ravalet
+ Thames & Hudson book signing

Directed by Amélie Ravalet

JAPANESE AVANT-GARDE PIONEERS

CIRCLE TIME STUDIO and WHATSOPP INC. PRESENT JAPANESE AVANT-GARDE PIONEERS DIRECTED BY AMÉLIE RAVALEC CO-PRODUCED BY MAASERHIT HONDA
FEATURING ARAKI NODOKOSHI, MORIYAMA DAIZO, HOSOE EIKO, YOKOJI FUMIYUKI, TANAKA KENJI, TERAYAMA SHUN, KISHIMOTO MIYUKI,
KAWADA KIKUO, PROVOKE, HANAGA MITSUTOSHI, ANAZU KATSUHI, HIRAKATA TATSUMI, OHINO AKIO, TANABE SATORU.

www.japanavantgarde.com

アメリー・ラヴァレック

日本前衛派の開拓者

BERTHA DOCHOUSE



BERTHA DOCHOUSE
Thursday 30th October
18:20

Curzon Bloomsbury, The Brunswick Centre,
London WC1N 1AW



PICTOGRAMS

Iconic Japanese Designs



本質のかたち

30 July —
9 November 2025

Exhibition | Free Admission

JAPAN HOUSE
LONDON



Heads? Tails? Both? Or neither?



Join us for a discussion on
Marg's recent volume

The Third Side of the Coin

with Joe Cribb

Robert Bracey and Marzbeen Jila
moderated by Naman P. Ahuja

13th November, 2025 (Thursday)

6:30 PM

Royal Asiatic Society, London



To order your copy or subscribe,
scan/ write to us at: foundation@marg-art.org

ORIENTATIONS

An essential addition to every library



Published six times in a year and available in print and digital.

1 year	2 years	
HK\$800	HK\$1500	(Local delivery)
US\$150	US\$295	(Zone I surface mail)
US\$155	US\$305	(Zone II surface mail)
US\$170	US\$335	(Zone I airmail)
US\$190	US\$375	(Zone II airmail)

Zone I: China, India, Indonesia, Japan, Korea, Macau, Malaysia, Philippines, Singapore, Sri Lanka, Thailand, Taiwan, and Vietnam

Zone II: Rest of the world

Digital 1-year subscription US\$59.99

Orientations Magazine Ltd

Unit 1501, 15/F, M Place, No. 54 Wong Chuk Hang Road, Hong Kong

T: +852 2511 1368

info@orientations.com.hk www.orientations.com.hk

V&A South Kensington
28 Oct 2025–27 Sept 2026

Free display

DIMENSIONS



Chinese Contemporary Studio Crafts

Supported by
KennedyTing and Tiān Foundation

Image: Xu Shiyuan, Vena (Celadon), 2021



SPONSORS

ANTIQUES TRADE
gazette
THE ART MARKET WEEKLY

APOLLO
THE INTERNATIONAL ART MAGAZINE

MUSEUM PARTNERS

ASHMOLEAN

The British
Museum

**BRITISH
LIBRARY**

The
Fitzwilliam
Museum
CAMBRIDGE

V&A

THE
COURTAULD
Institute of Art

ROYAL
COLLECTION
TRUST



THE
WALLACE
COLLECTION

MEDIA PARTNERS

Arts of Asia



典藏 藝術家庭
ART & COLLECTION GROUP

ASIAN ART
THE NEWSPAPER FOR COLLECTORS, DEALERS, MUSEUMS AND GALLERIES
www.asianartnewspaper.com



THE
BURLINGTON
MAGAZINE



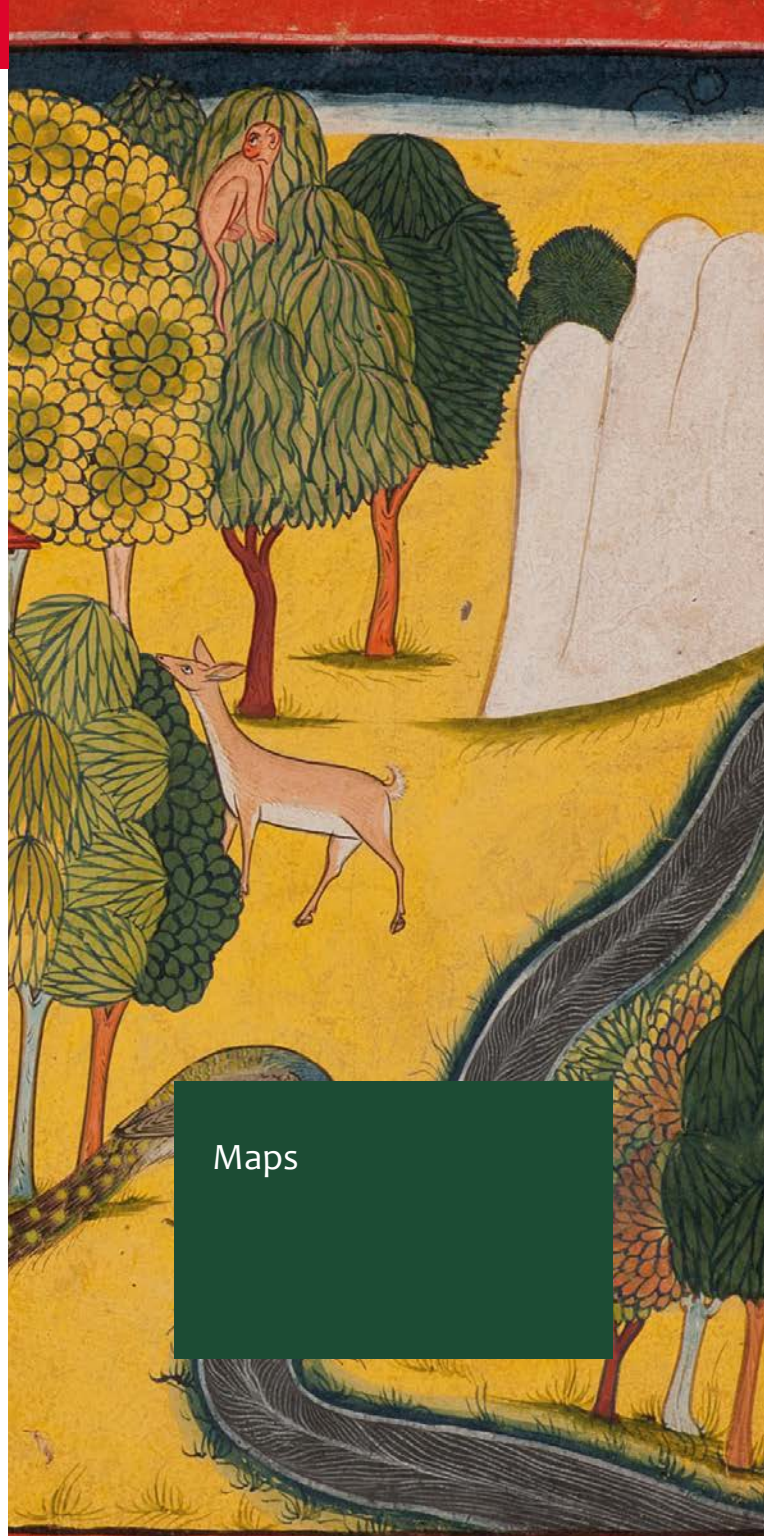
**FINE
ART
ASIA**

HALI

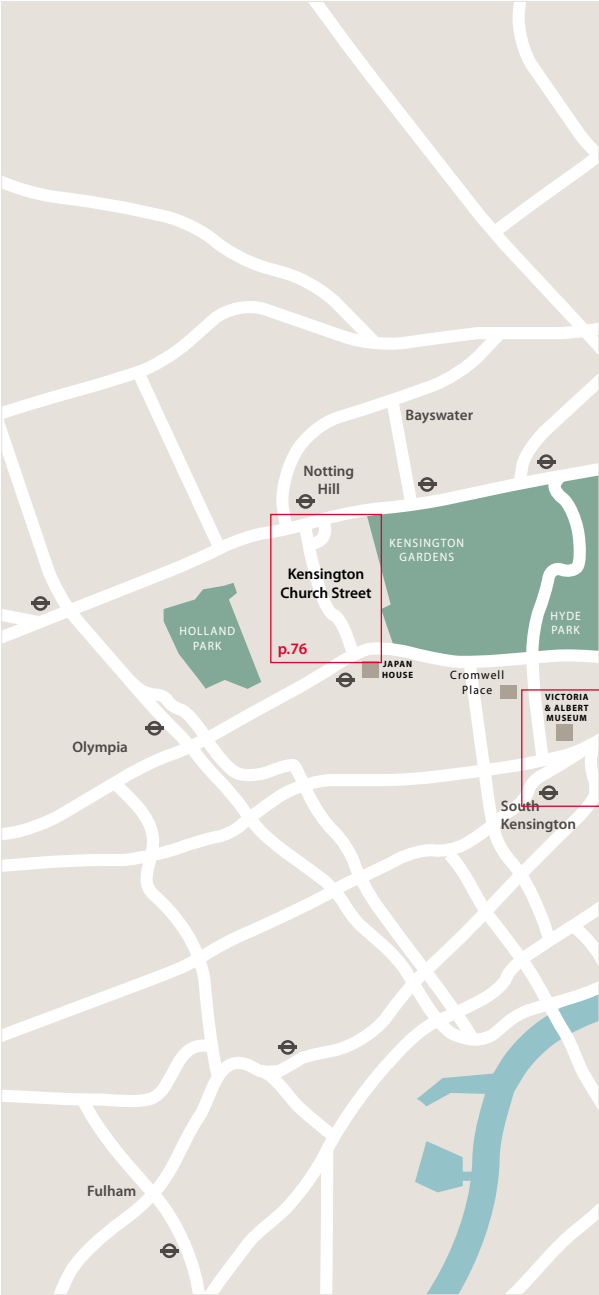
Mang

ORIENTATIONS
The magazine for collectors and connoisseurs of Asian art

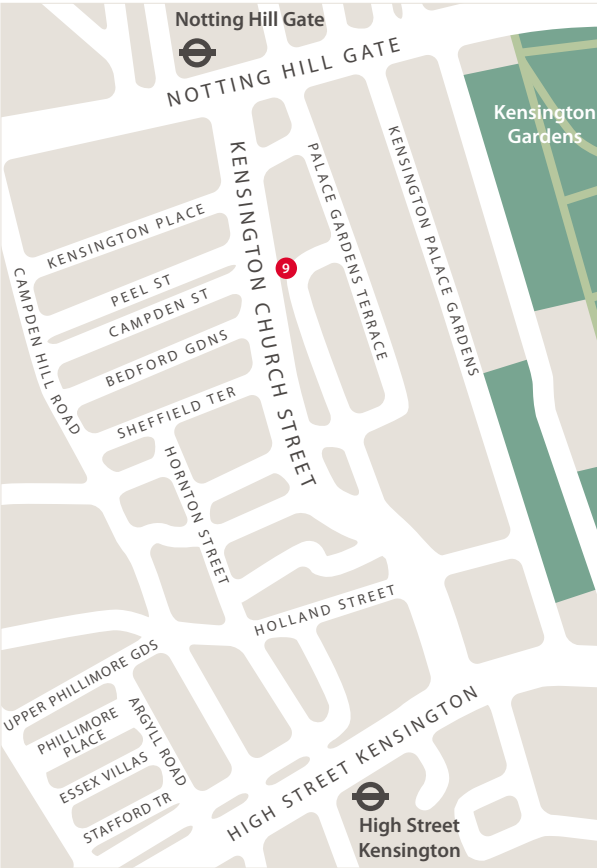
Tendencias
del Mercado del Arte



Maps



Kensington Church Street

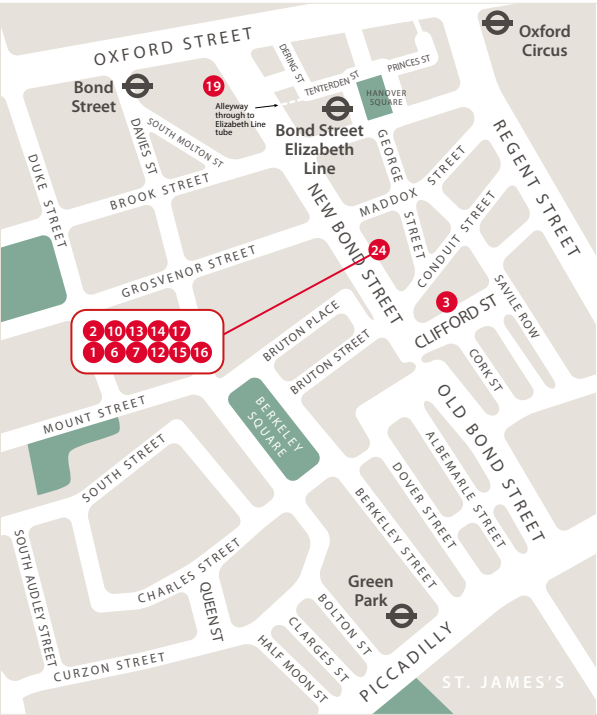


Kensington Church Street late night opening, Saturday 1st November 17.00–20.00.

MAP ABOVE

- 9 Marchant

Mayfair



Mayfair late night opening, Monday 3rd November 17.00–20.00 (opening times may vary, please check individual participant entries for details).

MAP ABOVE

- 3 Eskenazi Ltd
- 19 Bonhams
- 24 Sotheby's

EXHIBITING AT SOTHEBY'S (CONDUIT STREET GALLERY)

- 2 Lloyd Choi
- 10 Susan Page
- 13 Schoeni Projects
- 14 Anastasia von Seibold
- 17 Thang Long Art Gallery

EXHIBITING AT SOTHEBY'S (ST. GEORGE STREET GALLERY)

- 1 Anrad Gallery
- 6 Hanga Ten
- 7 Japan Print Gallery
- 12 Simon Pilling
- 15 Jacqueline Simcox Ltd
- 16 Slaats Fine Art



St James's

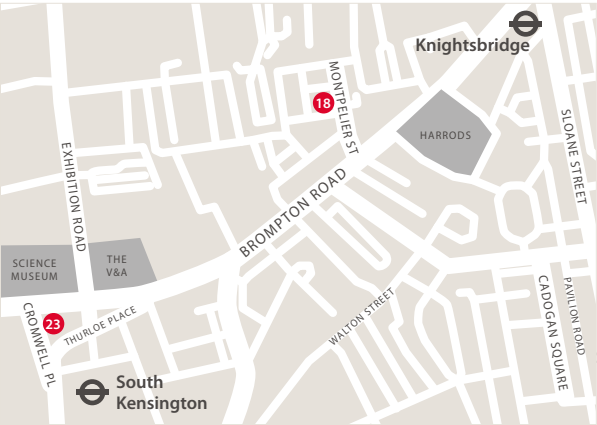


St James's late night opening, Sunday 2nd November, 17.00–20.00 (opening times may vary, please check individual participant entries for details).

MAP ABOVE

- 4 Michael Goedhuis and Tomasso
- 20 Christie's
- 23 Roseberys (East Asian viewing)
- 25 Amir Mohtashemi

Knightsbridge & South Kensington



No late night opening.

MAP ABOVE

- 18 Bonhams Knightsbridge
- 23 Roseberys (Indian & Islamic viewing)

Marylebone



No late night opening.

MAP ABOVE

21 Dore and Rees

Marble Arch

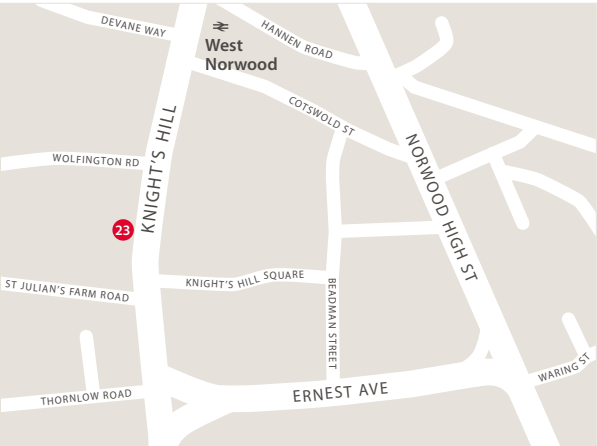


Marble Arch late night viewing, Monday 3rd November until 20.00.

MAP ABOVE

22 Lyon & Turnbull

West Norwood



Late night viewing in central London, Sunday 2nd November until 20.00 at Bowman Sculpture, 6 Duke Street, St James's.

MAP ABOVE

23 Roseberys



facebook.com/asianartinlondon



@AsianArtLondon



@asianartinlondon



Asian Art in London

(Office address only)
21 John Street
London WC1N 2BF

+44 (0)7388 863 976
info@asianartinlondon.com
www.asianartinlondon.com

Henry Howard-Sneyd	Chair & Director
Simon Pilling	Deputy Chair & Director
Rob Dean	Director
Rachel Hyman	Director
Julian King	Director
Samuel Marchant	Director
Behnaz Atighi Moghaddam	Director
Nicole Schoeni	Director
Jacqueline Simcox	Director
Runjeet Singh	Director
Mark Slaats	Director
Sophie Kempson	Programme Development Director



ASIAN ART
IN LONDON

Asian Art in London
+44 (0)7388 863 976
info@asianartinlondon.com
www.asianartinlondon.com