



Asian Art in London

Indian & Islamic Art: 19 – 28 October

East Asian Art: 26 October – 4 November

Asian Art in London
21 John Street
London WC1N 2BF
(Office address only)

+44 (0)7388 863 976
info@asianartinlondon.com
www.asianartinlondon.com

We are pleased to confirm that this guidebook is fully recyclable; please kindly recycle it after use.

The contents of this guide are believed to be correct at the time of printing. Nevertheless, the authors, publishers and Directors of Asian Art in London shall not be liable for loss or harm of any kind which may arise or result from any errors, inaccuracies or omissions.



Contents

Events

- 3 Introduction
- 4 Late Night Openings
- 5 Champagne Reception
- 6 What's On

Participants: Dealers and Galleries

- 10 Participant Specialities
- 12 Dealers and Galleries
- 37 Non-Exhibiting Participants

Participants: Auction Houses

- 38 Participant Specialities
- 40 Auction Houses
- 53 Auction Dates

Asian Collections, Societies, etc

- 58 Asian Collections in London
- 59 Asian Collections Outside London
- 60 Asian Societies and Cultural Centres
- 62 Other Asian Collections

81 Sponsors and Partners

84 Maps



The 26th edition of **Asian Art in London** takes place from **19th October–4th November 2023**.

From 19th–28th October the focus is on Indian & Islamic Art.

From 26th October–4th November the focus is on East Asian Art.

For the very latest updates and events calendar, please visit:
www.asianartinlondon.com

第二十六届伦敦亚洲艺术周将于2023年10月19日至11月4日举行。

10月19日 - 10月28日我们将聚焦于印度与伊斯兰艺术板块，10月26日 - 11月4日为东亚艺术板块。

了解我们最新内容以及活动日程，请登陆官方网站：www.asianartinlondon.com

Asian Art in London

+44 (0)7388 863 976

info@asianartinlondon.com

www.asianartinlondon.com

Open Evenings

Participating Galleries and Auction Houses are delighted to invite you to **Late Night Openings**.

At the time of writing, the following Participants will open late, but please check the **Asian Art in London** website for the latest information and please note that opening times will vary.
www.asianartinlondon.com

INDIAN & ISLAMIC ART 19th–28th October

CROMWELL PLACE
Friday 20th October 17.00 onwards
Anrad Gallery | Schoeni Projects

ST JAMES'S
Sunday 22nd October 17.00 onwards
Christie's | W. SHANSHAN 珊然軒

EAST ASIAN ART 26th October–4th November

CROMWELL PLACE
Friday 27th October 17.00 onwards
Alisan Fine Arts | ArtChina | Hanga Ten | Katie Jones |
Mo Hai Lou 墨海樓 | Simon Pilling | Schoeni Projects |
Anastasia von Seibold | Jacqueline Simcox | Runjeet Singh

KENSINGTON CHURCH STREET
Saturday 28th October 17.00 onwards
J.A.N. Fine Art | Marchant | Jorge Welsh

ST JAMES'S
Sunday 29th October 17.00 onwards
3812 Gallery | Rob Dean Art | Grosvenor Gallery |
Littleton & Hennessy | Pundole's | Susan Page Snuff Bottles |
Priestley & Ferraro | Roseberys | W. SHANSHAN 珊然軒

MAYFAIR
Monday 30th October 17.00 onwards
3812 Gallery | Bonhams | Eskenazi Ltd | Sotheby's

Champagne Reception

To celebrate the 26th edition of **Asian Art in London**, a Champagne Reception will be held at Sotheby's, New Bond Street.

The Directors of **Asian Art in London** hope you will join our Participants, the directors and curators from museums worldwide, academic specialists, visitors and collectors to celebrate this year's edition.

DATE
Thursday 26th Oct 18.30–20.30
Champagne & canapés

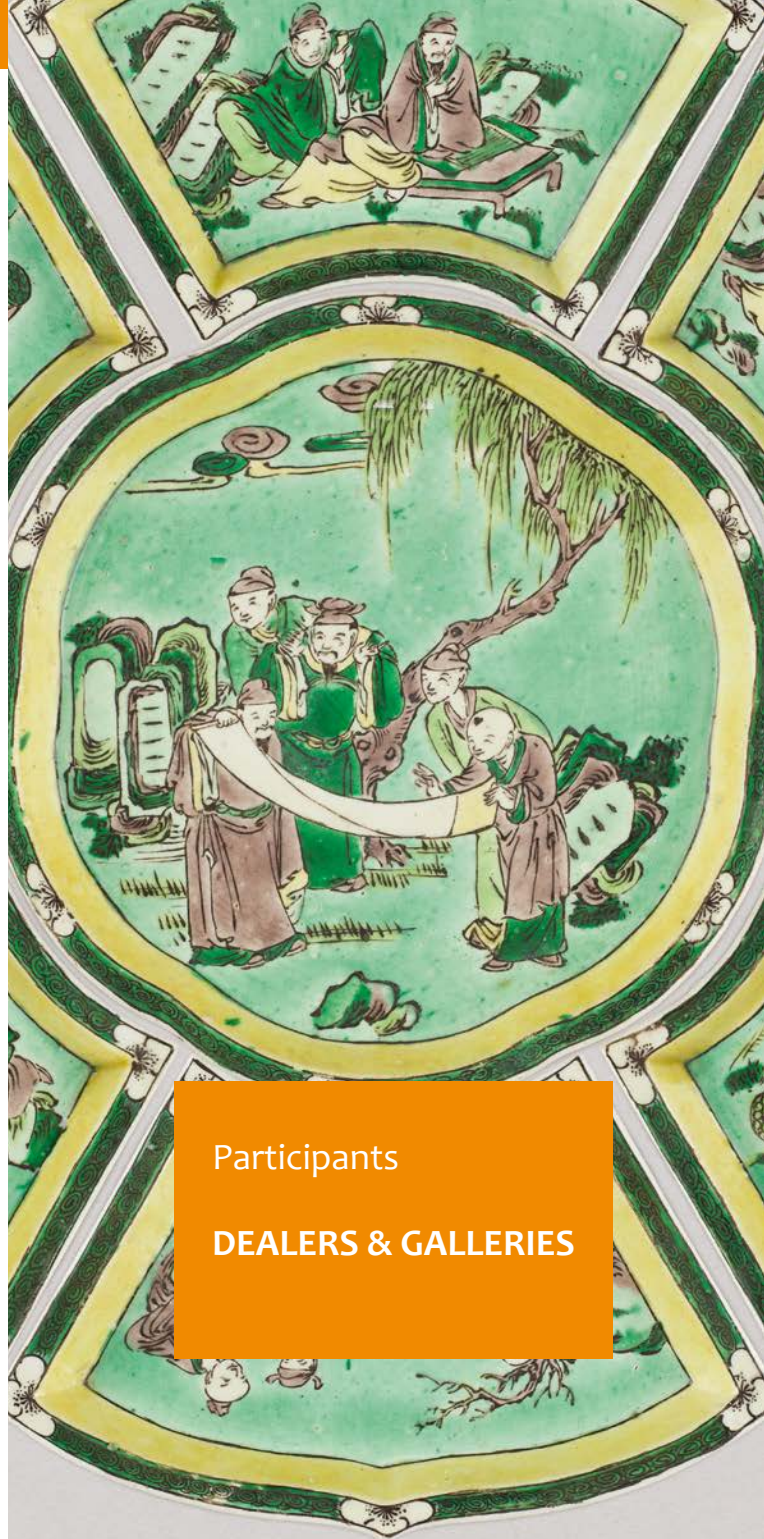
VENUE
Sotheby's
34–35 New Bond St
London W1A 2AAL

PRICE
Tickets: £80 inc. VAT
For tickets, please contact:
sophie@asianartinlondon.com

Please note:
Admission by pre-booked ticket only.
Tickets are non-refundable and strictly non-transferable.

	Dealers	Speciality											
1	3812 Gallery								C				Co
2	Alisan Fine Arts			S					C				Co
3	Anrad Gallery Ltd		I										Co
4	ArtChina								C				Co
5	Kamal Bakhshi										J		Co
6	Rob Dean Art		I		H								
7	Eskenazi Ltd								C				Co
8	Michael Goedhuis								C				Co
9	Grosvenor Gallery (Fine Arts) Ltd		I										Co
10	Hanga Ten										J		Co
11	J.A.N. Fine Art	M		S	H		C	J		K			
12	Katie Jones										J		Co
13	Lam & Co UK								C				
14	Littleton & Hennessy Asian Art								C				
15	Marchant								C	J		E	
16	Mo Hai Lou								C	J			Co
17	Susan Page Snuff Bottles								C				
18	Simon Pilling										J		Co
19	Priestley & Ferraro								C			K	
20	Schoeni Projects								C	J			Co
21	Anastasia Von Seibold Japanese Arts										J		Co
22	W. Shanshan 珊然軒								C	J		K	
23	Jacqueline Simcox Ltd					H			C				
24	Runjeet Singh	M	I	S	H		C	J		K			
25	Jorge Welsh Works of Art		I	S			C	J				E	

- | | | | |
|----------|-------------------------------|-----------|------------------|
| M | Islamic & Middle Eastern Art | J | Japanese Art |
| I | Indian Art | K | Korean Art |
| S | Southeast Asian Art | E | Export Art |
| H | Himalayan & Central Asian Art | Co | Contemporary Art |
| C | Chinese Art | | |



Participants

DEALERS & GALLERIES



3812 Gallery

1 | SEE MAP PAGE 88

21 Ryder Street, St. James's
London SW1Y 6PX

Evangeline Li

+44 (0)20 3982 1863

london@3812cap.com

www.3812gallery.com

EXHIBITION HOURS

Late Night Openings

Fri 27th Oct 10.00–20.00
Sun 29th Oct 17.00–20.00
Mon 30th Oct 10.00–20.00

Thurs 19th–
Fri 20th Oct 10.00–18.30
Sat 21st Oct 11.00–14.00
Mon 23rd–
Wed 25th Oct 10.00–19.00
Thurs 26th–
Fri 27th Oct 10.00–20.00
Sat 28th Oct 11.00–14.00
Sun 29th Oct 17.00–20.00
Mon 30th Oct 10.00–20.00
Tues–Fri 10.00–18.30
Sat 4th Nov 11.00–14.00

EXHIBITION

Eastern Origin, Contemporary Expression

DESCRIPTION

Presenting works by artists Zao Wou-Ki, Hsiao Chin, Raymond Fung, Liu Guofu, Chloe Ho, TJ Ren and Qian Wu

ON VIEW

19th Oct–4th Nov

SPECIALISATION

Modern and contemporary
Chinese art

Alisan Fine Arts

2 | SEE MAP PAGE 89

Gallery 11, Ground floor
4 Cromwell Place, South Kensington
London SW7 2JE

Pansy Chiu

+852 2526 1091

pchiu@alisan.com.hk

www.alisan.com.hk



EXHIBITION

Beyond Tradition: The Metamorphosis of Chinese Art

DESCRIPTION

Presenting 15 artists across generations, this exhibition surveys the evolution of Chinese art over the past 50 years. Artists include: Lui Shou-Kwan, Gao Xingjian, Walasse Ting and Gu Gan

ON VIEW

26th Oct–5th Nov

SPECIALISATION

Chinese diaspora, eminent and emerging Chinese artists with a focus on ink art

BUSINESS ADDRESS

21/F Lyndhurst Tower
1 Lyndhurst Terrace
Central
Hong Kong

EXHIBITION HOURS

Cromwell Place Lates x Asian Art in London

Fri 27th Oct 18.00–20.00

RSVP Essential for security

RSVP: assistant@alisan.com.hk

Thurs 26th Oct 11.00–19.00
Fri 27th Oct 11.00–20.00
Sat 28th Oct 11.00–19.00
Sun 29th Oct 11.00–16.00
Mon–Sat 11.00–19.00
Sun 5th Nov 11.00–16.00

TALK

Media and Materiality in Contemporary Chinese Art

Dr Malcolm McNeill, Director of the SOAS Postgraduate Diploma in Asian Art and Senior Lecturer in Arts Education, SOAS University of London

31st Oct

17.00–18.00

RSVP: assistant@alisan.com.hk

Guided Tours

26th Oct & 1st Nov

14.30–15.00

28th Oct & 3rd Nov

11.30–12.00

RSVP: assistant@alisan.com.hk



Anrad Gallery Ltd

3 | SEE MAP PAGE 89

Gallery Arc, Ground floor
5 Cromwell Place, South Kensington
London SW7 2JE

Anuradha Nayar

+44 (0)7778 483 498

anuradha@anradgallery.com

arnayar@gmail.com

www.anradgallery.com

EXHIBITION HOURS

Late Night Opening

Fri 20th Oct 11.00–20.00

RSVP Essential for security

RSVP:

anuradha@anradgallery.com

Thurs 19th Oct 11.00–19.00

Fri 20th Oct 11.00–20.00

Sun 22nd Oct 11.00–16.00

Mon 23rd Oct 11.00–19.00

Tues 24th Oct 11.00–19.00

EXHIBITION

Nature's Mirror: An artistic exploration of the natural world viewed through the lens of tradition

DESCRIPTION

The show presents a contemporaneous exploration of vignettes of an agrarian life. The artists are drawn from the Gond, Madhubani and Kalamkari communities of India and the show interweaves their individual visual interpretations of ancient belief systems which shape their understanding of man's place in the natural world. The exhibition underscores the unity and universality presented by the diverse visual languages.

ON VIEW

19th–24th Oct

SPECIALISATION

Non-studio art from India; Tribal and Folk art

BUSINESS ADDRESS

31 Eton Court
Eton Avenue
London NW3 3HJ

Catalogue available

ArtChina

4 | SEE MAP PAGE 89

Gallery 6, Second floor
4 Cromwell Place, South Kensington
London SW7 2JE

Aimin Liu

+44 (0)7817 029 618

aimin@artchinauk.com

www.artchinauk.com



EXHIBITION

Yichun Huang: Multi-Dimensional World of Healing Colours

DESCRIPTION

Immerse yourself in a transformative journey through vibrant artworks merging the enigmatic cosmos, ancient myths, and tangible realities, evoking a world of healing colours with Yichun Huang

ON VIEW

26th Oct–1st Nov

SPECIALISATION

We specialise in Chinese Contemporary art and print

BUSINESS ADDRESS

By appointment only
Cambridge
UK



EXHIBITION HOURS

Cromwell Place Lates x Asian Art in London

Fri 27th Oct 18.00–20.00

RSVP Essential for security

RSVP: aimin@artchinauk.com

Thurs 26th Oct 11.00–18.00

Fri 27th Oct 11.00–20.00

Sat 28th Oct 11.00–19.00

Sun 29th Oct 11.00–16.00

Mon 30th–

Tues 31st Oct 11.00–19.00

Wed 1st Nov 11.00–16.00

TALK

Multi-Dimensional Colour Healing World

27th Oct

14.00

RSVP: info@artchinauk.com

A Multi-Dimensional Journey from Sacred Geometry to the Present

28th Oct

14.00

RSVP: info@artchinauk.com

Deities in Chinese Mythology Headed by Dragons

29th Oct

14.00

RSVP: info@artchinauk.com

Catalogue available online



Kamal Bakhshi

5 | SEE MAP PAGE 86

1 Phillimore Place
London W8 7BY

Kamal Bakhshi

+44 (0)20 7937 9868

+44 (0)7843 273 638

kamal@kamalbakhshi.co.uk

www.kamalbakshi.co.uk



EXHIBITION HOURS BY APPOINTMENT ONLY

Thurs 26th Oct 10.00–17.00

Fri 27th Oct 10.00–18.30

Sat 28th Oct 10.00–20.30

Sun 29th Oct–

Sat 4th Nov 10.00–18.30

TALK

The Way of the Print

Wed 1st Nov

14.30

RSVP: kamal@kamalbakhshi.co.uk

EXHIBITION Recent Acquisitions

DESCRIPTION

Recent Acquisitions

ON VIEW

26th Oct–4th Nov by appointment

SPECIALISATION

Modern Japanese Prints and
Paintings

Rob Dean Art

6 | SEE MAP PAGE 88

Grosvenor Gallery
35 Bury Street, St James's
London SW1Y 6AY

Rob Dean

+44 (0)7764 942 306

rob@robdeanart.com

www.robdeanart.com



EXHIBITION Views of India

DESCRIPTION

During Asian Art in London 2023 we will be exhibiting Views of India, by European and Indian artists from the 18th century to the present day. The exhibition will be held at 35 Bury Street in association with the Grosvenor Gallery

ON VIEW

26th Oct–3rd Nov

SPECIALISATION

Modern and Classical South Asian
Art

BUSINESS ADDRESS

1 The Street
Woolpit
Bury St Edmunds
Suffolk IP30 9SA

EXHIBITION HOURS Late Night Opening

Sun 29th Oct 17.00–20.00

Thurs 26th Oct 10.00–17.00

Fri 27th Oct 10.00–17.00

Sat 28th Oct 12.00–16.00

By appointment

Sun 29th Oct 17.00–20.00

Mon 30th Oct 10.00–17.00

Tues 31st Oct 10.00–17.00

Wed 1st Nov 10.00–17.00

Thurs 2nd Nov 10.00–17.00

Fri 3rd Nov 10.00–17.00



Eskenazi Ltd

7 | SEE MAP PAGE 87

10 Clifford Street
Mayfair
London W1S 2LJ
Daniel Eskenazi, Sarah Wong
+44 (0)20 7493 5464
gallery@eskenazi.co.uk
www.eskenazi.co.uk



EXHIBITION HOURS

Late Night Opening

Mon 30th Oct 09.30–20.00

Thurs 19th–

Fri 27th Oct 09.30–17.30

Sat 28th–

Sun 29th Oct 10.00–17.00

Mon 30th Oct 09.30–20.00

Tues 31st Oct–

Fri 3rd Nov 09.30–17.30

Sat 4th Nov 10.00–17.00

EXHIBITION

Chinese ceramics, lacquer and gold from the 12th to the 14th century

ON VIEW

19th Oct–4th Nov

SPECIALISATION

Chinese works of art

Michael Goedhuis

8 | SEE MAP PAGE 89

61 Cadogan Square, Flat 3
London SW1X 0HZ
Michael Goedhuis
+44 (0)20 7823 1395
+44 (0)7760 625 375
london@michaelgoedhuis.com
www.michaelgoedhuis.com



EXHIBITION

China and Japan: Ink, Brush and Bronze

DESCRIPTION

The exhibition will present three of the leading Chinese contemporary ink artists...

Yao Jui-chung, Guan Zhi and Lo Ch'ing, together with the boundary-breaking calligraphic work of the foremost woman calligrapher in Japan, Tomoko Kawao. The works will be presented within an environment of Japanese bronze flower vessels

ON VIEW

24th–29th Oct

SPECIALISATION

Chinese and Japanese contemporary Ink Painting, later and archaeological Chinese and Japanese bronzes, and young Western contemporary



EXHIBITION HOURS

Tues 24th Oct 18.00–21.00

Wed 25th–

Fri 27th Oct 10.00–18.00

Sat 28th Oct 10.00–17.00

Sun 29th Oct 12.00–16.00

TALK

Chinese and Japanese contemporary Ink Painting, later and archaeological Chinese and Japanese bronzes, and young Western contemporary

26th Oct

15.00

RSVP:

london@michaelgoedhuis.com



Grosvenor Gallery

9 | SEE MAP PAGE 88

35 Bury Street
St. James's
London SW1Y 6AU

Conor Macklin, Charles Moore
Kajoli Khanna

+44 (0)20 7484 7979

art@grosvenorgallery.com
www.grosvenorgallery.com

EXHIBITION HOURS

Late Night Opening

Sun 29th Oct 17.00–20.00

Thurs 26th–

Fri 27th Oct 10.00–17.00

Sat 28th Oct 12.00–16.00

By appointment

Sun 29th Oct 17.00–20.00

Mon 30th–

Fri 3rd Nov 10.00–17.00

EXHIBITION

Views of India

DESCRIPTION

During Asian Art in London 2023 we will be exhibiting Views of India, by European and Indian artists from the 18th century up to the present day. The exhibition will be held at 35 Bury Street in association with Rob Dean Art

ON VIEW

26th Oct–3rd Nov

SPECIALISATION

Modern and Contemporary South Asian Art

Hanga Ten

10 | SEE MAP PAGE 89

Gallery 1, Ground floor
4 Cromwell Place, South Kensington
London SW7 2JE

Chiko Nara

+44 (0)7788 458 201

japaneseprints@hangaten.com
www.hangaten.com



EXHIBITION

Flora and Fauna in Contemporary Japanese Art

DESCRIPTION

Our exhibition highlights how contemporary Japanese artists have incorporated flora and fauna images utilising both traditional and unique techniques of printmaking and painting

ON VIEW

26th Oct–1st Nov

SPECIALISATION

Contemporary Japanese Prints and Paintings

BUSINESS ADDRESS

By appointment only
PO Box 67812
London SW7 9BL

EXHIBITION HOURS

Cromwell Place Lates x Asian Art in London

Fri 27th Oct 18.00–20.00

RSVP Essential for security

RSVP:

japaneseprints@hangaten.com

Thurs 26th Oct 11.00–19.00

Fri 27th Oct 11.00–20.00

Sat 28th Oct 11.00–19.00

Sun 29th Oct 11.00–16.00

Mon 30th–

Tues 31st Oct 11.00–19.00

Wed 1st Nov 11.00–16.00

TALK

Short Intro to Flora and Fauna in

Contemporary Japanese Art

28th Oct

11.00–11.15

japaneseprints@hangaten.com



J.A.N. Fine Art

11 | SEE MAP PAGE 86

132 - 134 Kensington Church Street
London W8 4BH

Adam Shimizu

+44 (0)20 7792 0736

+44 (0)7703 989 724

info@jan-fineart-london.com

www.jan-fineart-london.com

EXHIBITION HOURS

Late Night Opening

Sat 28th Oct 10.00–20.30

Thurs 19th Oct 10.00–18.00

Fri 20th Oct 10.00–18.00

Sat 21st Oct By appointment

Sun 22nd Oct By appointment

Mon 23rd–

Fri 27th Oct 10.00–18.00

Sat 28th Oct 10.00–20.30

Sun 29th Oct By appointment

Mon–Fri 10.00–18.00

Sat 4th Nov 10.00–17.00

EXHIBITION

典麗 Ten Rei - Elegance

DESCRIPTION

Pre-Ming Dynasty Elegance

ON VIEW

19th Oct–4th Nov

SPECIALISATION

Oriental Ceramics, Paintings and
Works of Art

Katie Jones

12 | SEE MAP PAGE 89

Gallery 12, Second floor
4 Cromwell Place, South Kensington
London SW7 2JE

Katie Jones

+44 (0)20 7289 1855

+44 (0)7850 474 708

info@katiejonesjapan.com

www.katiejonesjapan.com



EXHIBITION

Contemporary Japanese works of Art

DESCRIPTION

Katie Jones represents the best
of Japan's current generation in
a wide range of media - including
ceramic, metalwork, textile,
lacquer and glass

ON VIEW

26th Oct–1st Nov

SPECIALISATION

Contemporary Japanese Art

BUSINESS ADDRESS

By appointment only
London



EXHIBITION HOURS

Cromwell Place Lates x Asian Art in London

Fri 27th Oct 18.00–20.00

RSVP Essential for security

RSVP: info@katiejonesjapan.com

Thurs 26th Oct 11.00–19.00

Fri 27th Oct 11.00–20.00

Sat 28th Oct 11.00–19.00

Sun 29th Oct 11.00–16.00

Mon 30th Oct 11.00–19.00

Tues 31st Oct 11.00–19.00

Wed 1st Nov 11.00–16.00



Lam & Co UK

13 | SEE MAP PAGE 88

4 Masons Yard
St James's
London SW1Y 6BU

Rex Lam

gallery@lamcouk.com
www.lamcouk.com

EXHIBITION HOURS

Thurs 26th Oct–
Sat 4th Nov 12.00–18.00

EXHIBITION

A Chinese Art Odyssey: Journey Through Time, Ceramics and Creative Treasures

DESCRIPTION

We invite you on a captivating journey through this exhibition to explore not only the mesmerising world of ceramics and pottery but also to discover the diverse array of creative treasures that have shaped Chinese culture through the ages

ON VIEW

26th Oct–4th Nov

SPECIALISATION

Chinese Works of Art

Catalogue available

Littleton & Hennessy Asian Art

14 | SEE MAP PAGE 88

1 Princes Place
Duke Street, St. James's
London SW1Y 6DE

Mark Slaats

+44 (0)20 7930 0888
+44 (0)7717 825 828

mark@littletonandhennessy.com
www.littletonandhennessy.com



EXHIBITION

Objects for the Scholar's Table

DESCRIPTION

Exquisite objects in jade, rock crystal, stone and porcelain made for the scholar, the scholar's table and their studio

ON VIEW

26th Oct–3rd Nov

SPECIALISATION

Chinese Works of Art and
Scholars' Objects

EXHIBITION HOURS

Late Night Opening

Sun 29th Oct 17.00–20.00

Mon–Fri 10.00–17.00

Sat 28th Oct 12.00–17.00

Sun 29th Oct 12.00–17.00

E-catalogue available



Marchant

15 | SEE MAP PAGE 86

120 Kensington Church Street
London W8 4BH

Samuel Marchant, Stuart Marchant
Natalie Marchant, Richard Marchant

+44 (0)20 7229 5319

+44 (0)20 7229 3770

gallery@marchantasianart.com

www.marchantasianart.com

EXHIBITION HOURS

Late Night Opening

Sat 28th Oct 17.00–20.00

Mon 23rd–

Fri 27th Oct 10.30–17.30

Sat 28th Oct 10.30–20.00

Sun 29th Oct Closed

Mon 30th Oct–

Fri 3rd Nov 10.30–17.30

TALK

Kangxi Biscuit & Pottery, Exhibition Talk

Sat 28th Oct

17.00–18.00

RSVP:

gallery@marchantasianart.com

EXHIBITION

Kangxi Biscuit & Pottery: A French Private Collection

DESCRIPTION

Marchant is holding an exhibition titled *Kangxi Biscuit & Pottery: A French Private Collection*. This entire group was collected between 1924–1941, most pieces even state where and when they were purchased, online catalogue will be available

ON VIEW

23rd Oct–3rd Nov

SPECIALISATION

Chinese Ceramics, Ming and Qing
Imperial Porcelain, Kangxi Wares,
Jade, Cloisonné and Works of Art

E-catalogue available

Mo Hai Lou 墨海樓

16 | SEE MAP PAGE 89

Pavilion Gallery, Ground floor
4 Cromwell Place, South Kensington
London SW7 2JE

Dr. Edward Ye

+886 2 27312899

+886 975933998

+886 905958999

info@mohailou.com

drye.art@gmail.com

www.mohailou.com



EXHIBITION

Metamorphosis 蛻變

DESCRIPTION

Featuring the metamorphosed creations of six prominent Chinese and Japanese artists: Fu YiYao, Tai XiangZhou, Grace Han, Ren TianJin, Vincent Fang and Liang YungFei, whose contemporary reinterpretations draw inspiration from tradition and historical roots, while transcending all cultural boundaries

ON VIEW

26th Oct–4th Nov

SPECIALISATION

Contemporary fine Chinese &
Japanese art

BUSINESS ADDRESS

B1, No.34, Section 1
Fuxing South Road
Zhongshan District
Taipei City 104
Taiwan (R.O.C.)

EXHIBITION HOURS

Cromwell Place Lates x Asian Art in London

Fri 27th Oct 18.00–20.00

RSVP Essential for security

RSVP: info@mohailou.com

Wed 26th 11.00–19.00

Thurs 27th 11.00–20.00

Sat 28th Oct 11.00–19.00

Sun 29th Oct 11.00–16.00

Mon 30th–

Sat 4th Nov 11.00–19.00

Catalogue available



Susan Page Snuff Bottles

17 | SEE MAP PAGE 88

Daniel Crouch Rare Books
4 Bury Street, St James's
London SW1Y 6AB

Susan Page

+44 (0)20 3036 0044

+44 (0)7721 747 153

susan@snuffbottlepages.com
www.snuffbottlepages.com

EXHIBITION HOURS

Late Night Opening

Sun 29th Oct 17.00–20.00

Thurs 26th–

Fri 27th Oct 10.00–17.00

Sat 28th Oct Closed

Sun 29th Oct 17.00–20.00

Mon 30th Oct–

Fri 3rd Nov 10.00–17.00

TALK

Subject matter on blue and white snuff bottles: Tales of the Unexpected

Tues 31st Oct

15.00

RSVP:

susan@snuffbottlepages.com

EXHIBITION

Chinese Snuff Bottles

DESCRIPTION

A range of bottles from various collections, including highlights of underglaze blue and white bottles from the Fragrant Snow Collection

ON VIEW

26th Oct–3rd Nov

SPECIALISATION

Chinese Snuff Bottles made for use during the 18th and 19th centuries

BUSINESS ADDRESS

Green Park House
15 Stratton Street
London W1J 8LQ

Simon Pilling

18 | SEE MAP PAGE 89

Gallery 1, Ground floor
4 Cromwell Place, South Kensington
London SW7 2JE

Simon Pilling

+44 (0)7946 577 303

simon@simonpilling.co.uk

www.simonpilling.co.uk



EXHIBITION

Kogei no bi – The Beauty of Craft

DESCRIPTION

The Arts have long held an essential role in Japanese society - expressing values which now resonate internationally. My exhibition will showcase beautiful works by some of Japan's leading craftspeople

ON VIEW

26th Oct–1st Nov

SPECIALISATION

The arts of Japan, with a focus on 20th century & contemporary work, and a specialism in fine lacquer pieces

BUSINESS ADDRESS

PO Box 834
Rickmansworth
WD3 0RA

EXHIBITION HOURS

Cromwell Place Lates x Asian Art in London

Fri 27th Oct 18.00–20.00

RSVP Essential for security

RSVP: simon@simonpilling.co.uk

Thurs 26th Oct 11.00–19.00

Fri 27th Oct 11.00–20.00

Sat 28th Oct 11.00–19.00

Sun 29th Oct 11.00–16.00

Mon 30th Oct 11.00–19.00

Tues 31st Oct 11.00–19.00

Wed 1st Nov 11.00–16.00

TALK

Kogei no bi – The Beauty of Craft

Sat 28th Oct

12.00

RSVP: simon@simonpilling.co.uk



Priestley & Ferraro

19 | SEE MAP PAGE 88

3 Bury Street
St James's
London SW1Y 6AB
David Priestley, Alice Williamson
+44 (0)20 7930 6228
gallery@priestleyandferraro.com
www.priestleyandferraro.com



EXHIBITION HOURS

Late Night Opening

Sun 29th Oct 11.00–20.00

Thurs 19th–
Fri 20th Oct 09.30–17.30
Mon 23rd–
Fri 27th Oct 09.30–17.30
Sat 28th Oct 11.00–17.00
Sun 29th Oct 11.00–20.00
Mon 30th–
Fri 3rd Nov 09.30–17.30

TALK

Exhibition Preview Tour

Wed 25th Oct

15.00

RSVP:

gallery@priestleyandferraro.com

EXHIBITION

Chinese Ceramics and Works of Art

DESCRIPTION

Chinese works of art including ceramics, jade, lacquer, cloisonné enamel, glass and paintings

ON VIEW

26th Oct–3rd Nov

SPECIALISATION

Early Chinese Art with a focus on the ceramics of the Song dynasty

Schoeni Projects

20 | SEE MAP PAGE 89

Wing Gallery, Second floor
4 Cromwell Place, South Kensington
London SW7 2JE
Nicole Schoeni, Angel Hui
info@schoeniprojects.com
www.schoeniprojects.com



EXHIBITION

DOOR TO DOOR: Szelit Cheung and Olga Grotova

DESCRIPTION

The DOOR TO DOOR exhibition comprises new works produced as part of artist-in-residence Szelit Cheung and Olga Grotova's practice-based research project across Hong Kong and London

ON VIEW

Fri 20th Oct–Sun 5th Nov

SPECIALISATION

Schoeni Projects is a contemporary art platform believing in fluid artistic approaches for artists and art practitioners to connect, collaborate and engage in dialogue



EXHIBITION HOURS

Late Night Opening

Fri 20th Oct 18.00–20.00

RSVP Essential for security

RSVP: info@schoeniprojects.com

Cromwell Place Lates x Asian Art in London

Fri 27th Oct 18.00–20.00

RSVP Essential for security

RSVP: info@schoeniprojects.com

Fri 20th Oct 11.00–20.00

Sat 21st Oct 11.00–19.00

Sun 22nd Oct 11.00–16.00

Mon 23rd–

Thurs 26th Oct 11.00–19.00

Fri 27th Oct 11.00–20.00

Sat 28th Oct 11.00–19.00

Sun 29th Oct 11.00–16.00

Mon 30th–

Sat 4th Nov 11.00–19.00

Sun 5th Nov 11.00–16.00

TALK

DOOR TO DOOR: Szelit Cheung and Olga Grotova in conversation

Sat 21st Oct

11.00–12.30

RSVP: Free, booking essential
info@schoeniprojects.com

Emerging Dealer



EXHIBITION HOURS

Cromwell Place Lates x Asian Art in London

Fri 27th Oct 18.00–20.00

RSVP Essential for security

RSVP:

anastasia@avsjapaneseart.com

Thurs 26th Oct 11.00–19.00

Fri 27th Oct 11.00–20.00

Sat 28th Oct 11.00–19.00

Sun 29th Oct 11.00–16.00

Mon 30th Oct 11.00–19.00

Tues 31st Oct 11.00–19.00

Wed 1st Nov 11.00–16.00

Anastasia von Seibold Japanese Art

21 | SEE MAP PAGE 89

Gallery 12, Second floor
4 Cromwell Place, South Kensington
London SW7 2JE

Anastasia von Seibold

+44 (0)7966 255 250

anastasia@avsjapaneseart.com

www.avsjapaneseart.com



EXHIBITION

Japanese Woodblock Prints and Paintings 18th–20th Century

DESCRIPTION

A selection of Japanese 18th–20th century woodblock prints by iconic artists, including: Chobunsai Eishi, Utagawa Hiroshige, Utagawa Kuniyoshi and Tsukioka Yoshitoshi. A highlight is a pair of Sumiyoshi school painted hanging scrolls depicting chapters from The Tale of Genji

ON VIEW

26th Oct–1st Nov

SPECIALISATION

Japanese 18th–20th century woodblock prints, paintings, works of art and modern and contemporary Japanese art

W. SHANSHAN 珊然軒

22 | SEE MAP PAGE 88

Stern Pissarro Gallery
66 St. James's Street
London SW1A 1NE

Dr. Shanshan Wang

+44 (0)20 7126 8216

gallery@artwshanshan.com

www.artwshanshan.com



EXHIBITION

Tang: Beauty and Beast

DESCRIPTION

Dr. Shanshan Wang presents a group of rare and elegant Chinese Tang dynasty ceramics covered by different coloured glazes, which highlight their foreign origin and the impact of cultural exchange

ON VIEW

17th Oct–28th Nov

SPECIALISATION

Early Asian ceramics and sculptures

EXHIBITION HOURS

Late Night Openings

Sun 22nd Oct 10.00–20.30

Sun 29th Oct 10.00–20.30

Mon 30th Oct 10.00–20.30

Thurs 19th–

Sat 21st Oct 10.00–18.00

Sun 22nd Oct 10.00–20.30

Mon 23rd–

Sat 28th Oct 10.00–18.00

Sun 29th 10.00–20.30

Mon 30th Oct 10.00–20.30

Tues 31st Oct–

Sat 4th Nov 10.00–18.00

Emerging Dealer



TALK

Expressions of Colour: Tang vs Modern Art

Sun 22nd Oct

Sun 29th Oct

Mon 30th Oct

17.30 (followed by gallery late opening and drinks reception)

RSVP: gallery@artwshanshan.com

stem@pissarro.com

TALK

Beauty and Power of Tang

Thurs 19th Oct

Tues 24th Oct

Thurs 26th Oct

Tues 31st Oct

Thurs 2nd Nov

15.00 (light refreshment provided)

RSVP: gallery@artwshanshan.com

stem@pissarro.com

BUSINESS ADDRESS

3 Duke of York Street

St James's

London SW1Y 6JP

Catalogue available



Jacqueline Simcox Ltd

23 | SEE MAP PAGE 89

Gallery 10, Ground floor
4 Cromwell Place, South Kensington
London SW7 2JE

Jacqueline Simcox

+44 (0)7775 566 388

js@jacquelinesimcox.com
www.jacquelinesimcox.com

EXHIBITION HOURS

Cromwell Place Lates x Asian Art in London

Fri 27th Oct 18.00–20.00

RSVP Essential for security

RSVP: js@jacquelinesimcox.com

Thurs 26th Oct 11.00–18.00

Fri 27th Oct 11.00–20.00

Sat 28th Oct 11.00–19.00

Sun 29th Oct 11.00–16.00

Mon–Fri 11.00–19.00

Sat 4th Nov 11.00–19.00

Sun 5th Nov 11.00–13.00

TALK

An introduction to the exhibition

Fri 27th and Mon 30th

12.30–13.30

RSVP: js@jacquelinesimcox.com

EXHIBITION

Chinese Textiles

DESCRIPTION

A selection of rare Chinese silk tapestries, brocades and embroideries, from 13th–19th centuries and a small group of decorative panels

ON VIEW

26th Oct–5th Nov

SPECIALISATION

Chinese and Central Asian silk textiles and costumes

BUSINESS ADDRESS

54 Linton Street
Islington
London N1 7AS

Catalogue available

Runjeet Singh

24 | SEE MAP PAGE 89

Gallery 5, Cromwell House
Cromwell Place, South Kensington
London SW7 2JE

Runjeet Singh

+44 (0)7866 424 803

info@runjeetsingh.com
www.runjeetsingh.com



EXHIBITION

Arms, Armour & Works of Art from Indonesia and the Rest of Asia

DESCRIPTION

A striking group of rare and interesting objects from Indonesia and the rest of Asia, including some important discoveries that exemplify the best of their type, or are unique

ON VIEW

26th Oct–1st Nov

SPECIALISATION

Asian Arms, Armour & Works of Art

BUSINESS ADDRESS

PO Box 6778
Royal Leamington Spa
Warwickshire
CV31 9PZ

EXHIBITION HOURS

Cromwell Place Lates x Asian Art in London

Fri 27th Oct 18.00–20.00

RSVP Essential for security

RSVP: info@runjeetsingh.com

Thurs 26th Oct 11.00–18.00

Fri 27th Oct 11.00–20.00

Sat 28th Oct 11.00–19.00

Sun 29th Oct 11.00–16.00

Mon 30th Oct 11.00–19.00

Tues 31st Oct 11.00–19.00

Wed 1st Nov 11.00–16.00

TALK

Working as an Antique Dealer with Collectors, Museums and the BBC's Antiques Roadshow

Fri 27th Oct

16:00

RSVP: info@runjeetsingh.com

Catalogue available



EXHIBITION HOURS

Late Night Opening

Sat 28th Oct 10.30–20.00

Sat 28th Oct 10.30–20.00

Sun 29th Oct By appointment

Mon 30th Oct–

Sat 4th Nov 10.30–17.30

TALK

Noble Blue: The Enduring Appeal of Blue Ground Chinese Porcelain

Sat 28th Oct

19.00

RSVP: pt@jorgewelsh.com

Jorge Welsh Works of Art

25 | SEE MAP PAGE 86

116 Kensington Church Street
London W8 4BH

Jorge Welsh

+44 (0)20 7229 2140

+44 (0)7831 186 224

uk@jorgewelsh.com

www.jorgewelsh.com

EXHIBITION

Noble Blue: The Enduring Appeal of Blue Ground Chinese Porcelain

DESCRIPTION

The exhibition comprises of 104 individual pieces, with 94 illustrated and discussed in the catalogue, which includes articles by Ronald W. Fuchs II and Alexandre Morais, and explores the enduring appeal of Powder Blue and Blue Ground Chinese porcelain from the 17th, 18th and early 19th centuries

ON VIEW

28th Oct–4th Nov

SPECIALISATION

Chinese porcelain and cross-cultural works of art from Africa and Asia

Non-Exhibiting Participants

Teresa Coleman Fine Arts Ltd

Antique Chinese Textiles, Fans, Rugs and Paintings
Room 405, Yu Yuet Lai Building
55 Wyndham Street, Central, Hong Kong
tc@teresacoleman.com
www.teresacoleman.com
+852 25262450

Martyn Gregory

Pictures relating to China and the Far East
34 Bury Street
St James's
London SW1Y 6AU
info@martyngregory.com
www.martyngregory.com
+44 (0) 20 7839 3731

Lam & Co Antiquities

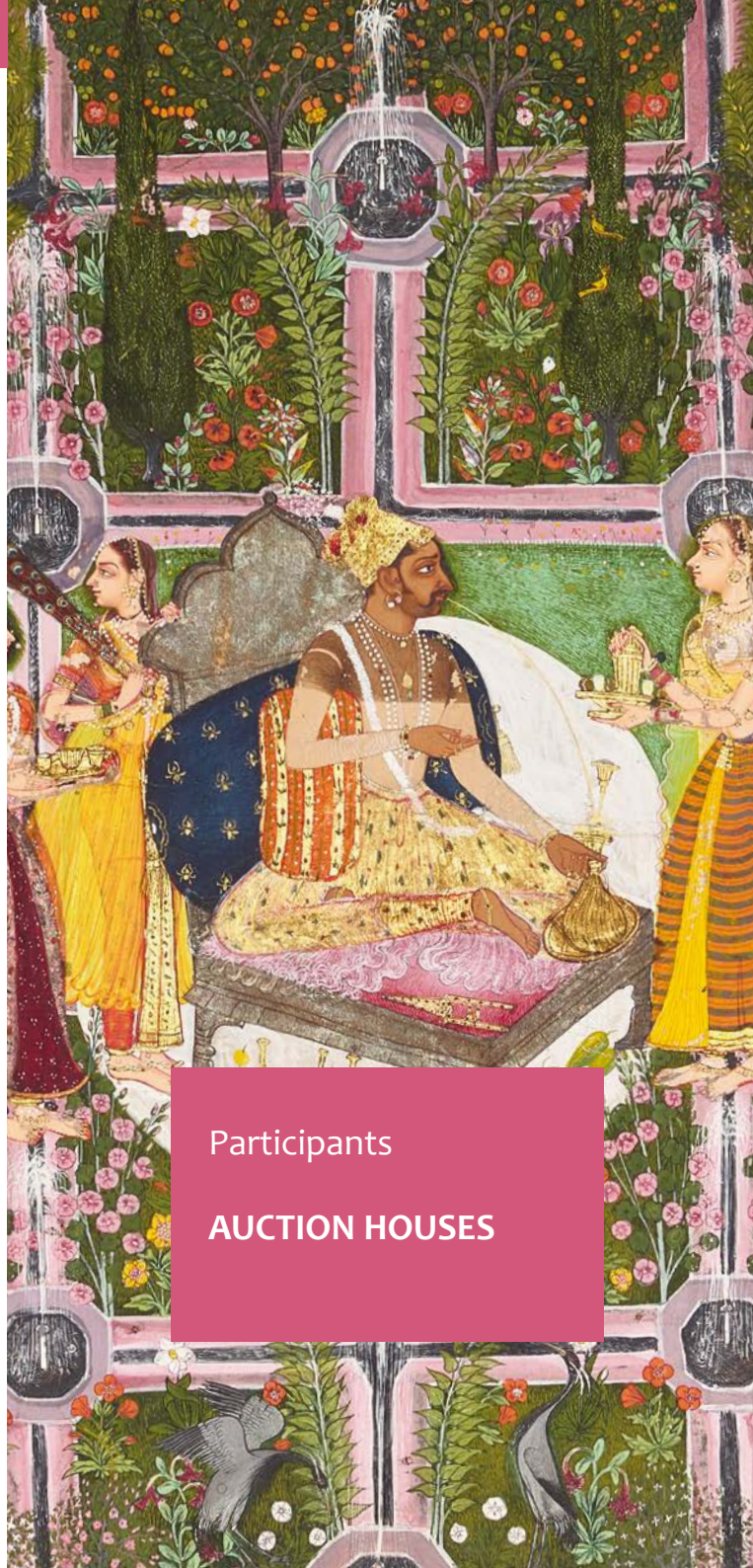
Early Ceramic, Ancient Bronze,
Early Buddhist Sculpture
2/F 151 Hollywood Road, Central, Hong Kong
chrisantiquities@gmail.com
www.lamcoantiquities.com
+852 25438877

Lam's Gallery

Chinese Art & Antiques
3C Yally Industrial Building, 6 Yip Fat Street
Wong Chuk Hang, Hong Kong
info@lams-gallery.com
www.lams-gallery.com
+852 94740066

	Auction Houses	Speciality									
26	Bonhams	M	I	S	H	C	J	K	E		
27	Bonhams Knightsbridge			S	H	C	J	K	E		
28	Chiswick Auctions	M	I			C	J			Co	
29	Christie's	M	I	S	H	C	J	K	E		
30	Dore & Rees			S		C	J				
31	Lyon & Turnbull			S		C	J	K	E	Co	
32	Roseberys			S	H	C	J			Co	
33	Sotheby's	M	I	S	H	C	J	K	E	Co	
34	Pundole's		I	S	H					Co	

- | | | | |
|----------|-------------------------------|-----------|------------------|
| M | Islamic & Middle Eastern Art | J | Japanese Art |
| I | Indian Art | K | Korean Art |
| S | Southeast Asian Art | E | Export Art |
| H | Himalayan & Central Asian Art | Co | Contemporary Art |
| C | Chinese Art | | |



Participants

AUCTION HOUSES



Bonhams

26 | SEE MAP PAGE 87

101 New Bond Street
London W1S 1SR

+44 (0)20 7447 7447

www.bonhams.com



SPECIALISATION

Chinese Art, Japanese Art, Asian Art, Indian and Islamic Art, Modern and Contemporary South Asian Art

Chinese Art Department
Asaph Hyman
+44 (0)20 7468 5888
asaph.hyman@bonhams.com

Japanese Art Department
Suzannah Yip
+44 (0)20 7468 8368
suzannah.yip@bonhams.com

Indian and Islamic Art
Oliver White
+44 (0)20 7468 8303
oliver.white@bonhams.com

Modern and Contemporary South Asian Art
Priya Singh
+44 (0)20 7468 8203
priya.singh@bonhams.com

LATE NIGHT OPENING

Mon 30th Oct 16.30–19.00

Catalogues available

Please note: all sale times and viewing times should be confirmed

AUCTION

Fine Chinese Art

Thurs 2nd Nov 15.00

AUCTION

The Marsh Collection: Art for the Literati Part II

Thurs 2nd Nov 10.00

AUCTION

The Marsh Collection: Art for the Literati (Part II) Online sale

Fri 27th Oct–Mon 6th Nov 12.00

AUCTION

Devotion: Culture, Country and Charity - Chinese Art Sold for the Benefit of a Charitable Foundation

Thurs 2nd Nov 11.30

AUCTION

Devotion: Culture, Country and Charity Chinese Art Sold for the Benefit of a Charitable Foundation Online sale

Fri 27th Oct–Tues 7th Nov 12.00

VIEWING FOR AUCTIONS ABOVE

Sat 28th–Sun 29th Oct

11.00–17.00

Mon 30th Oct 09.00–19.00

Tues 31st Oct–Wed 1st Nov

09.00–16.30

AUCTION

Fine Japanese Art

Thurs 2nd Nov 11.00

VIEWING

Sun 29th Oct 11.00–17.00

Mon 30th Oct 09.00–19.00

Tues 31st Oct–Wed 1st Nov
09.00–16.30

AUCTION

Islamic and Indian Art

Tues 14th Nov 11.00

VIEWING

Sun 12th Nov 11.00–15.00

Mon 13th Nov 09.00–16.30

AUCTION

Modern and Contemporary South Asian Art

Tues 14th Nov 13.00

VIEWING

Sat 11th–Sun 12th Nov

11.00–15.00

Mon 13th Nov 09.00–16.30

Tues 14th Nov 09.00–12.00

EXHIBITION

Lain Singh Bangdel: Mountains & Migrations

Sat 11th–Sun 12th Nov

11.00–15.00

Mon 13th–Fri 17th Nov

09.00–16.30

Mon 20th–Tues 21st Nov

09.00–16.30

AUCTION

Islamic and Indian Art Online Sale

Mon 6th–Wed 15th Nov 12.00

TALKS

Dr Edward Luper, *The Inside Story: Narratives in the Marsh Collection*

Sun 29th Oct

14.30

Sam Marsh, *An Appreciation of Chinese Export Silver*

Mon 30th Oct

15.30

CONCERT

Guqin Performance

Mon 30th Oct

18.15

Catalogues available

Please note: all sale times and viewing times should be confirmed



Bonhams Knightsbridge

27 | SEE MAP PAGE 89

Montpelier Street
Knightsbridge
London SW7 1HH
+44 (0)20 7393 3900
www.bonhams.com



SPECIALISATION

Chinese, Japanese, Southeast Asian, Himalayan and Central Asian, Korean, Export Art

Rachel Hyman
+44 (0)20 7393 3854
rachel.hyman@bonhams.com

Lazarus Halstead
+44 (0)20 3988 6385
lazarus.halstead@bonhams.com

AUCTION

Asian Art (Part I)

Mon 30th Oct 10.00

Asian Art (Part II)

Tues 31st Oct 10.00

VIEWING

Fri 27th Oct 09.00–17.00

Sat 28th Oct 11.00–17.00

Sun 29th Oct 11.00–17.00

Mon 30th Oct 09.00–17.00
(Part II only)

AUCTION

Animals of Imagination: Depicting and Reinventing Nature in Chinese Art Online sale

Tues 21st Nov–Fri 1st Dec 12.00

Catalogue available

Please note: all sale times and viewing times should be confirmed

Chiswick Auctions

28 | SEE MAP PAGE 91

The Barley Mow Centre
10 Barley Mow Passage
Chiswick W4 4PH
+44 (0)20 8992 4442
www.chiswickauctions.co.uk



AUCTION

Islamic Art–Property of a European Collector Part VI

Tues 31st Oct 11.00

AUCTION

Islamic & Indian Art

Tues 31st Oct 14.00

VIEWING FOR BOTH AUCTIONS

Sat 21st Oct 10.00–16.00

Mon 23rd–Sat 28th Oct
10.00–16.00
Mon 30th Oct 10.00–12.00

AUCTION

Asian Art I

Mon 6th Nov 10.00

AUCTION

Asian Art II

Tues 7th Nov 10.00

VIEWING FOR BOTH AUCTIONS

By appointment only:

Mon 23rd–Fri 27th Oct
10.00–16.00
Mon 30th Oct 10.00–16.00

Official view:

Tues 31st Oct 12.00–16.00
Wed 1st–Sun 5th Nov
10.00–16.00

SPECIALISATION

Chinese, Japanese, Tibetan, Korean and Southeast Asian Art alongside Middle Eastern, Islamic & Indian Art

Asian Art

Tiago Cordeiro-Soares
+44 (0)20 3089 6864
tiago.cordeiro-soares@chiswickauctions.co.uk

Islamic & Indian Art

Beatrice Campi
+44 (0)20 3089 6855
beatrice.campi@chiswickauctions.co.uk

Catalogues available

Please note: all sale times and viewing times should be confirmed



Christie's

29 | SEE MAP PAGE 88

8 King Street
St. James's
London SW1Y 6QT
+44 (0)20 7839 9060
www.christies.com



SPECIALISATION

Founded in 1766 by James Christie, the auction house holds sales for Indian & Islamic art, Rugs & Carpets, and Chinese Ceramics and Works of Art

Indian & Islamic Art
Sara Plumbly
+44 (0)20 7389 2374
splumbly@christies.com

Rugs & Carpets
Louise Broadhurst
+44 (0)20 7389 2603
lbroadhurst@christies.com

Chinese Ceramics and Works of Art
Camille de Foresta
+33 1 40 76 86 05
cdeforesta@christies.com

AUCTION

Art of the Islamic and Indian Worlds including Rugs and Carpets

Thurs 26th Oct 10.30

VIEWING

Sat 21st Oct 12.00–17.00
Sun 22nd Oct 12.00–20.00
Mon 23rd Oct–
Wed 25th Oct 09.00–17.00

EVENING VIEWING

Sun 22nd Oct 12.00–20.00

AUCTION

An Eye Enchanted: Indian Paintings from the Collection of Toby Falk

Fri 27th Oct 10.30

VIEWING

Sat 21st Oct 12.00–17.00
Sun 22nd Oct 12.00–20.00
Mon 23rd Oct–
Thurs 26th Oct 09.00–17.00

AUCTION

Art d'Asie Paris

Tues 12th Dec 10.30

HIGHLIGHTS VIEWING IN LONDON

Sat 28th Oct–
Fri 3rd Nov 9.00–16.00

BOOK LAUNCH

Four Centuries of Blue & White: The Frelinghuysen Collection of Chinese and Japanese Export Porcelain

With lecture by author Becky MacGuire followed by a panel discussion with Dr Valentina Bruccoleri and Dr Yupin Chung

Sun 29th Oct

Lecture and panel discussion

16.00-17.00

Tea and book-signing

17.00-17.30

RSVP: rsvp@christies.com

Catalogue available

Please note: all sale times and viewing times should be confirmed

Catalogue available

Please note: all sale times and viewing times should be confirmed



Dore & Rees

30 | SEE MAP PAGE 90

Asia House
63 New Cavendish St
London W1G 7LP
+44 (0)1373 462 257
www.doreandrees.com



SPECIALISATION

Led by Lee Young, Dore & Rees holds two Asian auctions a year, focusing on fine examples of Chinese, Japanese and South Asian Art

Asian Art
Lee Young
+44 (0)1373 462 257
+44 (0)7825 426 555
lee.young@doreandrees.com

AUCTION IN SOMERSET Fine Asian Art – The Anthony Lovett Collection

Mon 6th Nov 10.30

BUSINESS ADDRESS
Auction Salerooms
Vicarage Street, Frome
Somerset BA11 1PU

LONDON VIEWING
Sun 29th Oct 12.00–17.00
Mon 30th Oct 10.00–18.00
Tues 31st Oct 10.00–14.00

SOMERSET VIEWING
Fri 3rd Nov 10.00–16.00
Sat 4th Nov 10.00–16.00
Sun 5th Nov 10.00–16.00

TALK IN LONDON
In conversation with Anthony Lovett and Ivy Chan
Mon 30th Oct
14.00
lynn.strover@doreandrees.com

Catalogue available

Please note: all sale times and viewing times should be confirmed

Lyon & Turnbull

31 | SEE MAP PAGE 90

22 Connaught Street
London W2 2AF
+44 (0)20 7930 9115
www.lyonandturnbull.com



AUCTION Scholars' Aesthetics: Dr Kenneth P. Lawley's Collection of Chinese, Japanese, Korean & Southeast Asian Arts and Fine Asian & Islamic Works of Art

Fri 3rd Nov 09.00

VIEWING
Sun 29th Oct 10.00–17.00
Mon 30th Oct 10.00–19.00
Tues 31st Oct 10.00–17.00
Wed 1st Nov 10.00–17.00
Thurs 2nd Nov 10.00–17.00

SPECIALISATION

Established in Edinburgh in 1826, Lyon & Turnbull is Scotland's oldest firm of auctioneers holding regular sales of Asian art, notably Chinese

Asian
Grace Tu
+44 (0)20 7930 9115
+44 (0)7467 953 462
grace.tu@lyonandturnbull.com

Catalogue available

Please note: all sale times and viewing times should be confirmed



Roseberys

32 | SEE MAP PAGE 88, 89, 91

70–76 Knight's Hill
West Norwood
London SE27 0JD
+44 (0)20 8761 2522
www.roseberys.co.uk



SPECIALISATION

Antiquities, Chinese Art, Japanese Art, Himalayan Art, Vietnamese Art, Korean Art, Export Art, Islamic & Middle Eastern Art, Islamic & Indian Arts

Antiquities, Islamic and Indian Arts
Alice Bailey
+44 (0)20 8761 2522
alicebailey@roseberys.co.uk

Chinese, Japanese and
South East Asian Art
Bill Forrest
+44 (0)7912 719 214
billforrest@roseberys.co.uk

AUCTION

Antiquities, Islamic & Indian Arts

Mon 30th Oct 10.00

VIEWING AT 4 CROMWELL PLACE SOUTH KENSINGTON LONDON SW7 2JE

Thurs 19th Oct 12.00–18.30
Fri 20th Oct 10.00–16.00

VIEWING AT KNIGHT'S HILL SALESROOM

Tues 24th Oct 09.30–17.00
Wed 25th Oct 09.30–17.00
Thurs 26th Oct 09.30–17.00
Fri 27th Oct 09.30–17.00
Sun 29th Oct 10.00–14.00

AUCTION

Chinese, Japanese & South East Asian Works of Art

Tues 7th Nov 10.00
Wed 8th Nov 10.00

VIEWING AT

BOWMAN SCULPTURE 6 DUKE STREET, ST JAMES'S LONDON SW1Y 6BN

Sat 28th Oct 12.00–17.00
Sun 29th Oct 10.00–20.00

VIEWING AT

KNIGHT'S HILL SALESROOM

Thurs 2nd Nov 10.00–17.00
Fri 3rd Nov 10.00–17.00
Sun 5th Nov 10.00–14.00
Mon 6th Nov 10.00–17.00

TALK

Symbolism of Flowers on Chinese Art

Sun 29th Oct
16.00
RSVP: mariema@roseberys.co.uk

EVENING VIEWING

East Asian Arts
Drinks Evening
Sun 29th Oct 17.00–20.00
at Bowman Sculpture
6 Duke Street
St James's
London SW1Y 6BN

PREVIEW ADDRESSES

Islamic and Indian Arts
4 Cromwell Place
South Kensington
London SW7 2JE
Chinese, Japanese, South East Asian Art
Bowman Sculpture
6 Duke Street
St. James's
London SW1Y 6BN

Catalogue available

Please note: all sale times and viewing times should be confirmed

Catalogue available

Please note: all sale times and viewing times should be confirmed



Sotheby's

33 | SEE MAP PAGE 87

34–35 New Bond Street
London W1A 2AA

+44 (0)20 7293 5000

www.sothebys.com/en/



SPECIALISATION

Founded in 1744, Sotheby's holds auctions of important collections and examples of Chinese, Japanese, Islamic and Indian & South Asian art in London

Islamic and Indian Art

Louise Lebrun

+44 (0)20 7293 5986

+44 (0)20 7293 5755

louise.lebrun@sothebys.com

Modern and Contemporary South Asian Art

Ishrat Kanga

+44 (0)20 7293 6603

+44 (0)7971 824 842

ishrat.kanga@sothebys.com

Chinese Works of Art

Gordon Lo

+44 (0)20 7293 5371

+44 (0)20 7293 5090

gordon.lo@sothebys.com

Japanese Works of Art

Mark Hinton

+44 (0)20 7293 6537

+44 (0)20 7293 5721

mark.hinton@sothebys.com

AUCTION

Modern and Contemporary Japanese Art Online sale

Tues 24th Oct 13.00–

Tues 31st Oct 13.00

VIEWING

Sat 28th Oct 12.00–17.00

Sun 29th Oct 12.00–17.00

Mon 30th Oct 09.00–16.30

Tues 31st Oct 09.00–12.00

AUCTION

Modern and Contemporary South Asian Art

Tues 24th Oct 14.00

VIEWING

Fri 20th Oct 09.00–16.30

Sat 21st Oct 12.00–17.00

Sun 22nd Oct 12.00–17.00

Mon 23rd Oct 09.00–16.30

EXHIBITION

Masterpieces:

Sayed Haider Raza 1955 – 1985

Sat 4th–Sun 12th Nov

Weekdays 09.00–16.30

Weekends 12.00–17.00

AUCTION

The Edith & Stuart Cary Welch Collection. Part III

Wed 25th Oct 10.30

AUCTION

Arts of the Islamic World & India Incl. Fine Rugs & Carpets

Wed 25th Oct 15.00

AUCTION

The Edith & Stuart Cary Welch Collection Part IV: Online

Tues 18th Oct 14.00–

Tues 27th Oct 14.00

VIEWING FOR 3 AUCTIONS

ABOVE

Fri 20th Oct 09.00–16.30

Sat 21st Oct 12.00–17.00

Sun 22nd Oct 12.00–17.00

Mon 23rd Oct 09.00–16.30

Tues 24th Oct 09.00–13.00

AUCTION

Important Chinese Art

Wed 1st Nov 10.30

VIEWING

Sat 28th Oct 12.00–17.00

Sun 29th Oct 12.00–17.00

Mon 30th Oct 09.00–20.00

Tues 31st Oct 09.00–16.30

AUCTION

China / 5000 Years Online

Wed 1st Nov 14.00–

Wed 8th Nov 14.00

AUCTION

Japanese Woodblock Prints Online

Tues 12th Dec 14.00–

Tues 19th Dec 14.00

VIEWING

Fri 8th Dec 09.00–16.30

Sat 9th Dec 12.00–17.00

Sun 10th Dec 12.00–17.00

Mon 11th–Fri 15th Dec

09.00–16.30

Mon 18th Dec 09.00–16.30

Tues 19th Dec 09.00–16.30

TALK

OCS lecture

“Past Collectors, their Collections and the Art Market”,

A conversation between Roger

Keverne and Henry Howard-Sneyd

Mon 30th Oct

17.00–18.00

RSVP:

info@orientalceramicsociety.org.uk

EVENING VIEWING

Mon 30th Oct 17.00–20.00

Catalogues available

Please note: all sale times and viewing times should be confirmed

Catalogues available

Please note: all sale times and viewing times should be confirmed



Pundole's

34 | SEE MAP PAGE 88

6 Masons Yard
Duke St., St James's
London, SW1Y 6BU
+91 99 2002 8418
www.pundoles.com

SPECIALISATION

Indian and South Asian Art

Modern Indian Art
Rob Dean
+91 22 6114 6464
+91 9920028418
rob@pundoles.com

AUCTION IN MUMBAI

The Fine Art Sale

Thurs 7th Dec 18.30

VENUE

Pundole's
Hamilton House, Ground Floor
8 J N Heredia Marg
Ballard Estate
Mumbai 400 001

MUMBAI VIEWING

Sun 3rd–
Tues 5th Dec 11.00–18.00
Wed 6th Dec 11.00–15.00

LONDON VIEWING

Thurs 26th Oct 11.00–17.00
Fri 27th Oct 11.00–17.00
Sat 28th Oct 12.00–16.00
Sun 29th Oct 17.00–20.00
Mon 30th Oct By appointment

BUSINESS ADDRESS

Hamilton House, Ground Floor
8 J N Heredia Marg
Ballard Estate
Mumbai 400 001
India

Tuesday 18th to Tuesday 27th October

SOTHEBY'S

14.00 The Edith & Stuart Cary Welch Collection
Part IV: – Online

Tuesday 24th to Tuesday 31st October

SOTHEBY'S

13.00 Modern and Contemporary Japanese Art
Online

Tuesday 24th October

SOTHEBY'S

14.00 Modern and Contemporary South Asian Art

Wednesday 25th October

SOTHEBY'S

10.30 The Edith & Stuart Cary Welch Collection.
Part III

SOTHEBY'S

15.00 Arts of the Islamic World & India Incl.
Fine Rugs & Carpets

Thursday 26th October

CHRISTIE'S

10.30 Art of the Islamic and Indian Worlds including
Rugs and Carpets

Friday 27th October

CHRISTIE'S

10.30 An Eye Enchanted: Indian Paintings from the
Collection of Toby Falk

continued overleaf

Catalogue available

Please note: all sale times should be confirmed

Friday 27th October to Monday 6th November

BONHAMS

12.00	The Marsh Collection: Art for the Literati (Part II) – Online
-------	---

Friday 27th October to Tuesday 7th November

BONHAMS

12.00	Devotion: Culture, Country and Charity Chinese Art Sold for the Benefit of a Charitable Foundation – Online
-------	---

Monday 30th October

BONHAMS KNIGHTSBRIDGE

10.00	Asian Art (Part I)
-------	--------------------

ROSEBERYS

10.00	Antiquities, Islamic & Indian Arts
-------	------------------------------------

Tuesday 31st October

BONHAMS KNIGHTSBRIDGE

10.00	Asian Art (Part II)
-------	---------------------

CHISWICK AUCTIONS

11.00	Islamic Art – Property of a European Collector Part VI
-------	--

CHISWICK AUCTIONS

14.00	Islamic & Indian Art
-------	----------------------

Wednesday 1st to Wednesday 8th November

SOTHEBY'S

14.00	China / 5000 Years – Online
-------	-----------------------------

Wednesday 1st November

SOTHEBY'S

10.30	Important Chinese Art
-------	-----------------------

Thursday 2nd November

BONHAMS

10.00	The Marsh Collection: Art for the Literati Part II
-------	--

BONHAMS

11.00	Fine Japanese Art
-------	-------------------

BONHAMS

11.30	Devotion: Culture, Country and Charity - Chinese Art Sold for the Benefit of a Charitable Foundation
-------	--

BONHAMS

15.00	Fine Chinese Art
-------	------------------

Friday 3rd November

LYON & TURNBULL

09.00	Scholars' Aesthetics: Dr Kenneth P. Lawley's Collection of Chinese, Japanese, Korean & Southeast Asian Arts and Fine Asian & Islamic Works of Art
-------	---

Monday 6th November

CHISWICK AUCTIONS

10.00	Asian Art I
-------	-------------

DORE & REES

10.30	Fine Asian Art – The Anthony Lovett Collection
-------	--

Monday 6th to Wednesday 15th Nov

BONHAMS

12.00	Islamic and Indian Art Online Sale
-------	------------------------------------

continued overleaf

Tuesday 7th November

CHISWICK AUCTIONS

10.00 Asian Art II

ROSEBERYS

10.00 Chinese, Japanese & South East Asian Works of Art

Wednesday 8th November

ROSEBERYS

10.00 Chinese, Japanese & South East Asian Works of Art

Tuesday 14th November

BONHAMS

11.00 Islamic and Indian Art

BONHAMS

13.00 Modern and Contemporary South Asian Art

Tuesday 21st November to Friday 1st December

BONHAMS KNIGHTSBRIDGE

12.00 Animals of Imagination: Depicting and Reinventing Nature in Chinese Art – Online

Thursday 7th December

PUNDOLE'S

18.30 The Fine Art Sale, Mumbai

Tuesday 12th December

CHRISTIE'S PARIS

10.30 Art d'Asie, Paris

Tuesday 12th to Tuesday 19th December

SOTHEBY'S

14.00 Japanese Woodblock Prints – Online



Asian Collections,
Societies, etc

LONDON COLLECTIONS

The British Library

96 Euston Road
London NW1 2DB
+44 (0)843 2081144
www.bl.uk

The British Museum

Great Russell Street
London WC1B 3DG
+44 (0)20 7323 8000
www.britishmuseum.org

The Fan Museum

12 Crooms Hill
London SE10 8ER
+44 (0)20 8305 1441
www.thefanmuseum.org.uk
info@thefanmuseum.org.uk

Horniman Museum

100 London Road
Forest Hill
London SE23 3PQ
+44 (0)20 8699 1872
www.horniman.ac.uk
enquiry@horniman.ac.uk

**Museum of Croydon Riesco
Collection of Chinese Ceramics**

Croydon Clocktower
Katharine Street
Croydon CR9 1ET
+44 (0)20 8253 1022
www.museumofcroydon.com
museum@croydon.gov.uk

**National Maritime Museum
Greenwich**

London SE10 9NF
+44 (0)20 8858 4422
www.rmg.co.uk
bookings@rmg.co.uk

Royal Collection Trust

St James's Palace
St. James's
London SW1A 1BQ
+44 (0)30 3123 7300
www.rct.uk

Sir John Soane's Museum

13 Lincoln's Inn Fields
London WC2A 3BP
+44 (0)20 7405 2107
www.soane.org
admin@soane.org.uk

Victoria and Albert Museum

Cromwell Road
London SW7 2RL
+44 (0)20 7942 2000
www.vam.ac.uk

The Wallace Collection

Hertford House
Manchester Square
London W1U 3BN
+44 (0)20 7563 9500
www.wallacecollection.org
enquiries@wallacecollection.org

COLLECTIONS OUTSIDE LONDON

The Ashmolean Museum

Beaumont Street
Oxford OX1 2PH
+44 (0)1865 278 000
www.ashmolean.org
eastern-art@ashmus.ox.ac.uk

**The Barlow Collection of
Chinese Ceramics, Bronzes and
Jades**

The Ashmolean Museum
Beaumont Street
Oxford OX1 2PH
+44 (0)1865 278 000
www.ashmolean.org

**Birmingham Museum & Art
Gallery**

Chamberlain Square
Birmingham B3 3DH
+44 (0)121 348 8000
www.bmag.org.uk
hello@
birminghammuseums.org.uk

Bristol Museum and Art Gallery

Queen's Road
Bristol BS8 1RL
+44 (0)117 922 3571
www.bristolmuseums.org.
uk/bristol-museum-and-art-
gallery/
general.museum@bristol.gov.uk

The Burrell Collection

Pollok Country Park 2060
Pollokshaws Road
Glasgow G43 1AT
+44 (0)141 287 2550
burrellcollection.com/
museums@glasgowlife.org.uk

Compton Verney House Trust

Compton Verney
Warwickshire CV35 9HZ
+44 (0)1926 645 500
www.comptonverney.org.uk
info@comptonverney.org.uk

The Fitzwilliam Museum

Trumpington Street
Cambridge CB2 1RB
+44 (0)1223 332 900
www.fitzmuseum.cam.ac.uk
reception@
fitzmuseum.cam.ac.uk

**Maidstone Museum & Bentlif
Art Gallery**

St Faith's Street
Maidstone
Kent ME14 1LH
+44 (0)1622 602 838
www.museum.maidstone.gov.uk
museuminfo@maidstone.gov.uk

The Museum of East Asian Art

12 Bennett Street
Bath BA1 2QJ
+44 (0)1225 464 640
www.meaa.org.uk
info@meaa.org.uk

**National Museum of Scotland
Gallery**

Chambers Street
Edinburgh EH1 1JF
+44 (0)300 123 6789
www.nms.ac.uk
info@nms.ac.uk

Oriental Museum

University of Durham
Elvet Hill, Off South Road
Durham DH1 3TH
+44 (0)191 334 5694
www.dur.ac.uk/oriental.museum
oriental.museum@durham.ac.uk

Pitt Rivers Museum

South Parks Road
Oxford OX1 3PP
+44 (0)1865 270 927
www.prm.ox.ac.uk
prm@prm.ox.ac.uk

**Russell-Cotes Art Gallery &
Museum**

Russell Cotes Road
Bournemouth BH1 3AA
+44 (0)1202 128000
russellcotes.com/
russellcotes@bcpcouncil.gov.uk

Sainsbury Centre for Visual Arts

University of East Anglia
Norwich NR4 7TJ
+44 (0)1603 593 199
www.sainsburycentre.ac.uk/

ASIAN SOCIETIES AND CULTURAL CENTRES

Society of Antiquaries of London

Burlington House
Piccadilly London W1J 0BE
+44 (0)20 7479 7080
www.sal.org.uk
admin@sal.org.uk

Asia House

63 New Cavendish Street
London W1G 7LP
+44 (0)20 7307 5454
www.asiahouse.org
enquiries@asiahouse.co.uk

**The Bhavan Centre UK
(Institute of Indian Art and Culture)**

4a Castletown Road
London W14 9HE
+44 (0)20 7381 3086
www.bhavan.net
info@bhavan.net

The British Library (Friends)

96 Euston Road
London NW1 2DB
+44 (0)20 7412 7734
www.support.bl.uk
supporters@bl.uk

British Museum (Friends)

The British Museum
Great Russell Street
London WC1B 3DG
+44 (0)20 7323 8299
www.britishmuseum.org
friends@britishmuseum.org

China Exchange

32a Gerrard Street
London W1D 6JA
+44 (0)20 7734 1931
www.chinaexchange.uk
info@chinaexchange.uk

Centre for Chinese Contemporary Art (CFCCA)

Market Buildings, 13
Thomas Street
Manchester M4 1EU
+44 (0)161 832 7271
www.cfcca.org.uk
hello@cfcca.org.uk

The Daiwa Anglo-Japanese Foundation

Japan House
13/14 Cornwall Terrace Mews
London NW1 4QP
+44 (0)20 7486 4348
www.dajf.org.uk
office@dajf.org.uk

Museum of East Asian Art (Friends)

12 Bennett Street
Bath BA1 2QJ
+44 (0)1225 464 640
www.maaa.org.uk
info@meaa.org.uk

The Great Britain-China Centre

15 Belgrave Square
London SW1X 8PS
+44 (0)20 7235 6696
www.gbccc.org.uk
contact@gbccc.org.uk

Indian Art Circle

SOAS, University of London
Thornhaugh Street
Russell Square
London WC1H 0XG
+44 (0)20 7637 2388
www.soas.ac.uk
indianartcircle.london@gmail.com

International Netsuke Society

European Chapter
PO Box 2281
Woodford Green
London IG7 5YP
www.netsuke.org/
mvargashandle@outlook.com

Iran Heritage Foundation

SOAS University of London
Thornhaugh Street
London WC1H 0XG
UK+44 (0)20 7493 4766
www.iranheritage.org/
info@iranheritage.org

The Iran Society

16 Old Queen Street
London SW1H 9HP
+44 (0)20 7235 5122
www.iransociety.org
info@iransociety.org

Islamic Art Circle (SOAS)

Brookfields Swerford
Chipping Norton
Oxfordshire OX7 4BG
+44 (0)7714087480
rosalindhaddon@gmail.com

The Japan Society

13/14 Cornwall Terrace
London NW1 4QP
+44 (0)20 7935 0475
www.japansociety.org.uk
info@japansociety.org.uk

Korean Cultural Centre UK

Ground Floor, Grand Buildings
1-3 Strand
London WC2N 5BW
+44 (0)20 7004 2600
kccuk.org.uk/en/
info@kccuk.org.uk

The Nehru Centre

8 South Audley Street
London W1K 1HF
+44 (0) 2074 932 019
www.nehrucentre.org.uk

Oriental Ceramic Society

PO Box 77859
London SW20 2GB
+44 (0)7546 026 338
www.orientalceramicsociety.org.uk/
info@orientalceramicsociety.org.uk

Oriental Museum (Friends)

University of Durham
Elvet Hill, Durham DH1 3TH
+44 (0)191 334 5694
www.dur.ac.uk/oriental.museum/
whatson/events/friends/
fomdurham@fastmail.co.uk

Oriental Rug and Textile Society

Moon's End
Hook Norton
Oxfordshire OX15 5NQ
orientalrugandtextilesociety.org.uk
membership.orts@gmail.com

Royal Asiatic Society

14 Stephenson Way
London NW1 2HD
+44 (0)20 7388 4539
www.royalasiaticsociety.org
info@royalasiaticsociety.org

Royal Society for Asian Affairs

16 Old Queen Street
London SW1H 9HP
+44 (0)20 7235 5122
info@rsaa.org.uk
www.rsaa.org.uk
Library and archive accessible by prior appointment.

Sainsbury Institute for the Study of Japanese Arts and Cultures

64 The Close
Norwich NR1 4DH
+44 (0)1603 597507
www.sainsbury-institute.org
sisjac@sainsbury-institute.org

SOAS University of London

SOAS University of London
University of London
Thornhaugh Street
Russell Square
London WC1H 0XG
+44 (0)20 7637 2388
www.soas.ac.uk

SOAS-AlphaWood Postgraduate Diploma in Asian Art, SOAS University of London

+44 (0)20 7898 4451
www.AsianArtDiploma.co.uk
asianart@soas.ac.uk

Victoria and Albert Museum (Friends)

Cromwell Road
London SW7 2RL
+44 (0)20 7942 2271
www.vam.ac.uk/membership
membership@vam.ac.uk

OTHER COLLECTIONS WHICH INCLUDE ASIAN ART

Ascott House

Estate Office, Wing
Near Leighton Buzzard
Bedfordshire LU7 0PR
+44 (0)1296 688 242
www.ascottestate.co.uk
info@ascottestate.co.uk

Chiddingstone Castle

Hill Hoath Road
Chiddingstone
Near Edenbridge
Kent TN8 7AD
+44 (0)1892 870 347
www.chiddingstonecastle.org.uk
hello@chiddingstonecastle.org.uk

Kedleston Hall

Quarndon
Derby
Derbyshire DE22 5JH
+44 (0)1332 842 191
www.nationaltrust.org.uk/kedleston-hall
kedlestonhall@nationaltrust.org.uk

Powis Castle

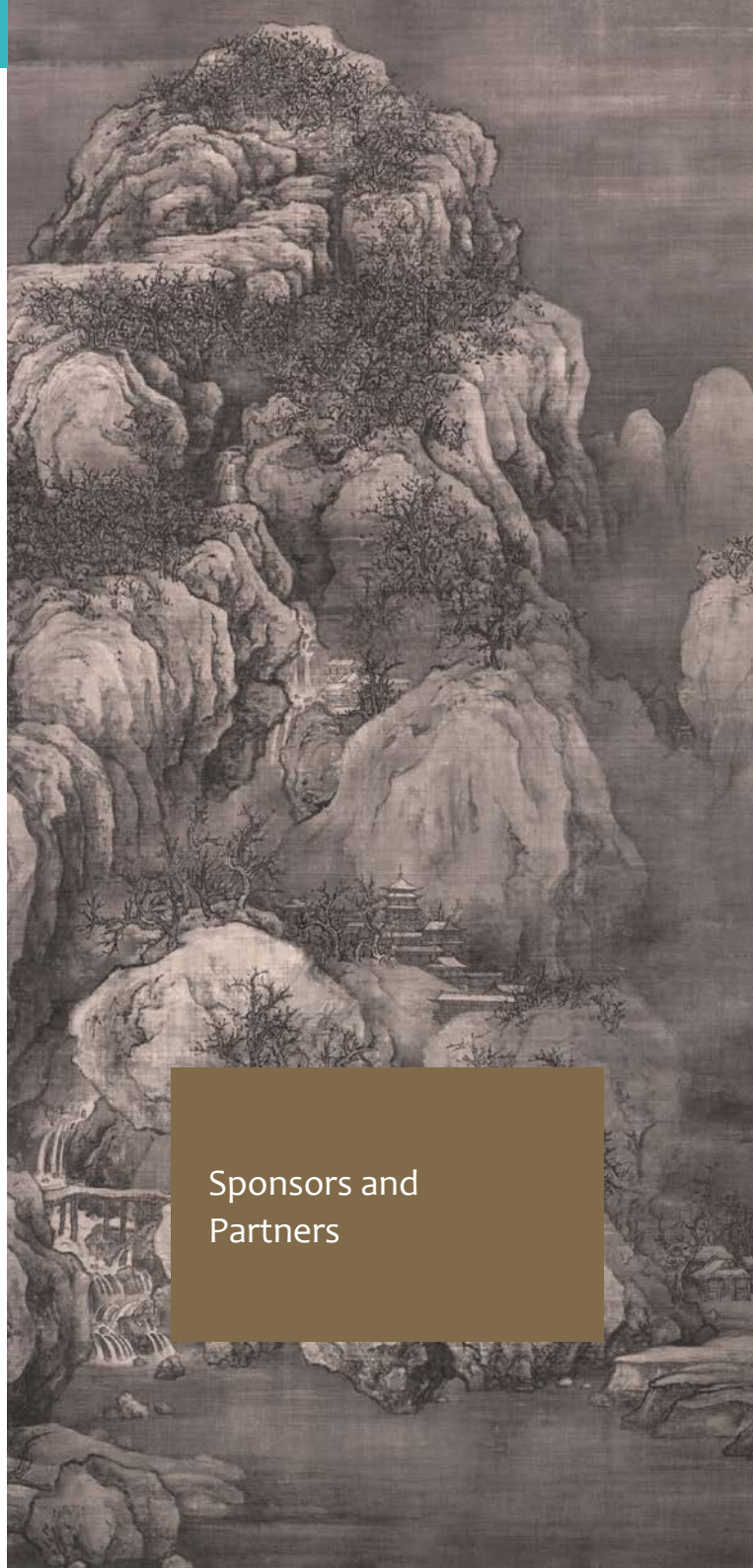
Welshpool
Powys
Wales SY21 8RF
+44 (0)1938 551 944
www.nationaltrust.org.uk/powis-castle
powiscastle@nationaltrust.org.uk

Sherborne Castle

New Road Sherborne
Dorset DT9 5NR
+44 (0) 1935 813182
www.sherbornecastle.com
castleoffice@sherbornecastle.com

Waddesdon Manor

Near Aylesbury
Buckinghamshire HP18 0JH
+44 (0)1296 820414
www.waddesdon.org.uk
enquiries@waddesdon.org.uk



Sponsors and
Partners

Essential art & antiques coverage

Antiques Trade
gazette
The Art Market Weekly

ISSUE 2589 | 22 April 2023 | £4.99



Reverse appeal reflects export mirror's condition



This 18th century Chinese export reverse-painted mirror painting in a period gilt frame sold for £37,000 (plus 24% buyer's premium) at Hampshire firm Lynton's Auctions on March 30-31. Measuring 211 x 216 (83 x 85cm), it was in exceptional condition with only minor imperfections.

It came for sale from a family home in Lynton where it had hung for over 80 years. Several phone bidders competed for it well past the £10,000-15,000 estimate, with one winning bid. Lynton's Auctions, owned by vintage toy specialist Nick Power and his son James Power, is based in the building where George Kidner had an auction.

Tributes paid to prolific author Judith Miller

Antiques expert, author and Antiques Roadshow stalwart Judith Miller has died after a short illness.

Born in Glasgow in the Scottish borders in 1951, she wrote more than 100 books on the subject of antiques and co-founded the Miller's Antique Price Guide, with her first husband Martin Miller, in 1979. She had recently been working on the forthcoming edition.

Continued on page 5

Too much VAT charged on imports from EU

By Laura Charters

Collectors and dealers say they are being incorrectly charged for import VAT by eBay and logistics providers such as DHL. Refunds are hard to claim once a mistake is made, they told ATG.

Since January 2021, works of art, collectors'

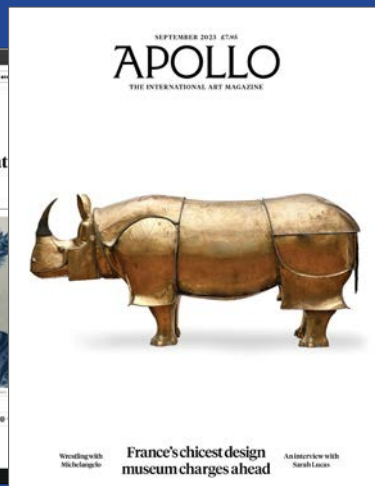


Get a
12 week
subscription
for just
£1

antiquestradegazette.com/subscribe

ANTIQUES TRADE
gazette
THE ART MARKET WEEKLY

The art of seeing clearly



Try your first year
of Apollo with 40% off
for the best writing about art, incisive
commentary and exclusive reviews

Subscribe here:
www.apollo-magazine.com/FAIRS23



Complete Digital Archive

Subscribe to the complete archive of *Arts of Asia*
spanning over 50 years with more than 300 issues
from the first 1971 edition to the current



As part of our commitment to offer you an informative publication combining academic and commercial aspects of Asian art, we have digitalised our complete archive from our first 1971 issue to the current edition. Subscriptions to this archive—an invaluable research tool with more than 300 text searchable issues—and purchasable digital back issues are now available.

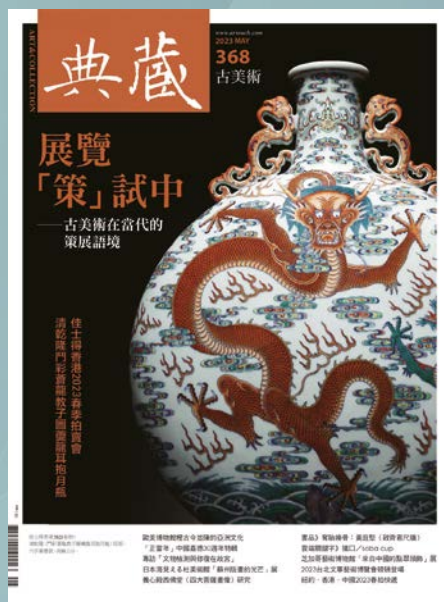
With a fresh look and updated functionalities, our new website features visually captivating pages that will surely delight all audiences. We invite you to explore www.artsofasia.com.

Scan to visit



Enquiries
Tel: 852-2376-2228
E-mail:
info@artsofasia.com

典藏 古美術
ART & COLLECTION



Art & Collection
Monthly magazine since 1992

An authoritative source of information
on varied aspects of the arts of Asia



Facebook



artouch.com



WeChat

6F., No. 85, Sec. 1, Zhongshan N. Rd., Zhongshan Dist.,
Taipei City 104, Taiwan (R.O.C.)
+886-2-25602220#300

ASHMOLEAN
MUSEUM
OXFORD



ASIAN ART

THE NEWSPAPER FOR COLLECTORS, DEALERS, MUSEUMS AND GALLERIES

Asian Art Newspaper publishes a relaxed mix of news, features, and reviews to give readers a snapshot of what is happening each month in the Asian and Islamic art world.

*Annual digital subscription £35
Print subscriptions start from £55*

FANG LIJUN PORTRAITS AND PORCELAIN

UNTIL 14 APR

FREE ADMISSION
ashmolean.org



It's easy to subscribe online at
asianartnewspaper.com

info@asianartnewspaper.com



Image © Fang Lijun

How trade,
faith and empire
shaped a country

The British
Museum

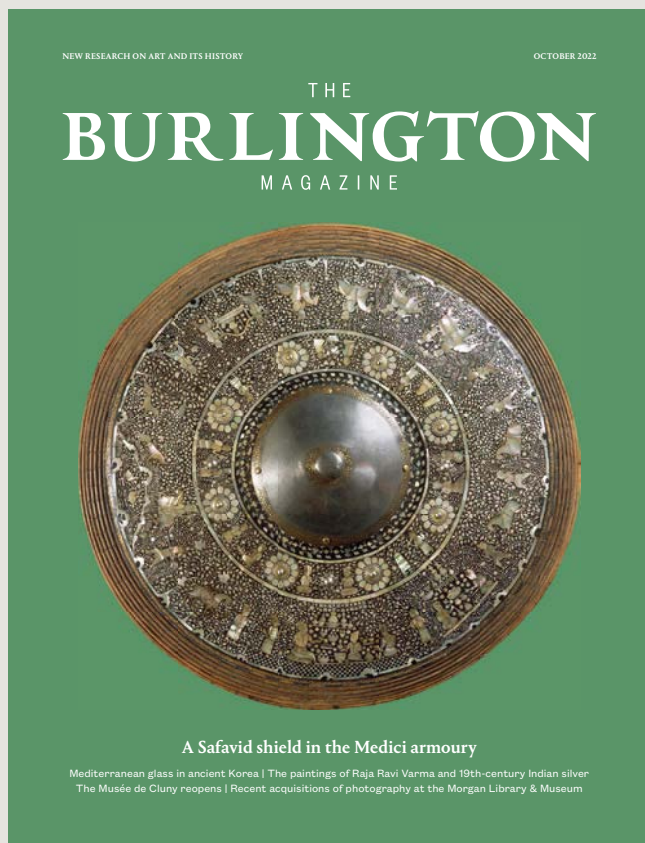
Burma to Myanmar

2 November 2023 –
11 February 2024

Members/under 16s free

Supported by
Zemen Paulos and Jack Ryan

Book
now



ASIAN AND ISLAMIC ART
SPECIAL ISSUE EVERY OCTOBER

30% off for new subscribers

Visit our website for more information

shop.burlington.org.uk

Terms and Conditions apply. This offer is applicable for new subscribers and for the first year only.
For more information on our full pricing list and range of subscription packages available,
please visit: shop.burlington.org.uk/subscriptions

CANS



cansarts.com



CROMWELL PLACE

*Be inspired at Cromwell Place,
immerse yourself in art,
with free entry
to all exhibitions.*



Images for ARTS AT CROMWELL PLACE in association with Turner Contemporary, London. © 2022. All rights reserved. Cromwell Place is a Grade II listed building. All other trademarks and registered trademarks are the property of their respective owners. All rights reserved.

With 14 gallery spaces across five Grade II listed townhouses, there is always so much to discover.

FIND OUT MORE:



WHERE CLASSIC AND
CONTEMPORARY CONVERGE

05.10 — 08.10 2023

FINE
ART
ASIA

HK CONVENTION & EXHIBITION CENTRE 香港會議展覽中心

HALI

*The magazine for
extraordinary
antique rugs and
world textiles*

LIMITED TIME ONLY

**20% discount on all print
and digital subscriptions**

Subscribe, renew or extend
your subscription

Use code

HALICOVER20

at shop.hali.com





JAPAN HOUSE
LONDON

Encounter Japan in London



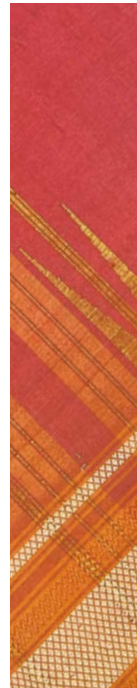
Exhibitions · Events
The Shop · The Stand · AKIRA Restaurant

101-111 Kensington High Street, W8 5SA
japanhouselondon.uk

Marg

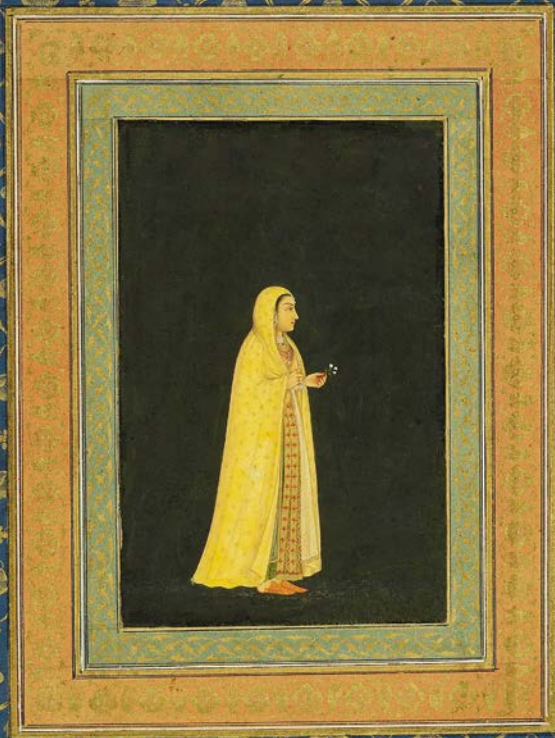
FROM 75 YEARS OF MARG

Readings ON THE TEMPLE TEXTILES DANCE MODERNISM



Order/Subscribe at www.marg-art.org





BEYOND THE PAGE

South Asian Miniature Painting and Britain, 1600 to Now

7 October 2023 – 28 January 2024
Book tickets at mkgallery.org



The Box

Image: Royal Collection Trust / © His Majesty King Charles III 2023

ORIENTATIONS

Orientations is a bimonthly magazine published in Hong Kong since 1969 and distributed worldwide. It is an authoritative source of information on the many and varied aspects of the arts of East and Southeast Asia, the Himalayas, the Indian subcontinent, and the Middle East, from the latest scholarly research to market analysis and current news. We bring readers stories of interesting people, amazing places, and incredible art collections.



Now available in both print and digital,
Orientations is an essential addition to any library.

1 year (6 issues)

US\$105 (overseas surface mail)

US\$155 (overseas airmail)

2 years (12 issues)

US\$198 (overseas surface mail)

US\$298 (overseas airmail)

Digital subscriptions: 1 year- US\$59.99

OM PUBLISHING

OM Publishing is the book-publishing arm of **Orientations Magazine Ltd.** with expertise from five decades of editing, designing and printing *Orientations* to the highest of standards. Created in collaboration with some of the most respected authors in the field, our titles are important sources of information for curators, scholars, students and art lovers alike.

Please contact us at info@orientations.com.hk for all your publishing needs.



www.ompublishinghk.com

Unit 1501, 15/F, M Place,
No. 54 Wong Chuk Hang Road, HK
T: +852 2511 1368 F: +852 2507 4620

La revista del coleccionista



www.tendenciasdelarte.com



SPONSORS

ANTIQUES TRADE
gazette
THE ART MARKET WEEKLY

APOLLO
THE INTERNATIONAL ART MAGAZINE

MUSEUM PARTNERS

ASHMOLEAN

The **British
Museum**

**BRITISH
LIBRARY**

The
Fitzwilliam
Museum
CAMBRIDGE

V&A

**THE
COURTAULD
Institute of Art**

**ROYAL
COLLECTION
TRUST**



**THE
WALLACE
COLLECTION**

MEDIA PARTNERS

Arts of Asia



典藏 藝術家庭
ART & COLLECTION GROUP

ASIAN ART
THE MONTHLY FOR COLLECTORS, DEALERS, MUSEUMS AND GALLERIES
www.asianartnewspaper.com



THE
BURLINGTON
MAGAZINE



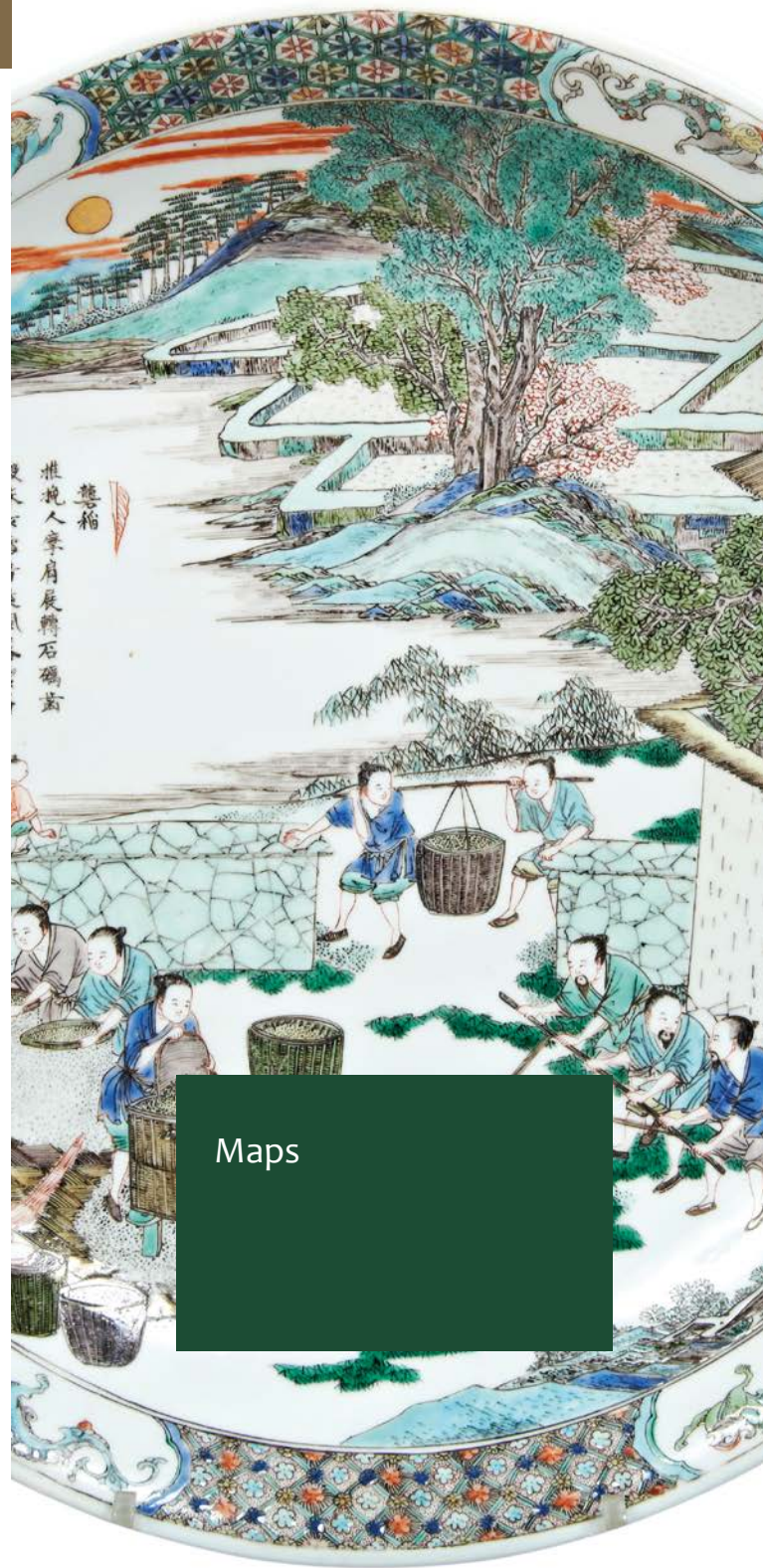
FINE
ART
ASIA

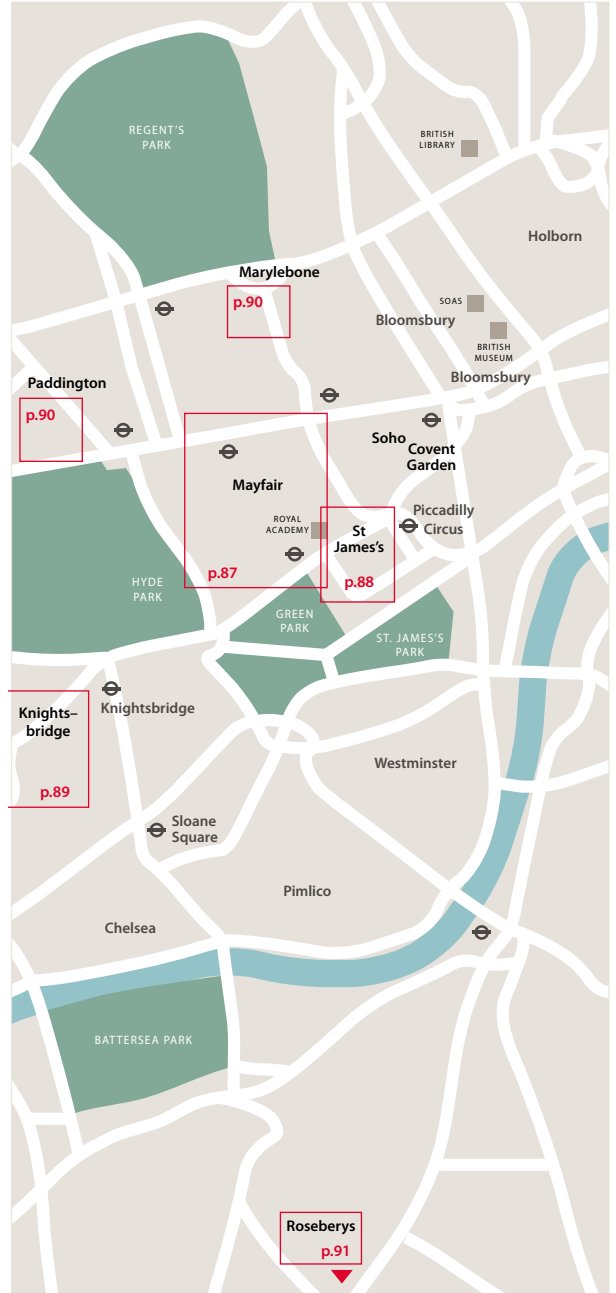
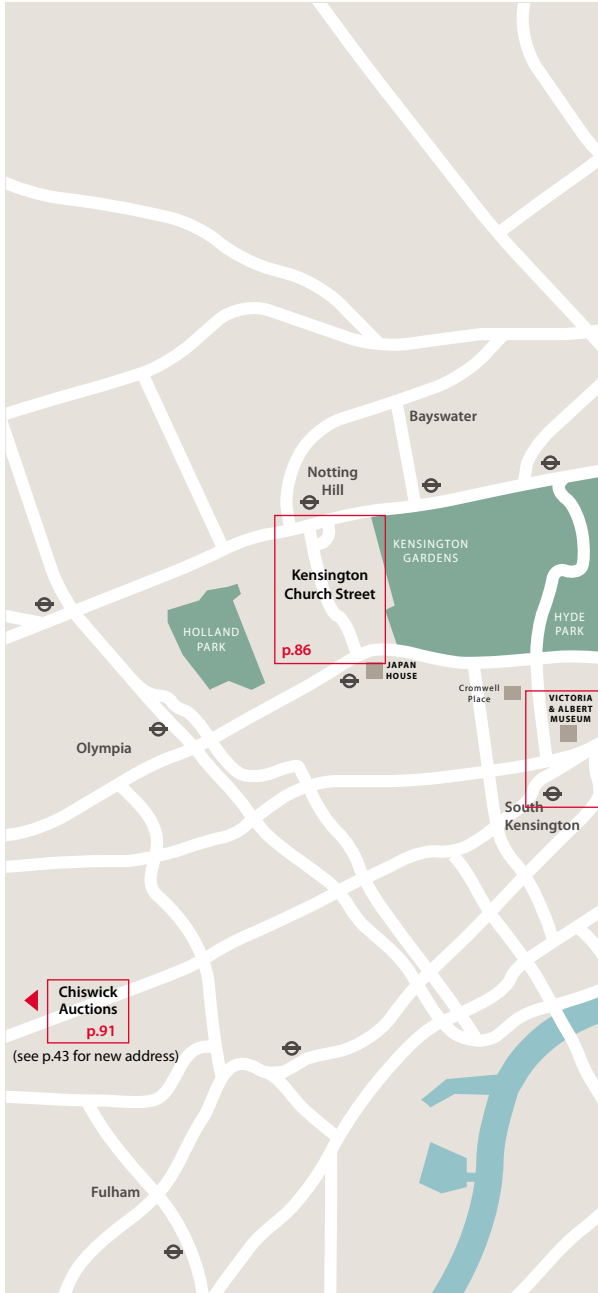
HALI

Ming

ORIENTATIONS
The magazine for collectors and enthusiasts of Asian art

Tendencias
del Mercado del Arte





Kensington Church Street



Kensington Church Street late night opening, Saturday 28th October 17.00–20.00, or 20.30 (opening times may vary, please check individual participant entries for details).

MAP ABOVE

- 5 Kamal Bakhshi (late opening by appointment)
- 11 J.A.N. Fine Art
- 15 Marchant
- 25 Jorge Welsh Works of Art

Mayfair



Mayfair late night opening, Monday 30th October.

MAP ABOVE

- 7 Eskenazi Ltd (17.00–20.00)
- 26 Bonhams (16.30–19.00)
- 33 Sotheby's (17.00–20.00)
Oriental Ceramic Society lecture (17.00–18.00)

St James's



St James's late night opening, Sunday 22nd & 29th October, 17.00–20.00 (opening times may vary, please check individual participant entries for details).

MAP ABOVE

- 1 3812 Gallery (late opening 27th, 29th & 30th Oct)
- 6 Rob Dean Art
- 9 Grosvenor Gallery (Fine Arts) Ltd
- 13 Lam & Co UK (no late night opening)
- 14 Littleton & Hennessy
- 17 Susan Page Snuff Bottles
- 19 Priestley & Ferraro
- 22 W. Shanshan 珊然軒 (late opening 22nd, 29th & 30th Oct)
- 29 Christie's (late opening 22nd Oct)
- 32 Roseberys (East Asian viewing)
- 34 Pundole's

Knightsbridge & South Kensington



Knightsbridge and South Kensington late night opening, Cromwell Place: Friday 27th October, 18.00–20.00. RSVP to individual participants essential for security at Cromwell Place (opening times may vary, please check individual participant entries for details).

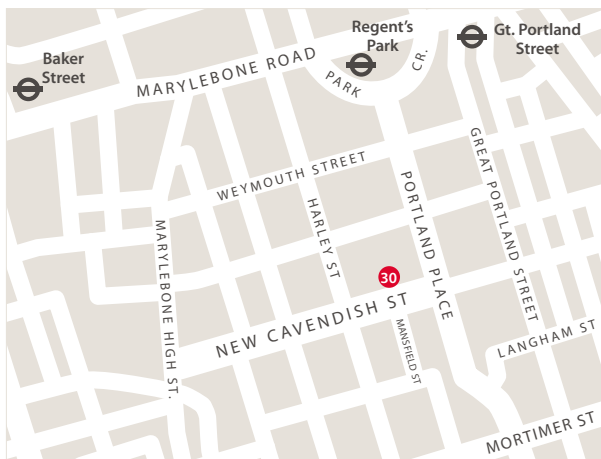
MAP ABOVE

- | | |
|--|---|
| 2 Alisan Fine Arts | 18 Simon Pilling |
| 3 Anrad Gallery
(Late opening 20 th Oct) | 20 Schoeni Projects
(Late opening 20 th & 27 th Oct) |
| 4 ArtChina | 21 Anastasia von Seibold |
| 8 Michael Goedhuis* | 23 Jacqueline Simcox Ltd |
| 10 Hanga Ten | 24 Runjeet Singh |
| 12 Katie Jones | 27 Bonhams Knightsbridge** |
| 16 Mo Hai Lou 墨海樓 | 32 Roseberys**
(Indian & Islamic viewing) |

* late opening 24th & 25th until 21.00

** no late opening

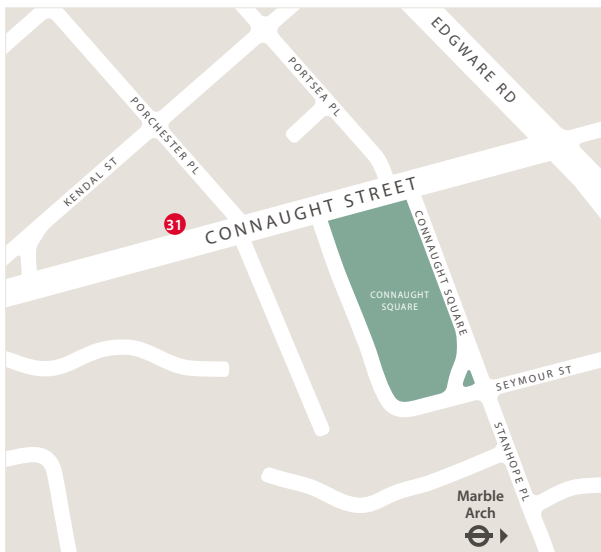
Marylebone



MAP ABOVE

30 Dore and Rees

Paddington



Paddington late night opening, Monday 30th October until 19.00.

MAP ABOVE

31 Lyon & Turnbull

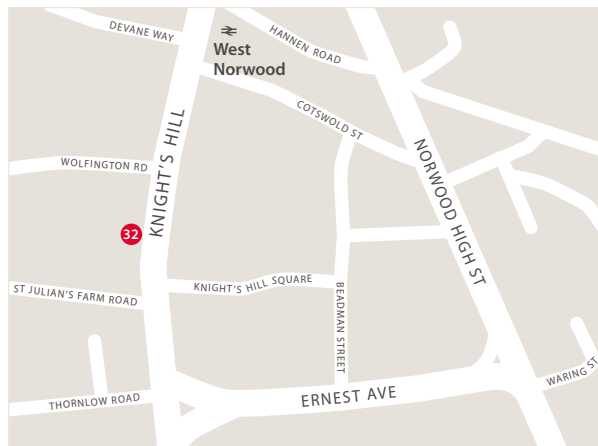
Chiswick



MAP ABOVE

28 Chiswick Auctions

West Norwood



MAP ABOVE

32 Roseberys



facebook.com/asianartinlondon



[@AsianArtLondon](https://twitter.com/AsianArtLondon)



[@asianartinlondon](https://instagram.com/asianartinlondon)



Asian Art in London
(Office address only)
21 John Street
London WC1N 2BF

+44 (0)7388 863 976
info@asianartinlondon.com
www.asianartinlondon.com

Henry Howard-Sneyd Chairman & Director

Jon Adjetey Director

Behnaz Atighi Moghaddam Director

Rob Dean Director

Rachel Hyman Director

Simon Pilling Director

Nicole Schoeni Director

Jacqueline Simcox Director

Runjeet Singh Director

Mark Slaats Director

Alice Williamson Director

Sophie Kempson Programme
Development Director



ASIAN ART
IN LONDON

Asian Art in London
+44 (0)7388 863 976
info@asianartinlondon.com
www.asianartinlondon.com