



TWENTY-FIVE YEARS

## Asian Art in London

Indian & Islamic Art: 20 – 29 October

East Asian Art: 27 October – 5 November

# Contents

## Events

- 3 Introduction
- 4 Launch Evenings
- 5 Gala Party
- 6 The Art of Collecting: Japan

## Participants: Dealers and Galleries

- 8 Participant Specialities
- 10 Dealers and Galleries
- 43 Overseas Participants

## Participants: Auction Houses

- 47 Participant Specialities
- 48 Auction Houses
- 61 Auction Dates

## Asian Collections, Societies, etc

- 66 Asian Collections in London
- 67 Asian Collections Outside London
- 68 Asian Societies and Cultural Centres
- 70 Other Asian Collections

## 72 Sponsors and Partners

## 90 Maps

The contents of this guide are believed to be correct at the time of printing. Nevertheless, the authors, publishers and Directors of Asian Art in London shall not be liable for loss or harm of any kind which may arise or result from any errors, inaccuracies or omissions.



The milestone **25th anniversary** edition of **Asian Art in London** takes place from **20th October – 5th November 2022**.

**From 20th – 29th October the focus is on Indian & Islamic Art.**

**From 27th October – 5th November the focus is on East Asian Art.**

Please see the colour key at the bottom of each Participant's page, which indicates in which section they are participating.

For the very latest updates, please visit:  
**[www.asianartinlondon.com](http://www.asianartinlondon.com)**

第二十五届里程碑纪念版的伦敦亚洲艺术周将于2022年10月20日至11月5日举行。本年度的盛事分为两个板块，包括10月20日 - 10月29日的印度与伊斯兰艺术板块，以及10月27日 - 11月5日的东亚艺术板块。

请参考各个参展商页面底端的彩色标记，分别注明了他们参与的不同板块。

欲知最新内容，请登陆官方网站查询：  
**[www.asianartinlondon.com](http://www.asianartinlondon.com)**

**Asian Art in London**  
+44 (0)7388 863 976  
[info@asianartinlondon.com](mailto:info@asianartinlondon.com)  
**[www.asianartinlondon.com](http://www.asianartinlondon.com)**

## Launch Evenings

Participating Dealers, Galleries and Auction Houses are delighted to invite you to the new Launch Evenings.

At the time of writing, the following Participants will take part in the Launch Evenings, but please check the **Asian Art in London** website for the latest information and please note that opening times will vary.  
**www.asianartinlondon.com**

### INDIAN & ISLAMIC LAUNCH EVENING

Thursday 20th October 17.00 onwards

Joost van den Bergh | Rob Dean Art | Peter Finer | Grosvenor Gallery | Jonathan Hope | Schoeni Projects | Shahnaz Gallery | Shapero Rare Books | Jacqueline Simcox Ltd | Runjeet Singh | David Thatcher Samurai Art | W. Shanshan 珊然軒

### EAST ASIAN LAUNCH EVENING

Thursday 27th October 17.00 onwards

Eskenazi Ltd | Peter Finer | Martyn Gregory | Hanga Ten | Jonathan Hope | JAN Fine Art | Littleton & Hennessy | Marchant | Simon Pilling | Priestley & Ferraro | SA Fine Arts | Schoeni Projects | Anastasia von Seibold Japanese Art | Shahnaz Gallery | Jacqueline Simcox Ltd | Runjeet Singh | David Thatcher Samurai Art | W. Shanshan 珊然軒 | Jorge Welsh Works of Art

## Events

For an up-to-date calendar of events, please visit: **www.asianartinlondon.com/calendar/**

## 25th Anniversary Gala Party

To celebrate the 25th Anniversary of **Asian Art in London**, a Gala Party will be held in the Dome of the Victoria and Albert Museum, together with a Private View of their exhibition *Hallyu! The Korean Wave*.

The Directors of **Asian Art in London** hope you will join our Participants, the directors and curators from museums worldwide, academic specialists, visitors and collectors to celebrate this year's very special event.

### DATE

Wednesday 26th October 19.00-21.30  
Champagne & canapés

### VENUE

The Victoria and Albert Museum  
Cromwell Road, London SW7 2RL

### PRICE

Tickets: £100 inc. VAT  
Tickets available from Eventbrite at:  
<https://www.eventbrite.com/e/asian-art-in-london-25th-anniversary-gala-party-tickets-412178836997>

Please note:

Admission by pre-booked ticket only.  
Tickets are non-refundable and strictly non-transferrable.





# The Art of Collecting: Japan

Monday 24 October – Sunday 20 November 2022

Enjoy a display of treasured objects from selected Asian Art in London Participants, complemented by an evening talk exploring cultures of collecting, collections and collectors in the world of Japanese art and design.

## DISPLAY

Monday – Saturday: 10:00–20:00 | Sundays: 12:00–18:00

Ground Floor, Japan House London

Drop-in | Admission Free

Exhibitors: Kamal Bakhshi Modern Asian Art; Rosemary Bandini Ltd; Joost van den Bergh; Hanga Ten; JAN Fine Art; Simon Pilling; Anastasia von Seibold Japanese Art; David Thatcher Samurai Art; Tsukimi Gallery

## TALK

Collecting, Collections and Collectors

Wednesday 2 November 18:30–19:30

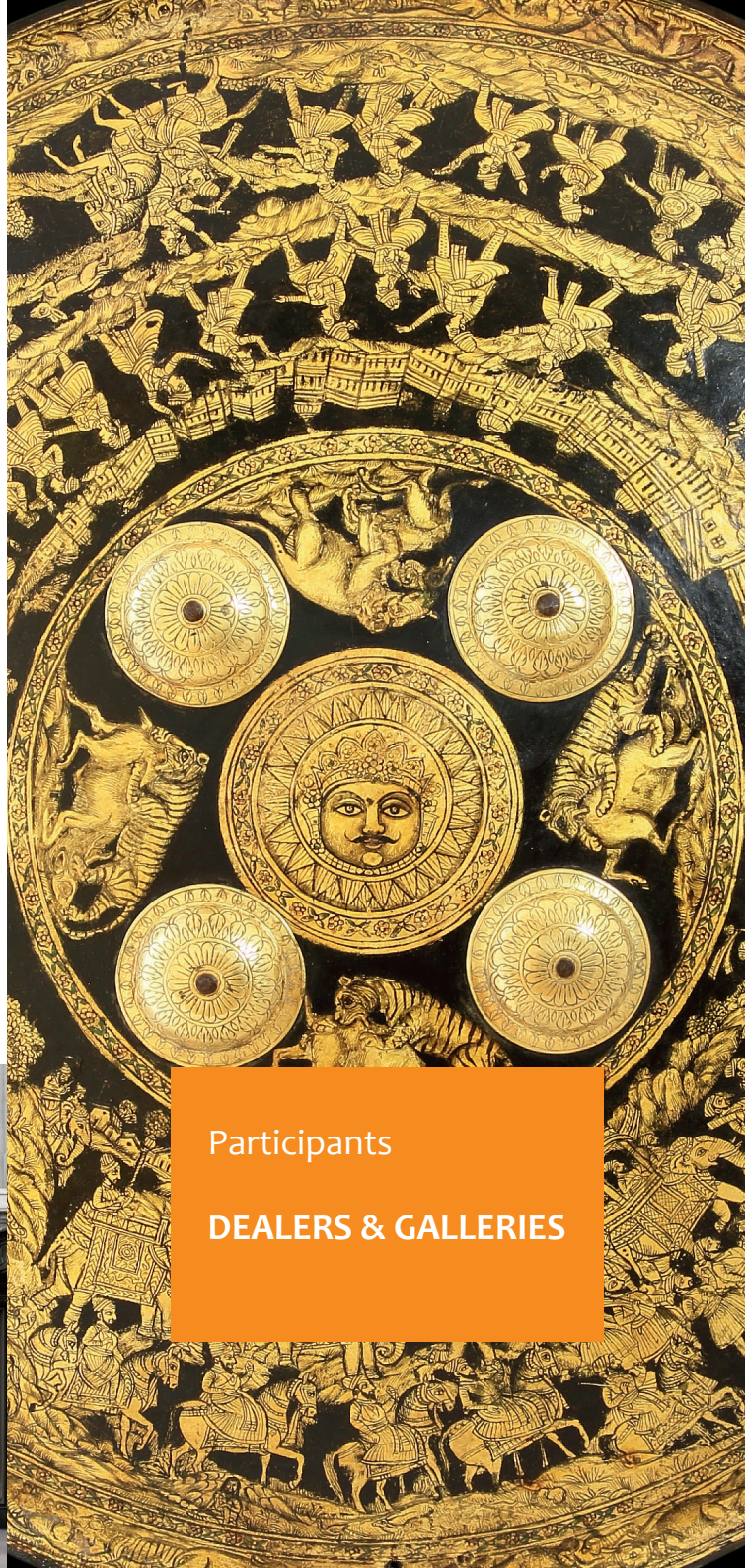
The Hall, Japan House London

Booking Essential | Admission Free

For more information and to book for the talk please scan the QR code or visit [japanhouselondon.uk](https://japanhouselondon.uk)

📍 101–111 Kensington High Street, W8 5SA

☎ +44 20 3972 7100



Participants

**DEALERS & GALLERIES**

	Dealers	Speciality									
1	Alisan Fine Arts		S	C					Co		
2	Raquette Azran Vietnamese Contemporary Fine Art		S						Co	V	
3	Kamal Bakhshi Modern Asian Art				J				Co		
4	Rosemary Bandini Ltd				J						
5	Joost van den Bergh		I	S	H	J			Co		
6	Rob Dean Art		I		H						
7	Eskenazi Ltd				C				Co		
8	John Eskenazi Ltd		I	S	H						
9	Peter Finer	M	I	S	H	C	J	K	E		V
10	Michael Goedhuis					C			Co		
11	Martyn Gregory					C			E		
12	Grosvenor Gallery (Fine Arts) Ltd		I						Co		
13	Hanga Ten					J			Co		
14	Jonathan Hope		I	S							
15	J.A.N. Fine Art	M		S	H	C	J	K			
16	Lam & Co UK					C					
17	Littleton & Hennessy Asian Art					C					
18	Marchant					C	J		E		
19	Susan Page Snuff Bottles					C					
20	Simon Pilling						J		Co		
21	Priestley & Ferraro					C		K			
22	SA Fine Arts		I						Co		
23	Schoeni Projects					C	J		Co		
24	Anastasia Von Seibold Japanese Arts						J		Co		
25	Shahnaz Gallery	M	I	S	H	C	J				

	Dealers	Speciality									
26	Shapero Rare Books	M									
27	Jacqueline Simcox Ltd				H	C					
28	Runjeet Singh	M	I	S	H	C	J	K			
29	David Thatcher Samurai Art						J				
30	Tsukimi Gallery						J				
31	W. Shanshan 珊珊軒	M	I				C	J	K		
32	Jorge Welsh Works of Art		I	S			C	J		E	
33	Zhi Zhi Arts Club						C				

- M

Islamic & Middle Eastern Art
- I

Indian Art
- S

Southeast Asian Art
- H

Himalayan & Central Asian Art
- C

Chinese Art
- J

Japanese Art
- K

Korean Art
- E

Export Art
- Co

Contemporary Art
- V

Vietnamese Art



**EXHIBITION HOURS**

Mon 31st Oct	17.00-20.00
Tues 1st Nov	10.00-20.00
Wed - Sat	10.00-18.00
Sun 6th Nov	11.00-16.00

**TALK**

**Daily guided tours**  
1st - 6th November  
**11.00**

**Alisan Fine Arts**

1 | SEE MAP PAGE 95

Gallery 7, Ground floor  
4 Cromwell Place, South Kensington  
London SW7 2JE

Pansy Chiu

+852-25261091  
+852-93889913

pchiu@alisan.com.hk  
www.alisan.com.hk

**EXHIBITION****Contemporary Chinese Art****DESCRIPTION**

Showcasing the creations by 7 Chinese contemporary artists whose works reach beyond the boundaries of Eastern and Western cultures and traverse ancient and modern times

**ON VIEW**

31st October – 6th November

**SPECIALISATION**

Chinese diaspora, established and emerging Chinese artists with a focus on ink art

**BUSINESS ADDRESS**

21/F Lyndhurst Tower  
1 Lyndhurst Terrace  
Central  
Hong Kong

**Raquelle Azran**  
**Vietnamese**  
**Contemporary Fine Art**

2 | SEE MAP PAGE 94

Riverwide House, 6 Masons Yard  
St. James's, London SW1Y 6BU

Raquelle Azran

+44 (0)20 7930 3839  
+44 (0)7552 871 521

Whatsapp +972 50 301 8889  
raquelle.azran@gmail.com  
www.artnet.com/razran.html

**EXHIBITION****Mekong Memories: From Indochine to Vietnam****DESCRIPTION**

Paintings from the French Indochine period (1920s) through modern and contemporary Vietnamese fine art

**ON VIEW**

28th October – 6th November

**SPECIALISATION**

Vietnamese contemporary fine art

**BUSINESS ADDRESS**

320 East 57th street  
New York  
NY 10022  
USA

**EXHIBITION HOURS**

Fri 28th Oct - Sun 6th Nov  
11.00-18.30

**TALK**

**Vietnamese art in your home:**  
**private consultation by**  
**appointment**

Daily  
**16.00**

Catalogue available

Catalogue available online



## Kamal Bakhshi Modern Asian Art

3

Kensington  
London W8 7BY

Kamal Bakhshi

+44 (0)20 7937 9868

kamal@kamalbakhshi.co.uk

kamalbakhshi.co.uk



### EXHIBITION HOURS

Thurs 27th Oct - Sat 5th Nov  
By appointment  
10.00-17.00 daily

### RELATED EVENT

At Japan House (see page 6)

### EXHIBITION

#### Tōkō Shinoda – Master of brush and ink

### DESCRIPTION

Master of brush and ink and its expression on paper, Tōkō Shinoda explores the Japanese aesthetic of negative to its fullest manifestation as abstraction. Join us this autumn to experience one of Europe's largest collections of the Japanese artist's work

### ON VIEW

27th October – 5th November

### SPECIALISATION

Specialists in modern and contemporary Asian fine art and prints

## Rosemary Bandini Ltd

4 | SEE MAP PAGE 92

Japan House  
101-111 Kensington High Street  
London W8 5SA

Rosemary Bandini

+44 (0)7968 182 292

netsuke@rosemarybandini.com

www.rosemarybandini.com



### EXHIBITION

#### The Art of Collecting: Japan

### DESCRIPTION

A selection of netsuke, kiseruzutsu and works of art will be available for sale at Japan House (see page 6)

### ON VIEW

24th October – 20th November

### SPECIALISATION

Japanese Netsuke, Inro and Sagemono and Lacquerware

### BUSINESS ADDRESS

PO Box 2281  
Woodford Green  
IG7 5YP

### EXHIBITION HOURS

Mon - Sat	10.00-20.00
Sundays	12.00-18.00

### TALK

#### Collectors, Collecting and Collections

Wed 2nd Nov

**18.00-20.00**

at Japan House

Ticketed event, contact

sophie@asianartinlondon.com  
for details

Catalogue available online





## Joost van den Bergh

5 | SEE MAP PAGE 94

One Princes Place, Duke Street  
St James's, London SW1Y 6DE

Joost van den Bergh

+44 (0)20 7839 8200

+44 (0)7768 038 384

post@joostvandenbergh.com

www.joostvandenbergh.com



### EXHIBITION HOURS

#### Launch Evening

Thurs 20th 10.00-20.00

Mon - Fri 10.00-18.00

Saturdays 12.00-17.00

Sundays 14.00-16.00

### RELATED EVENT

At Japan House (see page 6)

### EXHIBITIONS

#### Nicola Durvasula: Recent Work

#### Japanese design from the Showa Period

### DESCRIPTION

Nicola Durvasula's work, makes multiple references to South Asian culture, including Miniature Painting and Indian temple sculpture as well as Eastern philosophy; elements she has juxtaposed within a Western aesthetic tradition

### ON VIEW

20th October – 5th November

After by appointment

### SPECIALISATION

Indian, SEA and Japanese Art

## Rob Dean Art

6 | SEE MAP PAGE 94

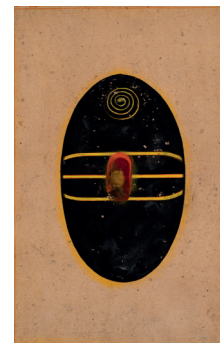
Grosvenor Gallery  
35 Bury Street, St James's  
London SW1Y 6AY

Rob Dean

+44 (0)7764 942 306

rob@robdeanart.com

www.robdeanart.com



### EXHIBITION

#### From Tantra to Tribal

### DESCRIPTION

An exploration into the influences of Tantric and Tribal art on 20th Century Modern Indian art practices and the renewed interest in these themes amongst contemporary artists from the region and elsewhere

### ON VIEW

20th – 28th October

### SPECIALISATION

Modern and classical Indian Art

### BUSINESS ADDRESS

1 The Street, Woolpit  
Bury St Edmunds  
Suffolk IP30 9SA

### EXHIBITION HOURS

#### Launch Evening

Thurs 20th 10.00-20.00

Mon - Fri 10.00-17.00

Sat 12.00-16.00

Sun Closed



## Eskenazi Ltd

7 | SEE MAP PAGE 93

10 Clifford Street  
Mayfair  
London W1S 2LJ

Daniel Eskenazi, Sarah Wong

+44 (0)20 7493 5464

gallery@eskenazi.co.uk  
www.eskenazi.co.uk



## John Eskenazi

8

By appointment only  
PO Box 55621  
London W9 2XA

John Eskenazi

+44 (0)20 7409 3001

info@john-eskenazi.com  
www.john-eskenazi.com



### EXHIBITION HOURS

#### Launch Evening

Thurs 27th Oct	09.30-20.00
Mon - Fri	09.30-17.30
Sat 29th Oct	10.00-17.00
Sun 30th Oct	10.00-17.00
Sat 5th Nov	10.00-17.00

### EXHIBITION

**50 years of exhibitions: five masterpieces on loan from a private family collection**

#### DESCRIPTION

Loan exhibition of five master works

#### ON VIEW

27th October 2022 –  
3rd February 2023

#### SPECIALISATION

Chinese works of art

### EXHIBITION

#### Latest Acquisitions

#### DESCRIPTION

Hindu and Buddhist sculptures in bronze, stone and terracotta

#### ON VIEW

12th October – 5th November  
By appointment only

#### SPECIALISATION

Indian, Gandharan, Himalayan and Southeast Asian sculptures

### EXHIBITION HOURS

Wed 12th Oct - Sat 5th Nov  
By appointment

#### TALK

#### Latest Acquisitions

Thurs 27th Oct  
14.30

Catalogue available



## Peter Finer

9 | SEE MAP PAGE 94

Redmond Finer  
38-39 Duke Street  
St James's  
London SW1Y 6DF

Redmond Finer  
+44 (0)20 7839 5666  
gallery@peterfiner.com  
www.peterfiner.com

### EXHIBITION HOURS

#### Launch Evenings

Thurs 20th	10.00-20.00
Thurs 27th	10.00-20.00
Mon - Fri	10.00-18.00
Sat & Sun	By appointment

### EXHIBITION

#### Recent acquisitions of Eastern Arms and Armour

#### ON VIEW

20th October – 5th November

#### SPECIALISATION

Arms and Armour from around the World

## Michael Goedhuis

10 | SEE MAP PAGE 95

4 Cromwell Place  
South Kensington  
London SW7 2JE

Michael Goedhuis, Libby Fischer  
+44 (0)20 7823 1395  
+44 (0)7760 625 375  
london@michaelgoedhuis.com  
www.michaelgoedhuis.com



### EXHIBITION

#### The Chinese World of Ink

#### DESCRIPTION

Exhibition of Chinese and Japanese contemporary ink paintings and antique works of art describing the inter-relationship between the two cultures and their mutually reinforcing enrichment over the past 1000 years

#### ON VIEW

1st – 6th November

#### SPECIALISATION

Chinese contemporary, later and archeological Chinese bronzes, and Japanese contemporary and young western contemporary

#### BUSINESS ADDRESS

Flat 3  
61 Cadogan Square  
London SW1X 0HZ



### EXHIBITION HOURS

Tues	18.00-21.00
Wed - Sat	10.00-18.00
Sun	12.00-16.00

#### TALK

#### Chinese contemporary ink painting Now

Wed 2nd Nov

11.00

Fri 4th Nov

14.00



Martyn Gregory

11 | SEE MAP PAGE 94

34 Bury Street  
St James's  
London SW1Y 6AU  
+44 (0)20 7839 3731  
info@martyngregory.com  
www.martyngregory.com

Grosvenor Gallery  
(Fine Arts) Limited

12 | SEE MAP PAGE 94

35 Bury Street  
St. James's  
London SW1Y 6AU  
Conor Macklin, Charles Moore,  
Kajoli Khanna  
+44 (0)20 7484 7979  
art@grosvenorgallery.com  
www.grosvenorgallery.com



EXHIBITION HOURS

Launch Evening

Thurs 27th	10.00-20.00
Fri - Tues	10.00-18.00

EXHIBITION

The Art of the China Trade

DESCRIPTION

An exhibition of China Trade paintings and topographical pictures relating to China and the far east by eastern and western artists

ON VIEW

27th October – 1st November

SPECIALISATION

Specialists in pictures relating to China and the Far East

EXHIBITION

From Tantra to Tribal

DESCRIPTION

The exhibition will focus on an exploration of the influences of Tantric and Tribal Art on Mid Century Modern Indian art practices and the renewed interest in these themes amongst contemporary artists from South Asia

ON VIEW

20th – 28th October

SPECIALISATION

Modern and Contemporary South Asian Art

EXHIBITION HOURS

Launch Evening

Thurs 20th	10.00-20.00
Mon - Fri	10.00-17.00
Sat	12.00-16.00
Sun	Closed

Catalogue available





Hanga Ten

13 | SEE MAP PAGE 94

Gallery 8  
8 Duke Street, St. James's  
London SW1Y 6BN  
Chiko Nara  
+44 (0)7788 458 201  
japaneseprints@hangaten.com  
www.hangaten.com

Jonathan Hope

14 | SEE MAP PAGE 93

Shapero Rare Books Ltd  
105 New Bond Street, Mayfair  
London W1S 1DN  
Jonathan Hope  
+44 (0)20 7581 5023  
+44 (0)7711 961 937  
jonathan.glenhope@virginmedia.com  
www.jonathanhope.com



EXHIBITION HOURS

Launch Evening

Thurs 27th	17.00-20.00
Mon - Sat	11.00-18.00
Sun	11.00-17.00
Fri 4th	11.00-17.00

TALK

Short Introduction to the Current  
Exhibition “Flowers for 25 x 25”  
Daily; Limited to 6 people  
11.00 – 11.15 am

RELATED EVENT

At Japan House (see page 6)

EXHIBITION

FLOWERS for 25 x 25

DESCRIPTION

Celebrating the 25th anniversary  
of Asian Art in London as well as  
the 25th anniversary of Hanga  
Ten’s establishment, with images  
of Flowers by our artists including  
Nana Shiomi, Joel Stewart,  
Kazuyuki Ohtsu, Hajime Namiki,  
Kazutoshi Sugiura and Katsunori  
Hamanishi

ON VIEW

27th October – 4th November

SPECIALISATION

Contemporary Japanese Prints and  
Paintings

BUSINESS ADDRESS

By appointment only  
PO Box 67812  
London SW7 9BL

EXHIBITION

From India to Indonesia

DESCRIPTION

A selection of Southeast Asian  
and Indian textiles in harmony  
with a group of Southeast Asian  
ethnographic sculptures and  
objects

ON VIEW

20th October – 5th November

SPECIALISATION

Rare textiles, ethnographic and  
Asian art

BUSINESS ADDRESS

By appointment only  
Kensington  
London

EXHIBITION HOURS

Launch Evenings

Thurs 20th	10.00-20.00
Thurs 27th	10.00-20.00
Mon - Sat	10.00-18.00
Sun	11.00-17.00
Sat 5th	10.00-13.00

TALKS

Southeast Asian Textiles and  
Animist Sculptures  
Mon 24th & Mon 31st Oct  
11.45 am

Digital catalogue available

Catalogue available



J.A.N. Fine Art

15 | SEE MAP PAGE 92

132-134 Kensington Church Street  
London W8 4BH

Kikue Shimizu, Adam Shimizu

+44 (0)20 7792 0736

+44 (0)7703 989 724

info@jan-fineart-london.com

www.jan-fineart-london.com

Lam & Co UK

16 | SEE MAP PAGE 94

4 Masons Yard  
St James's  
London SW1Y 6BU

Rex Lam

gallery@lamcouk.com

www.lamcouk.com



EXHIBITION HOURS

Launch Evening

Thurs 27th 10.00-20.00

Mon - Fri 10.00-18.00

Sat 29th 11.00-16.00

Other Saturdays By appointment

Sundays Closed

RELATED EVENT

At Japan House (see page 6)

EXHIBITIONS

Indian and Islamic Ceramics  
and Textiles

Oriental Lacquerwares

DESCRIPTION

Indian and Islamic Ceramics and  
Textiles: An exhibition showcasing  
ceramics and textiles from this  
region, including Oriental export  
porcelain made for the Islamic  
market.

Oriental Lacquerwares: An  
exhibition of Oriental lacquerwares  
from Japan, China, Korea and  
South East Asia

ON VIEW

20th October – 5th November

SPECIALISATION

Chinese, Japanese, Korean,  
Himalayan and Southeast Asian  
Ceramics and Works of Art along  
with Indian and Islamic Textiles

EXHIBITION

Forest, Earth and Sky:  
The Poetry of Sancai

ON VIEW

27th October – 5th November

SPECIALISATION

Chinese Works of Art

EXHIBITION HOURS

Mon - Fri 11.00-18.00

Sat & Sun By appointment



## Littleton & Hennessy Asian Art

17 | SEE MAP PAGE 94

1 Princes Place  
Duke Street, St. James's  
London SW1Y 6DE

Mark Slaats

+44 (0)20 7930 0888

+44 (0)7717 825 828

mark@littletonandhennessy.com  
www.littletonandhennessy.com

### EXHIBITION HOURS

#### Launch Evening

Thurs 27th 10.00-20.00

Mon - Fri 10.00-17.00

Sat & Sun 12.00-17.00

### TALK

#### Inside the Chinese scholar's studio

Mon 31st Oct

15.00

### EXHIBITION

#### Chinese Ceramics & Works of Art

### DESCRIPTION

Showcasing a select group of  
Chinese ceramics and works of art  
from private collections

### ON VIEW

27th October – 4th November

### SPECIALISATION

Chinese Works of Art and  
Scholars' Objects

### ACCESS

Property currently under  
scaffolding but is open for business

Catalogue available

## Marchant

18 | SEE MAP PAGE 92

120 Kensington Church Street  
London W8 4BH

Samuel Marchant, Stuart Marchant,  
Richard Marchant

+44 (0)20 7229 5319

+44 (0)20 7229 3770

gallery@marchantasianart.com  
www.marchantasianart.com



### EXHIBITION

#### Chinese Ceramics Tang to Song

### DESCRIPTION

Forty-three pieces of specially  
selected ceramics from the Tang –  
Song period, many with impeccable  
provenance, and with comparable  
examples in several major  
museums. A hardback catalogue to  
accompany the exhibition

### ON VIEW

24th October – 11th November

### SPECIALISATION

Chinese Ceramics, Ming and Qing  
Imperial Porcelain, Kangxi Wares,  
Jade, Cloisonné and Works of Art

### EXHIBITION HOURS

#### Launch Evening

Thurs 27th 10.30-19.00

Mon - Fri 10.30-17.30

Weekends By appointment

### TALK

#### Chinese Ceramics Tang to Song

Fri 28th

14.30 – 15.30

Catalogue available



## Susan Page Snuff Bottles

19 | SEE MAP PAGE 94

Daniel Crouch Rare Books  
4 Bury Street, St James's  
London SW1Y 6AB

Susan Page

+44 (0)203 036 0044

+44 (0)7721 747 153

susan@snuffbottlepages.com

www.snuffbottlepages.com

### EXHIBITION HOURS

Tues - Sat 10.00-17.00

### TALK

**Highlights from the Golden  
Autumn Collection**

Wed 2nd November

12.00

### EXHIBITION

**Highlights from The Golden  
Autumn Collection of Chinese  
Snuff Bottles**

### DESCRIPTION

Highlights from a European  
Collection of Chinese Snuff Bottles  
formed between 1970-2020

### ON VIEW

1st – 5th November

### SPECIALISATION

Snuff bottles made for use during  
the 18th and 19th centuries

### BUSINESS ADDRESS

Green Park House  
15 Stratton Street  
London W1J 8LQ  
By appointment only

## Simon Pilling

20 | SEE MAP PAGE 94

Gallery 8

8 Duke Street, St James's  
London SW1Y 6BN

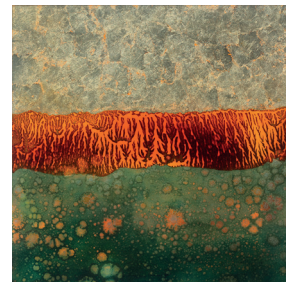
Simon Pilling

+44 (0)1923 285 929

+44 (0)7946 577 303

simon@simonpilling.co.uk

www.simonpilling.co.uk



### EXHIBITION Reflection

### DESCRIPTION

The brilliant, glowing, finishes  
achieved by Japanese lacquer  
artists have long captivated the  
West – creating mirror-like surfaces  
whose reflections draw the viewer  
into the infinite space between  
light and shadow

### ON VIEW

27th October – 4th November

### SPECIALISATION

The arts of Japan, with 20th  
century & contemporary focus,  
specialising in fine lacquer

### BUSINESS ADDRESS

PO Box 834  
Rickmansworth  
WD3 0RA

### EXHIBITION HOURS

#### Launch Evening

Thurs 27th 17.00-20.00

Mon - Sat 11.00-18.00

Sun 11.00-17.00

Fri 4th 11.00-17.00

### RELATED EVENT

At Japan House (see page 6)

### TALK

#### Gallery Talk – Reflection

Daily; free, maximum 8 people

12.00 – 12.30

#### Collectors, Collecting and Collections

Wed 2nd November

18.00-19.30

at Japan House

101-111 Kensington High Street

London W8 5SA

Speakers: Rosemary Bandini,  
Simon Pilling and Masami Yamada  
(Curator, Asian dept., V&A)

Ticketed event, contact

sophie@asianartinlondon.com  
for details

Catalogue available

Catalogue available





## Priestley & Ferraro

21 | SEE MAP PAGE 94

3 Bury Street  
St James's  
London SW1Y 6AB

David Priestley, Alice Williamson  
+44 (0)20 7930 6228  
gallery@priestleyandferraro.com  
www.priestleyandferraro.com



### EXHIBITION HOURS

#### Launch Evening

Thurs 27th 09.30-20.00  
Mon - Fri 09.30-17.30  
Sat 29th & 11.00-17.00  
Sun 30th Oct

### TALK

#### Exhibition Preview Tour

Wed 26th Oct  
15.00

### EXHIBITION

#### Early Chinese and Korean Ceramics and Works of Art

### DESCRIPTION

Song dynasty and Korean Goryeo dynasty ceramics, Tang pottery and stone sculpture, early hardstone carvings and Qing dynasty glass

### ON VIEW

27th October – 4th November

### SPECIALISATION

Early Chinese art, with a focus on the ceramics of the Song dynasty

## S.A. Fine Arts

22 | SEE MAP PAGE 95

Gallery 12, 4 Cromwell Place  
South Kensington  
London SW7 2JE

Ms. Sangeeta Ahuja  
+44 (0)20 3715 7458  
+44 (0)7985 078 670  
sangeeta.ahuja@safinearts.com  
www.safinearts.com



### EXHIBITION

#### TAT TVAM ASI – “You exist in everything, and the universe exists within you”

### DESCRIPTION

Solo show by Seema Kohli presenting paintings, drawings, sculptures, etchings and serigraphs based on the theme of ‘Shakti’, bringing to light the intricate connections of divine energies in our body and the universe

### ON VIEW

26th October – 5th November

### SPECIALISATION

Contemporary Indian Art

### BUSINESS ADDRESS

10 Clifton Gardens, Flat 1  
London NW11 7EL



### EXHIBITION HOURS

#### Launch Evening

Thurs 27th 10.00-21.00

Mondays By appointment  
Tues - Sat 10.00-18.00  
Sundays 10.00-16.00

### TALK

#### Performance by Seema Kohli at The Royal Academy of Arts

Wed 2nd Nov

13.00 – 15.00

Rsvp:

sangeeta.ahuja@safinearts.com

Catalogue available

Catalogue available

Emerging Dealer



Schoeni Projects

23 | SEE MAP PAGE 95

Wing Gallery, 2/F Cromwell Place  
4 Cromwell Place  
South Kensington  
London SW7 2JE  
info@schoeniprojects.com  
www.schoeniprojects.com



Anastasia von Seibold  
Japanese Art

24 | SEE MAP PAGE 95

4 Cromwell Place  
South Kensington  
London SW7 2JE  
Anastasia von Seibold  
+44 (0)7966 255 250  
anastasia@avsjapaneseart.com  
www.avsjapaneseart.com



EXHIBITION HOURS

Launch Evenings

Thurs 20th	17.00-20.00
Thurs 27th	17.00-20.00
Monday	Closed
Tuesday	By appointment
Wed - Sat	10.00-18.00
Sundays	10.00-16.00

TALK

In Conversation: Artists' Talk with  
Tanabe Chikuunsai IV & Sawako  
Kaijima and Kensuke Koike

Sat 22nd Oct  
11.00-12.30

EXHIBITION

de/re CONSTRUCT: an  
exhibition by Tanabe  
Chikuunsai IV & Sawako  
Kaijima and Kensuke Koike

DESCRIPTION

The exhibition features works  
by Tanabe Chikuunsai IV &  
Sawako Kaijima and Kensuke  
Koike who explore themes of  
deconstructing the past, and the  
use of technology to reconstruct  
them into contemporary visual  
artworks. It celebrates the artists'  
craftsmanship and multidisciplinary  
art forms with the goal to inspire  
dialogue and creative exchange

ON VIEW

Preview: 20th October 17.00-20.00  
21st October – 6th November

SPECIALISATION

Schoeni Projects is a contemporary  
art platform promoting talent and  
celebrating cross-cultural exchange  
in unique environments

EXHIBITION

Japanese Prints and Rare  
Books from a Distinguished  
Private Collection; and Other  
Works of Art

DESCRIPTION

Anastasia von Seibold Japanese  
Art will present a selection of  
woodblock prints and works of art

ON VIEW

26th October – 6th November

SPECIALISATION

Japanese prints, works of art  
and modern and contemporary  
Japanese art

ACCESS

Gallery is on the ground floor, but  
there are some steps up to the  
front door

EXHIBITION HOURS

Launch Evening

Thurs 27th	17.00-20.00
------------	-------------

Cromwell Place VIP evening

Fri 4th Nov	18.00-21.00
-------------	-------------

Mon	Closed
Tues	By appointment
Wed - Fri	10.00-18.00
Sat & Sun	10.00-16.00

RELATED EVENT

At Japan House (see page 6)



### Shahnaz Gallery

25 | SEE MAP PAGE 92

101 Kensington Church Street  
London W8 7LN  
Shahnaz Atlas  
+44 (0)20 7792 0330  
+44 (0)7903 022 669  
info@shahnazgallery.com  
www.shahnazgallery.com

### Shapero Rare Books

26 | SEE MAP PAGE 93

105 New Bond Street  
London W1S 1DN  
Jeffrey Kerr  
+44 (0)20 7493 0876  
rarebooks@shapero.com  
www.shapero.com



#### EXHIBITION HOURS

##### Launch Evening

Thurs 20th	18.00-20.00
Mon - Fri	10.30-17.00
Sat & Sun	By appointment

#### TALK

##### Gallery Handling Session

Thurs 3rd Nov  
12:00

#### EXHIBITION

##### Important Works of Islamic & Asian Art

#### ON VIEW

20th October – 4th November

#### SPECIALISATION

Rare and Important Islamic, South Asian and East Asian Works of Art

#### EXHIBITION

##### The Islamic World in Manuscript and Print

#### ON VIEW

20th – 29th October

#### SPECIALISATION

Islamica, India and the Near East, rare books and manuscripts

#### EXHIBITION HOURS

##### Launch Evening

Thurs 20th	10.00-20.00
Mon - Sat	10.00-18.00
Sunday	12.00-18.00

Catalogue available



Jacqueline Simcox Ltd

27 | SEE MAP PAGE 93

Shapero Rare Books Ltd  
105 New Bond Street, Mayfair  
London W1S 1DN  
Jacqueline Simcox  
+44 (0)7775 566 388  
js@jacquelinesimcox.com  
www.jacquelinesimcox.com



EXHIBITION HOURS

Launch Evenings

Thurs 20th	10.00-20.00
Thurs 27th	10.00-20.00
Mon - Sat	10.00-18.00
Sundays	11.00-17.00
Sat 5th	10.00-13.00

TALKS

An introduction to the Exhibition  
of Chinese Textiles

Mon 24th Oct  
11.00 am

A discussion of the variety of  
motifs employed in the Exhibition  
of Chinese Textiles

Mon 31st Oct  
11.00 am

EXHIBITION  
Chinese Textiles

DESCRIPTION

An exhibition of predominantly  
Ming dynasty Chinese silk textiles  
of the 15th – early 17th centuries,  
together with a small group of  
Chinese court costumes from the  
19th century

ON VIEW

20th October – 5th November

SPECIALISATION  
Chinese silk textiles

BUSINESS ADDRESS

By appointment only  
54 Linton Street, Islington  
London N1 7AS

Runjeet Singh

28 | SEE MAP PAGE 93

Shapero Rare Books Ltd  
105 New Bond Street, Mayfair  
London W1S 1DN  
Runjeet Singh  
+44 (0)7866 424 803  
info@runjeetsingh.com  
www.runjeetsingh.com



EXHIBITION  
Discoveries

DESCRIPTION

A striking collection of objects  
from all over Asia, including  
some important discoveries that  
exemplify the best of their type,  
or are unique

ON VIEW

20th October – 4th November

SPECIALISATION

Asian arms, armour and works  
of art

BUSINESS ADDRESS

PO Box 6778  
Royal Leamington Spa  
Warwickshire  
CV31 9PZ



EXHIBITION HOURS

Launch Evenings

Thurs 20th	10.00-20.00
Thurs 27th	10.00-20.00
Mon - Sat	10.00-18.00
Sun	11.00-17.00

TALKS

Introduction to Asian Arms and  
Armour

Mon 24th & Mon 31st Oct  
12.30 pm

Catalogue available

Catalogue available





## David Thatcher Samurai Art

29 | SEE MAP PAGE 93

Shapero Gallery  
105 New Bond Street  
London W1S 1ED

David Thatcher  
+44 (0)7971 955 214  
davidt@davidthatcher.co.uk  
www.davidthatcher.co.uk

### EXHIBITION HOURS

#### Launch Evenings

Thurs 20th	10.00-20.00
Thurs 27th	10.00-20.00
Mon - Sat	10.00-18.00
Sun	Closed

### RELATED EVENT

At Japan House (see page 6)

### EXHIBITION Takeda Legacy

#### DESCRIPTION

An exhibition of rare red lacquered armours associated with the Takeda Warlords during the Momoyama period 16th century feudal Japan

#### ON VIEW

20th October – 5th November

#### SPECIALISATION

Antique Japanese Armour

## Tsukimi Gallery

30 | SEE MAP PAGE 92

Japan House  
101-111 Kensington High Street  
London W8 5SA

Mr Maxime Mauchamp

+33 (0)781 046 980

+44 (0)7376 547 188

info@tsukimigallery.com  
www.tsukimigallery.com



### EXHIBITION

#### The Art of Collecting: Japan

#### DESCRIPTION

A selection of netsuke, kiseruzutsu and works of art will be available for sale at Japan House (see page 6)

#### ON VIEW

24th October – 20th November

#### SPECIALISATION

Japanese decorative art from Showa era to contemporary

### BUSINESS ADDRESS

PO Box  
14 rue Charles V - 75003  
Paris  
France

### EXHIBITION HOURS

Mon - Sat	10.00-20.00
Sundays	12.00-18.00

Catalogue available

Catalogue available online

Emerging Dealer



W. SHANSHAN 珊珊軒

31 | SEE MAP PAGE 94

3 Duke of York Street  
St James's  
London SW1Y 6JP

Dr. Shanshan Wang

+44 (0)20 7126 8216

gallery@artwshanshan.com

www.artwshanshan.com



Jorge Welsh  
Works of Art

32 | SEE MAP PAGE 92

116 Kensington Church Street  
London W8 4BH

Jorge Welsh

+44 (0)20 7229 2140

+44 (0)7831 186 224

uk@jorgewelsh.com

www.jorgewelsh.com



TALK

Lecture at the Library of University  
Women's Club, (2 Audley Square,  
London W1K 1DB), free to attend,  
please contact the gallery to reserve  
your place

Neolithic Asian art and life

Thurs 3rd Nov 18.30

GUIDED TOUR

Please contact the gallery to reserve  
your place

Fri 21st Oct 18.00

Fri 28th Oct 18.00

Fri 4th Nov 18.00

FURTHER EVENTS

Please see events page of the  
gallery website

EXHIBITION

Lives at Dawn: Neolithic  
Painted Pottery

DESCRIPTION

A selection of rare and finely  
painted pottery from Neolithic  
period (5000 - 1500 BCE) that  
depicts early forms of god and  
man through abstract patterns and  
geometric figures

ON VIEW

11th October – 8th December

SPECIALISATION

Early Asian art, ceramics, sculpture

EXHIBITION HOURS

Launch Evenings

Thurs 20th 14.00-21.00

Thurs 27th 14.00-21.00

Mon - Thurs 14.00-18.00

Mon 24th Oct, Wed 26th Oct &

Tues 1st Nov Closed

Fri 14.00-20.00

Other hours including weekends  
by appointment only

EXHIBITION

Okimono: Japanese Porcelain  
Figures from the Edo period

DESCRIPTION

This year's catalogue and exhibition  
explore the talent and creativity  
of the Japanese potter in creating  
a range of sophisticated human  
and animal figures in porcelain  
for the export market, during the  
second half of the 17th and the 18th  
century

ON VIEW

27th October – 5th November

SPECIALISATION

Cross-cultural works of art from  
China, India, Japan and Africa  
with emphasis on Chinese Export  
Porcelain

EXHIBITION HOURS

Launch Evening

Thurs 27th 09.00-20.00

Mon - Sat 09.00-17.30

Sun Closed

Catalogue available



### EXHIBITION HOURS

#### Launch Evening

Thurs 27th	17.00-20.00
Mon - Sat	11.00-17.00 by appointment
Sundays	Closed

### Zhi Zhi Arts Club

33 | SEE MAP PAGE 94

2nd Floor

39-40 St. James's Place  
London SW1A 1NY

Claire Ji

+44 (0)7340 049 059

claire@crowntcorp.com



### EXHIBITION

#### Modern Chinese Paintings and Chinese Porcelains

### DESCRIPTION

This exhibition includes the paintings by modern Chinese artists including Xu Beihong, Pu Ru, Chen Shaomei from the early 20th century; pottery and porcelains from the Neolithic Period to the Republic Period

### ON VIEW

27th October – 5th November

### SPECIALISATION

Chinese art

## Overseas Participants

### Anrad Gallery Ltd

Tribal & Folk Art from India  
London, By appointment only  
anu@anradgallery.com  
www.anradgallery.com  
+447778 483 498

### Chatterjee & Lal

Contemporary Art and Design;  
Histories of Art and Design from South Asia  
Floor 1, Kamal Mansion, 01/18, Arthur Bunder Rd,  
Colaba, Mumbai, Maharashtra 400005, India  
mort@chatterjeeandlal.com  
www.chatterjeeandlal.com  
+91 98202 98246

### Teresa Coleman Fine Arts Ltd

Antique Chinese Textiles, Fans, Rugs and Paintings  
Room 405, You Yuet Lai Building  
55 Wyndham Street, Central, Hong Kong  
tc@teresacoleman.com  
www.teresacoleman.com  
+852 25262450

### Dhoomimal Gallery

Modern and Contemporary Indian Art  
G 42, Connaught Cir, Block G, Connaught Place,  
New Delhi, Delhi 110001, India  
uday@dhoomimalgallery.com  
www.dhoomimalgallery.com  
+91 7042810256

### Lam & Co Antiquities

Early Ceramic, Ancient Bronze,  
Early Buddhist Sculpture  
2/F 151 Hollywood Road, Central, Hong Kong  
chrisantiquities@gmail.com  
www.lamcoantiquities.com  
+852 25438877

**Lam's Gallery**

Chinese Art & Antiques  
3C Yally Industrial Building, 6 Yip Fat Street  
Wong Chuk Hang, Hong Kong  
[info@lams-gallery.com](mailto:info@lams-gallery.com)  
[www.lams-gallery.com](http://www.lams-gallery.com)  
+852 94740066

**Mandarin Mansion**

Arms & Armour  
Haarlem, The Netherlands, By appointment only  
[peter@mandarinmansion.com](mailto:peter@mandarinmansion.com)  
[www.mandarinmansion.com](http://www.mandarinmansion.com)  
+31 623373442

Participants

**AUCTION HOUSES**

	Auction Houses	Speciality									
34	Bonhams	M	I	S	H	C	J	K	E		
35	Bonhams Knightsbridge			S	H	C	J	K	E		
36	Chiswick Auctions	M	I			C	J			Co	
37	Christie's	M	I	S	H	C	J	K	E		
38	Dore & Rees			S		C	J				
39	Lyon & Turnbull			S		C	J	K	E	Co	
40	Roseberys	M		S	H	C	J			Co	
41	Sotheby's	M	I	S	H	C	J	K	E	Co	
42	Sworders		I	S	H	C	J	K	E	Co	

- M

Islamic & Middle Eastern Art
- I

Indian Art
- S

Southeast Asian Art
- H

Himalayan & Central Asian Art
- C

Chinese Art
- J

Japanese Art
- K

Korean Art
- E

Export Art
- Co

Contemporary Art
- V

Vietnamese Art





Chinese Art, Japanese Art, Asian Art, Islamic Art

Chinese Art Department  
Asaph Hyman  
+44 (0)20 7468 5888  
asaph.hyman@bonhams.com

Japanese Art Department  
Suzannah Yip  
+44 (0)20 7468 8368  
suzannah.yip@bonhams.com

Bonhams

34 | SEE MAP PAGE 93

101 New Bond Street  
London W1S 1SR  
+44 (0)20 7447 7447  
www.bonhams.com



**AUCTION**  
**Islamic and Indian Art**  
**Online Sale**  
20th Oct (12.00) – 28th Oct (12.00)  
online sale only

**AUCTION**  
**Islamic and Indian Art**  
Tues 25th Oct 11.00

**VIEWING FOR BOTH AUCTIONS**  
Thurs 20th Oct 09.00–16.30  
Fri 21st Oct 09.00–16.30  
Sun 23rd Oct 11.00–15.00  
Mon 24th Oct 09.00–16.30

**AUCTION**  
**The Marsh Collection: Art for the Literati**  
Thurs 3rd Nov 10.00

**AUCTION**  
**The Marsh Collection: Art for the Literati**  
**Online sale**  
Fri 28th Oct - Mon 7th Nov

**AUCTION**  
**Fine Chinese Art**  
Thurs 3rd Nov 12.30

**AUCTION**  
**Imperial Painted Lacquer Furniture and Scholar's Objects from China's Ming and Early Qing Dynasties**  
Thurs 3rd Nov 16.30

**VIEWING FOR ALL CHINESE AUCTIONS**  
Sat 29th Oct 11.00–17.00  
Sun 30th Oct 11.00–17.00  
Mon 31st Oct 09.00–19.30  
(partial viewing from 16.00)  
Tues 1st Nov 09.00–17.00  
Wed 2nd Nov 09.00–16.30

**AUCTION**  
**Fine Japanese Art**  
Thurs 3rd Nov 11.00

**VIEWING**  
Sun 30th Oct 11.00–17.00  
Mon 31st Oct 09.00–19.30  
(partial viewing from 16.00)  
Tues 1st Nov 09.00–17.00  
Wed 2nd Nov 09.00–16.30

**TALK**  
**OCS Lecture**  
Mon 31st October  
**18.00**  
Lecture by Sam Marsh on The Marsh Collection: Art for the Literati  
Drinks: 17.00-18.00

Catalogues available

Please note: all sale times and viewing times should be confirmed

Catalogues available

Please note: all sale times and viewing times should be confirmed





## Bonhams Knightsbridge

35 | SEE MAP PAGE 95

Montpelier Street  
Knightsbridge  
London SW7 1HH  
+44 (0)20 7393 3900  
www.bonhams.com



The Department holds two specialised Asian Art auctions each year, comprising Chinese ceramics, works of art, textiles and paintings; also including pieces from Japan, Korea, the Himalayas and South East Asia.

Rachel Hyman  
+44 (0)20 7393 3854  
rachel.hyman@bonhams.com

Bianca Dolfin  
+44 (0)20 7393 3886  
bianca.dolfin@bonhams.com

Catalogue available

Please note: all sale times and viewing times should be confirmed

## Chiswick Auctions

36

The Barley Mow Centre  
10 Barley Mow Passage  
Chiswick W4 4PH  
+44 (0)20 8992 4442  
www.chiswickauctions.co.uk



**AUCTION**  
**Islamic Art – Property of a European Collector Part IV**  
Fri 28th Oct 11.00

**AUCTION**  
**Islamic & Indian Art**  
Fri 28th Oct 14.00

**VIEWING FOR BOTH AUCTIONS**  
Sat 22nd Oct 11.00–17.00  
Mon 24th Oct 10.00–17.00  
Tues 25th Oct 10.00–17.00  
Wed 26th Oct 10.00–20.00  
Thurs 27th Oct 10.00–17.00

**AUCTION**  
**Asian Art**  
Wed 16th Nov 10.00  
Thurs 17th Nov 10.00

**VIEWING**  
Fri 11th Nov 11.00–16.00  
Sat 12th Nov 11.00–16.00  
Sun 13th Nov 11.00–16.00  
Mon 14th Nov 11.00–16.00  
Tues 15th Nov 11.00–16.00

**EVENING VIEWING**  
For information about viewing dates, evening views and events please refer to the Auction Calendar on our website

Chinese Art, Japanese Art  
Islamic Art, Indian Art

Asian Art  
Marta Somauroo  
+44 (0)20 3089 6865  
marta@chiswickauctions.co.uk

Islamic & Indian Art  
Beatrice Campi  
+44 (0)20 3089 6855  
beatrice.campi@chiswickauctions.co.uk

Catalogues available

Please note: all sale times and viewing times should be confirmed



Indian & Islamic Department  
Oriental Rugs & Carpets  
Chinese Ceramics and Works of Art

Indian & Islamic Department  
Behnaz Atighi Moghaddam  
+44 (0)20 7389 2509  
batighi@christies.com

Oriental Rugs & Carpets  
Louise Broadhurst  
+44 (0)20 7389 2603  
lbroadhurst@christies.com

Chinese Ceramics and Works of Art  
Kate Hunt  
+44 (0)20 7752 3389  
khunt@christies.com

### Christie's

37 | SEE MAP PAGE 94

8 King Street  
St. James's  
London SW1Y 6QT  
+44 (0)20 7839 9060  
www.christies.com



### AUCTION Art of the Islamic and Indian Worlds including Oriental Rugs and Carpets

Thurs 27th Oct  
morning session 10.00  
afternoon session 14.00

### VIEWING

Sat 22nd Oct 12.00–17.00  
Sun 23rd Oct 12.00–17.00  
Mon 24th Oct 09.00–17.00  
Tues 25th Oct 09.00–20.00  
Wed 26th Oct 09.00–17.00

### EVENING VIEWING

Tues 25th Oct 09.00–20.00

### TALK

Collecting Chinese Jades:  
the Qianlong Emperor and  
Republican Connoisseurs -  
a lecture to coincide with the sale  
of the V. W. S. Collection  
Tues 1st Nov  
18.00

### AUCTION

Exhibition of auction  
highlights, From Beijing  
to Versailles, The V.W.S.  
Collection, Paris

Tues - Wed 13th-14th Dec

### AUCTION

Exhibition of auction  
highlights, Art d'Asie, Paris  
Fri 16th Dec

### LONDON VIEWING

Thurs 27th Oct 17.00–20.00  
Fri 28th Oct 09.00–17.00  
Sat 29th - 12.00–17.00  
Sun 30th Oct  
Mon 31st Oct - 09.00–17.00  
Fri 4th Nov

### EVENING VIEWING

Thurs 27th Oct 17.00–20.00

Catalogue available

Please note: all sale times and  
viewing times should be confirmed

Catalogues available

Please note: all sale times and  
viewing times should be confirmed



### Dore & Rees

38 | SEE MAP PAGE 96

Asia House  
63 New Cavendish St  
London W1G 7LP  
+44 (0)1373 462 257  
www.doreandrees.com



### Lyon & Turnbull

39 | SEE MAP PAGE 95

22 Connaught Street  
London W2 2AF  
+44 (0)20 7930 9115  
www.lyonandturnbull.com



Led by Lee Young, Dore & Rees holds two Asian auctions a year, focusing on fine examples of Chinese, Japanese and South Asian Art.

Asian Art  
Lee Young  
+44 (0)1373 462 257  
+44 (0)7825 426 555  
lee.young@doreandrees.com

#### AUCTION Fine Asian Art

Mon 7th Nov 10.30

#### LONDON VIEWING

Sun 30th Oct 12.00–18.00  
Mon 31st Oct 10.00–18.00  
Tues 1st Nov 10.00–14.00

#### BUSINESS ADDRESS

Auction Salerooms  
Vicarage Street, Frome  
Somerset BA11 1PU

#### SOMERSET VIEWING

Fri 4th Nov 10.00–16.00  
Sat 5th Nov 10.00–16.00  
Sun 6th Nov 10.00–16.00

#### AUCTION Fine Asian & Islamic Works of Art Online sale

Fri 4th Nov 10.00

#### VIEWING

Sun 30th Oct 10.00–17.00  
Mon 31st Oct 10.00–17.00  
Tues 1st Nov 10.00–17.00  
Wed 2nd Nov 10.00–17.00  
Thurs 3rd Nov 10.00–17.00

Established in Edinburgh in 1826, Lyon & Turnbull is Scotland’s oldest firm of auctioneers holding regular sales of Asian art, notably Chinese.

Asian  
Grace Tu  
+44 (0)20 7930 9115  
+44 (0)7467 953 462  
grace.tu@lyonandturnbull.com

Catalogue available

Please note: all sale times and viewing times should be confirmed

Catalogue available

Please note: all sale times and viewing times should be confirmed



Roseberys

40 | SEE MAP PAGE 93

70-76 Knight's Hill  
West Norwood  
London SE27 0JD  
+44 (0)20 8761 2522  
www.roseberys.co.uk



Antiquities, Chinese Art, Japanese Art, Himalayan Art, Vietnamese Art, Korean Art, Export Art, Islamic & Middle Eastern Art, Islamic & Indian Arts.

Islamic and Indian Arts  
Alice Bailey  
+44 (0)7855 250 170  
alicebailey@roseberys.co.uk

Chinese, Japanese and South East Asian Art  
Bill Forrest  
+44 (0)7912 719 214  
billforrest@roseberys.co.uk

**AUCTION**  
**Antiquities, Islamic & Indian Arts**

Fri 28th Oct 10.00

**VIEWING AT 12 HAY HILL, MAYFAIR, LONDON W1J 8NR**

Thurs 20th Oct 12.00–18.30  
Fri 21st Oct 10.00–16.00

**EVENING VIEWING**  
Islamic and Indian Arts

Drinks Reception  
Thurs 20th Oct 18.30–20.00  
at 12 Hay Hill, Mayfair  
London W1J 8NR

**VIEWING AT KNIGHT'S HILL SALESROOM**

Sun 23rd Oct 10.00–14.00  
Mon 24th Oct 09.30–17.00  
Tues 25th Oct 09.30–17.00  
Wed 26th Oct 09.30–17.00  
Thurs 27th Oct 09.30–17.00

**AUCTION**  
**Chinese, Japanese & South East Asian Works of Art**

Tues 8th Nov 10.00  
Wed 9th Nov 10.00

**VIEWING AT THE NINE BRITISH ART 9 BURY STREET, ST JAMES'S LONDON SW1Y 6AB**

Sat 29th Oct 12.00–20.00  
Sun 30th Oct 10.00–17.00

**EVENING VIEWING**

East Asian Arts  
Drinks Evening  
Sat 29th Oct 17.00–20.00  
at The Nine British Art  
9 Bury Street, St. James's  
London SW1Y 6AB

**VIEWING AT KNIGHT'S HILL SALESROOM**

Thurs 3rd Nov 10.00–17.00  
Fri 4th Nov 10.00–17.00  
Sun 6th Nov 10.00–14.00  
Mon 7th Nov 10.00–17.00

**PREVIEW ADDRESSES**

Islamic and Indian Arts  
12 Hay Hill, Mayfair  
London W1J 8NR

Chinese, Japanese and South East Asian Art  
The Nine British Art  
9 Bury Street, St. James's  
London SW1Y 6AB

Catalogue available

Please note: all sale times and viewing times should be confirmed

Catalogue available

Please note: all sale times and viewing times should be confirmed



Founded in 1744, Sotheby's holds auctions of important collections and examples of Chinese, Japanese, Islamic and Indian & South Asian art in London.

Islamic and Indian Art  
Benedict Carter  
+44 (0)20 7293 5113  
benedict.carter@sothebys.com

Japanese Art  
Mark Hinton  
+44 (0)20 7293 6537  
mark.hinton@sothebys.com

Modern & Contemporary  
South Asian Art  
Ishrat Kanga  
+44 (0)20 7293 6603  
+44 (0)7971 824 842  
Ishrat.Kanga@sothebys.com

Chinese Works of Art  
Cherrei Tian  
+44 (0)20 7293 6170  
Cherrei.Tian@sothebys.com

Sotheby's

41 | SEE MAP PAGE 93

34-35 New Bond Street  
London W1A 2AA  
+44 (0)20 7293 5000  
www.sothebys.com



**AUCTION**  
**The Charlier and Cortina**  
**Collection of Exotic Samurai**  
**Helmets and Armour**  
**Online sale**  
Wed 21st - Wed 28th Sept

**VIEWING**  
Sat 24th Sept 12.00-17.00  
Sun 25th Sept 12.00-17.00  
Mon 26th Sept 09.00-16.30  
Tues 27th Sept 09.00-12.00

**AUCTION**  
**A Collection of Twentieth**  
**Century Japanese Prints**  
**Online sale**  
Tues 25th Oct - Tues 1st Nov

**VIEWING**  
Sat 29th Oct 12.00-17.00  
Sun 30th Oct 12.00-17.00  
Mon 31st Oct 09.00-16.30  
Tues 1st Nov 09.00-12.00

**AUCTION**  
**20th Century Art / Middle East**  
**Online sale**  
Tues 25th Oct

**VIEWING**  
Sat 22nd Oct 12.00-17.00  
Sun 23rd Oct 12.00-17.00  
Mon 24th Oct 09.00-16.30  
Tues 25th Oct 09.00-12.00

**AUCTION**  
**Modern & Contemporary**  
**South Asian Art**  
Tues 25th Oct 14.00

**VIEWING**  
Fri 21st Oct 09.00-16.30  
Sat 22nd Oct 12.00-17.00  
Sun 23rd Oct 12.00-17.00  
Mon 24th Oct 09.00-16.30  
Tues 25th Oct 09.00-13.00

**AUCTION**  
**Arts of the Islamic World &**  
**India including Fine Rugs and**  
**Carpets**  
Wed 26th Oct 10.30

**VIEWING**  
Sat 22nd Oct 12.00-17.00  
Sun 23rd Oct 12.00-17.00  
Mon 24th Oct 09.00-16.30  
Tues 25th Oct 09.00-16.30

**AUCTION**  
**Books and Manuscripts from**  
**the Japan Society Library**  
**Online sale**  
Fri 28th Oct - Fri 4th Nov

**VIEWING**  
Sat 29th Oct 12.00-17.00  
Sun 30th Oct 12.00-17.00  
Mon 31st Oct 09.00-16.30  
Tues 1st Nov 09.00-12.00

**AUCTION**  
**A Journey through China's**  
**History: The Dr Wou Kiuan**  
**Collection**  
Tues 1st Nov 10.30

**VIEWING**  
Sat 29th Oct 12.00-17.00  
Sun 30th Oct 12.00-17.00  
Mon 31st Oct 09.00-16.30

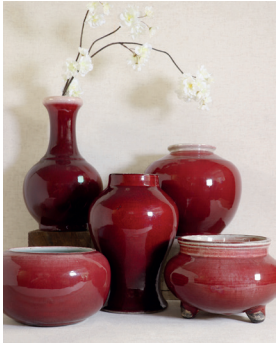
**AUCTION**  
**Important Chinese Art**  
Wed 2nd Nov 10.30

**VIEWING**  
Sat 29th Oct 12.00-17.00  
Sun 30th Oct 12.00-17.00  
Mon 31st Oct 09.00-16.30  
Tues 1st Nov 09.00-16.30

**AUCTION**  
**Fine Japanese Prints**  
**Online sale**  
Fri 9th - Fri 16th Dec

Catalogues available

Please note: all sale times and viewing times should be confirmed



Sworders was established in a coffee shop in 1782 and is one of the UK’s leading Fine Art Auctioneers. We conduct two auctions of Chinese and Japanese ceramics, works of art and paintings a year, with our autumn sale coinciding with Asian Art in London.

All lots will be on extended view at our London Office in Cecil Court adjacent to Leicester Square, while the sale itself will take place at our Stanstead Mountfitchet auction room.

Yexue Li  
+44 (0)1279 817 778  
yexueli@sworder.co.uk

Digital catalogue available  
Please note: all sale times and viewing times should be confirmed

Sworders

42 | SEE MAP PAGE 96

15 Cecil Court  
London WC2N 4EZ  
+44 (0)1279 817 778  
www.sworder.co.uk

AUCTION  
Asian Art  
Fri 4th Nov 10.00

AT  
The Stansted Auction Rooms  
Cambridge Road  
Stansted Mountfitchet  
Essex CM24 8GE

VIEWING IN LONDON  
15 Cecil Court  
London WC2N 4EZ  
  
Sat 29th Oct 10.00-13.00  
Sun 30th Oct 10.00-13.00  
Mon 31st Oct 10.00-16.00  
Tues 1st Nov 10.00-16.00  
Weds 2nd Nov 10.00-16.00  
Thurs 3rd Nov 10.00-16.00

20th to 27th September

SOTHEBY’S  
Online Only Fine Japanese Works of Art

21st to 28th September

SOTHEBY’S  
Online Only The Charlier and Cortina Collection of  
Exotic Samurai Helmets and Armour

20th to 28th October

BONHAMS  
Online Only Islamic and Indian Art Online Sale

25th October to 1st November

SOTHEBY’S  
Online Only A Collection of Twentieth Century  
Japanese Prints

28th October to 4th November

SOTHEBY’S  
Online Only Books and Manuscripts from the  
Japan Society Library

28th October to 7th November

BONHAMS  
Online Only The Marsh Collection:  
Art for the Literati Online sale

Tuesday 25th October

SOTHEBY’S  
Online 20th Century Art / Middle East

BONHAMS  
11.00 Islamic & Indian Art

SOTHEBY’S  
14.00 Modern & Contemporary South Asian Art

Wednesday 26th October

SOTHEBY’S  
10.30 Arts of the Islamic World & India including  
Fine Rugs and Carpets

Thursday 27th October

CHRISTIE’S  
10.00 & 14.00 Art of the Islamic and Indian Worlds  
including Oriental Rugs and Carpets

Please note: all sale times should be confirmed



Friday 28th October

ROSEBERYS

10.00 Antiquities, Islamic & Indian Arts

CHISWICK AUCTIONS

11.00 Islamic Art – Property of a European Collector Part IV

CHISWICK AUCTIONS

14.00 Islamic & Indian Art

Monday 31st October

BONHAMS KNIGHTSBRIDGE

10.00 Asian Art

Tuesday 1st November

BONHAMS KNIGHTSBRIDGE

10.00 Asian Art

SOTHEBY'S

10.30 A Journey through China's History:  
The Dr Wou Kiuan Collection

Wednesday 2nd November

SOTHEBY'S

10.30 Important Chinese Art

Thursday 3rd November

BONHAMS

10.00 The Marsh Collection: Art for the Literati

BONHAMS

11.00 Fine Japanese Art

BONHAMS

12.30 Fine Chinese Art

BONHAMS

16.30 Imperial Painted Lacquer Furniture and  
Scholar's Objects from China's Ming and  
Early Qing Dynasties

Friday 4th November

LYON & TURNBULL

10.00 Fine Asian & Islamic Works of Art  
(Online only)

SWORDERS

10.00 Asian Art

Monday 7th November

DORE & REES

10.30 Fine Asian Art

Tuesday 8th November

ROSEBERYS

10.00 Chinese, Japanese & South East Asian  
Works of Art

Wednesday 9th November

ROSEBERYS

10.00 Chinese, Japanese & South East Asian  
Works of Art

Wednesday 16th November

CHISWICK AUCTIONS

10.00 Asian Art

Thursday 17th November

CHISWICK AUCTIONS

10.00 Asian Art

9th - 16th December

SOTHEBY'S

Online Only Fine Japanese Prints

Tuesday 13th December

CHRISTIE'S PARIS

From Beijing to Versailles,  
The V.W.S. Collection

Wednesday 14th December

CHRISTIE'S PARIS

From Beijing to Versailles,  
The V.W.S. Collection

Friday 16th December

CHRISTIE'S PARIS

Art d'Asie, Paris



Asian Collections,  
Societies, etc

## LONDON COLLECTIONS

**The British Library**

96 Euston Road  
London NW1 2DB  
+44 (0)843 2081144  
www.bl.uk

**The British Museum**

Great Russell Street  
London WC1B 3DG  
+44 (0)20 7323 8000  
www.britishmuseum.org

**The Fan Museum**

12 Crooms Hill  
London SE10 8ER  
+44 (0)20 8305 1441  
www.thefanmuseum.org.uk  
info@thefanmuseum.org.uk

**Horniman Museum**

100 London Road  
Forest Hill  
London SE23 3PQ  
+44 (0)20 8699 1872  
www.horniman.ac.uk  
enquiry@horniman.ac.uk

**Museum of Croydon Riesco  
Collection of Chinese Ceramics**

Croydon Clocktower  
Katharine Street  
Croydon CR9 1ET  
+44 (0)20 8253 1022  
www.museumofcroydon.com  
museum@croydon.gov.uk

**National Maritime Museum  
Greenwich**

London SE10 9NF  
+44 (0)20 8858 4422  
www.rmg.co.uk  
bookings@rmg.co.uk

**Royal Collection Trust**

St James's Palace  
St. James's  
London SW1A 1BQ  
+44 (0)30 3123 7300  
www.rct.uk

**Sir John Soane's Museum**

13 Lincoln's Inn Fields  
London WC2A 3BP  
+44 (0)20 7405 2107  
www.soane.org  
admin@soane.org.uk

**Victoria and Albert Museum**

Cromwell Road  
London SW7 2RL  
+44 (0)20 7942 2000  
www.vam.ac.uk

**The Wallace Collection**

Hertford House  
Manchester Square  
London W1U 3BN  
+44 (0)20 7563 9500  
www.wallacecollection.org  
enquiries@wallacecollection.org

## COLLECTIONS OUTSIDE LONDON

**The Ashmolean Museum**

Beaumont Street  
Oxford OX1 2PH  
+44 (0)1865 278 000  
www.ashmolean.org  
eastern-art@ashmus.ox.ac.uk

**The Barlow Collection of  
Chinese Ceramics, Bronzes and  
Jades**

The Ashmolean Museum  
Beaumont Street  
Oxford OX1 2PH  
+44 (0)1865 278 000  
www.ashmolean.org

**Birmingham Museum & Art  
Gallery**

Chamberlain Square  
Birmingham B3 3DH  
+44 (0)121 348 8000  
www.bmag.org.uk  
hello@  
birminghammuseums.org.uk

**Bristol Museum and Art Gallery**

Queen's Road  
Bristol BS8 1RL  
+44 (0)117 922 3571  
www.bristolmuseums.org.uk/  
bristol-museum-and-art-gallery/  
general.museum@bristol.gov.uk

**The Burrell Collection**

Pollok Country Park 2060  
Pollokshaws Road  
Glasgow G43 1AT  
+44 (0)141 287 2550  
burrellcollection.com/  
museums@glasgowlife.org.uk

**Compton Verney House Trust**

Compton Verney  
Warwickshire CV35 9HZ  
+44 (0)1926 645 500  
www.comptonverney.org.uk  
info@comptonverney.org.uk

**The Fitzwilliam Museum**

Trumpington Street  
Cambridge CB2 1RB  
+44 (0)1223 332 900  
www.fitzmuseum.cam.ac.uk  
reception@  
fitzmuseum.cam.ac.uk

**Maidstone Museum & Bently  
Art Gallery**

St Faith's Street  
Maidstone  
Kent ME14 1LH  
+44 (0)1622 602 838  
www.museum.maidstone.gov.uk  
museuminfo@maidstone.gov.uk

**The Museum of East Asian Art**

12 Bennett Street  
Bath BA1 2QJ  
+44 (0)1225 464 640  
www.meaa.org.uk  
info@meaa.org.uk

**National Museum of Scotland**

Chambers Street  
Edinburgh EH1 1JF  
+44 (0)300 123 6789  
www.nms.ac.uk  
info@nms.ac.uk

**Oriental Museum**

University of Durham  
Elvet Hill, Off South Road  
Durham DH1 3TH  
+44 (0)191 334 5694  
www.dur.ac.uk/oriental.museum  
oriental.museum@durham.ac.uk

**Pitt Rivers Museum**

South Parks Road  
Oxford OX1 3PP  
+44 (0)1865 270 927  
www.prm.ox.ac.uk  
prm@prm.ox.ac.uk

**Russell-Cotes Art Gallery &  
Museum**

Russell Cotes Road  
Bournemouth BH1 3AA  
+44 (0)1202 128000  
russellcotes.com/  
russellcotes@bcpcouncil.gov.uk

**Sainsbury Centre for Visual Arts**

University of East Anglia  
Norwich NR4 7TJ  
+44 (0)1603 593 199  
www.sainsburycentre.ac.uk/

## ASIAN SOCIETIES AND CULTURAL CENTRES

**Society of Antiquaries of London**

Burlington House  
Piccadilly London W1J 0BE  
+44 (0)20 7479 7080  
www.sal.org.uk  
admin@sal.org.uk

**Asia House**

63 New Cavendish Street  
London W1G 7LP  
+44 (0)20 7307 5454  
www.asiahouse.org  
enquiries@asiahouse.co.uk

**The Bhavan Centre UK  
(Institute of Indian Art and Culture)**

4a Castletown Road  
London W14 9HE  
+44 (0)20 7381 3086  
www.bhavan.net  
info@bhavan.net

**The British Library (Friends)**

96 Euston Road  
London NW1 2DB  
+44 (0)20 7412 7734  
www.support.bl.uk  
supporters@bl.uk

**British Museum (Friends)**

The British Museum  
Great Russell Street  
London WC1B 3DG  
+44 (0)20 7323 8299  
www.britishmuseum.org  
friends@britishmuseum.org

**China Exchange**

32a Gerrard Street  
London W1D 6JA  
+44 (0)20 7734 1931  
www.chinaexchange.uk  
info@chinaexchange.uk

**Centre for Chinese  
Contemporary Art (CFCCA)**

Market Buildings, 13  
Thomas Street  
Manchester M4 1EU  
+44 (0)161 832 7271  
www.cfcca.org.uk  
hello@cfcca.org.uk

**The Daiwa Anglo-Japanese  
Foundation**

Japan House  
13/14 Cornwall Terrace Mews  
London NW1 4QP  
+44 (0)20 7486 4348  
www.dajf.org.uk  
office@dajf.org.uk

**Museum of East Asian Art  
(Friends)**

12 Bennett Street  
Bath BA1 2QJ  
+44 (0)1225 464 640  
www.meaa.org.uk  
info@meaa.org.uk

**The Great Britain-China Centre**

15 Belgrave Square  
London SW1X 8PS  
+44 (0)20 7235 6696  
www.gbcc.org.uk  
contact@gbcc.org.uk

**Indian Art Circle**

SOAS, University of London  
Thornhaugh Street  
Russell Square  
London WC1H 0XG  
+44 (0)20 7637 2388  
www.soas.ac.uk  
indianartcircle.london@  
gmail.com

**International Netsuke Society**

European Chapter  
PO Box 2281  
Woodford Green  
London IG7 5YP  
www.netsuke.org/  
mvargashandle@outlook.com

**Iran Heritage Foundation**

SOAS University of London  
Thornhaugh Street  
London WC1H 0XG  
UK+44 (0)20 7493 4766  
www.iranheritage.org/  
info@iranheritage.org

**The Iran Society**

16 Old Queen Street  
London SW1H 9HP  
+44 (0)20 7235 5122  
www.iransociety.org  
info@iransociety.org

**Islamic Art Circle (SOAS)**

Brookfields Swerford  
Chipping Norton  
Oxfordshire OX7 4BG  
+44 (0)7714087480  
rosalindhaddon@gmail.com

**The Japan Society**

13/14 Cornwall Terrace  
London NW1 4QP  
+44 (0)20 7935 0475  
www.japansociety.org.uk  
info@japansociety.org.uk

**Korean Cultural Centre UK**

Ground Floor, Grand Buildings  
1-3 Strand  
London WC2N 5BW  
+44 (0)20 7004 2600  
kccuk.org.uk/en/  
info@kccuk.org.uk

**The Nehru Centre**

8 South Audley Street  
London W1K 1HF  
+44 (0) 2074 932 019  
www.nehrucentre.org.uk

**Oriental Ceramic Society**

PO Box 77859  
London SW20 2GB  
+44 (0)7546 026 338  
www.orientalceramicsociety.  
org.uk/  
info@orientalceramicsociety.  
org.uk

**Oriental Museum (Friends)**

University of Durham  
Elvet Hill, Durham DH1 3TH  
+44 (0)191 334 5694  
www.dur.ac.uk/oriental.museum/  
whatson/events/friends/  
fomdurham@fastmail.co.uk

**Oriental Rug and Textile  
Society**

Moon's End  
Hook Norton  
Oxfordshire OX15 5NQ  
orientalrugandtextilesociety.  
org.uk  
membership.orts@gmail.com

**Royal Asiatic Society**

14 Stephenson Way  
London NW1 2HD  
+44 (0)20 7388 4539  
www.royalasiaticsociety.org  
info@royalasiaticsociety.org

**Royal Society for Asian Affairs**

16 Old Queen Street  
London SW1H 9HP  
+44 (0)20 7235 5122  
info@rsaa.org.uk  
www.rsaa.org.uk  
Library and archive accessible  
by prior appointment.

**Sainsbury Institute for the  
Study of Japanese Arts and  
Cultures**

64 The Close  
Norwich NR1 4DH  
+44 (0)1603 597507  
www.sainsbury-institute.org  
sisjac@sainsbury-institute.org

**School of Oriental & African  
Studies (SOAS)**

University of London  
Thornhaugh Street  
Russell Square  
London WC1H 0XG  
+44 (0)20 7637 2388  
www.soas.ac.uk

**SOAS Postgraduate Diploma in  
Asian Art**

+44 (0)20 77898 4445  
www.soas.ac.uk/art/  
programmes/dipasart/  
asianart@soas.ac.uk

**Victoria and Albert Museum  
(Friends)**

Cromwell Road  
London SW7 2RL  
+44 (0)20 7942 2271  
www.vam.ac.uk/membership  
membership@vam.ac.uk



## OTHER COLLECTIONS WHICH INCLUDE ASIAN ART

### Ascott House

Estate Office, Wing  
Near Leighton Buzzard  
Bedfordshire LU7 0PR  
+44 (0)1296 688 242  
[www.ascottestate.co.uk](http://www.ascottestate.co.uk)  
[info@ascottestate.co.uk](mailto:info@ascottestate.co.uk)

### Chiddingstone Castle

Hill Hoath Road  
Chiddingstone  
Near Edenbridge  
Kent TN8 7AD  
+44 (0)1892 870 347  
[www.chiddingstonecastle.org.uk](http://www.chiddingstonecastle.org.uk)  
[hello@chiddingstonecastle.org.uk](mailto:hello@chiddingstonecastle.org.uk)

### Kedleston Hall

Quarndon  
Derby  
Derbyshire DE22 5JH  
+44 (0)1332 842 191  
[www.nationaltrust.org.uk/kedleston-hall](http://www.nationaltrust.org.uk/kedleston-hall)  
[kedlestonhall@nationaltrust.org.uk](mailto:kedlestonhall@nationaltrust.org.uk)

### Powis Castle

Welshpool  
Powys  
Wales SY21 8RF  
+44 (0)1938 551 944  
[www.nationaltrust.org.uk/powis-castle](http://www.nationaltrust.org.uk/powis-castle)  
[powiscastle@nationaltrust.org.uk](mailto:powiscastle@nationaltrust.org.uk)

### Sherborne Castle

New Road Sherborne  
Dorset DT9 5NR  
+44 (0) 1935 813182  
[www.sherbornecastle.com](http://www.sherbornecastle.com)  
[castleoffice@sherbornecastle.com](mailto:castleoffice@sherbornecastle.com)

### Waddesdon Manor

Near Aylesbury  
Buckinghamshire HP18 0JH  
+44 (0)1296 820414  
[www.waddesdon.org.uk](http://www.waddesdon.org.uk)  
[enquiries@waddesdon.org.uk](mailto:enquiries@waddesdon.org.uk)

Sponsors and  
Partners



# Essential art & antiques coverage

ISSUE 2546 | antiquesradegazette.com | 11 June 2022 | UK £4.99 | USA \$7.95 | Europe €5.50

**ANTIQUESTRADegazette**  
THE ART MARKET WEEKLY

**William de Morgan record for Goodison's £45 vase**  
Christie's posted an auction record for William de Morgan when this Arts & Crafts faience vase sold at £50,000 (\$84,000 including 20% buyer's premium) as part of the collection of the banker and connoisseur collector Sir Nicholas Goodison (1924-2021).  
The estimate on May 25 was £15,000-20,000.  
Standing 35cm (13in) high this Sands End, Fulham period vase, c.1888-97, is painted by leading factory decorator Fred Passanger with three stylised peacocks and Persian-style manganese carnations against a dark blue ground.  
It was formerly owned by the Morgan family patron Louis Morgan, 2nd Baron Swaythling (1869-1927) and was with dealer Richard Dennis in 1962.  
According to a paper label  
Continued on page 4

**Battersea blow-out: Dealers report a string of**

**Colnaghi and Elliott team up**  
by Frances Allitt  
International gallery Colnaghi has formed a partnership with fledgling drawings dealer Will Elliott to launch Colnaghi Elliott Master Drawings.  
The new enterprise aims to mix Colnaghi's clout as a seasoned establishment with Elliott's eye for the art of lesser-known figures.  
Continued on page 4

**Nicholson goes to Green**  
London dealer Richard Green was the successful bidder on a Sir William Nicholson (1872-1949) still-life sold for £2,811,000 (plus 20% buyer's fee).

**Get 12 issues for £12**  
save 80% on the cover price

Antiques Trade Gazette  
The Art Market Weekly

Elephant in the room: an exceptional clock


Old Masters of shipping art and antiques

Antiques Trade Gazette  
The Art Market Weekly

# The art of seeing clearly

SEPTEMBER 2022 £7.95

**APOLLO**  
THE INTERNATIONAL ART MAGAZINE



The art you really should see in South Korea

Jil Sander refashions the English garden

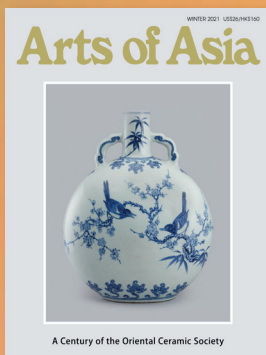
Umbria's Old Masters get the home they deserve

**Try your first three issues of Apollo for just £3**  
for the best writing about art, incisive commentary and exclusive reviews

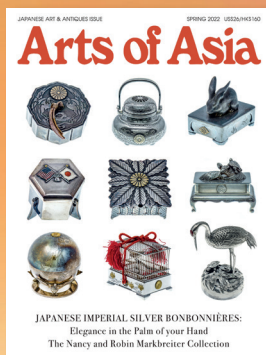
**antiquestradegazette.com/  
subscribe**

ANTIQUESTRADegazette  
THE ART MARKET WEEKLY

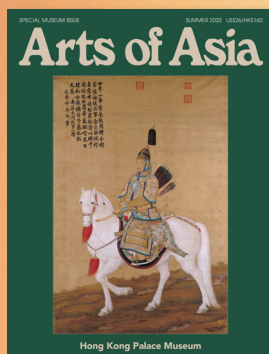
**Subscribe here:**  
**www.apollo-magazine.com/AAIL**



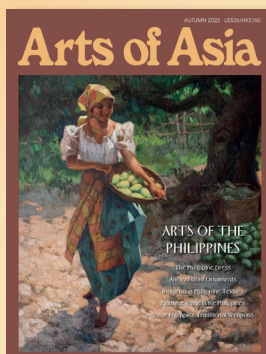
Winter 2021



Spring 2022



Summer 2022



Autumn 2022

*Arts of Asia*, founded in 1970, is the premier international Asian arts and antiques magazine. Every edition is treasured by collectors, dealers, museums and galleries and is essential reading for enhancing and enriching your knowledge of Asian art.

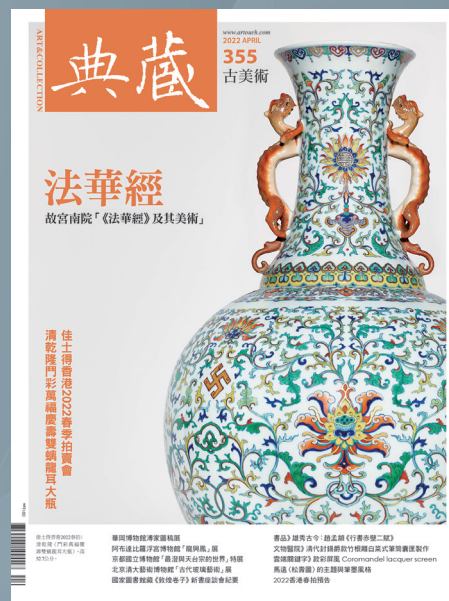
Lavishly illustrated articles by the world's leading experts and scholars are carefully prepared and printed on the finest quality Japanese paper. The publication also provides an invaluable source of information on Asian art news and trends, including current reports on gallery and museum exhibitions, auctions and fairs.

*Arts of Asia* is a wonderful resource for those interested in Asian art, antiques and culture. The annual subscription cost for four beautiful issues is US\$105 inclusive of surface mail delivery. For airmail delivery to America and Europe add US\$65. Please visit [www.artsofasia.com](http://www.artsofasia.com) for more information, editorial archives, back issues purchase, and links to the best Asian art websites.

[www.artsofasia.com](http://www.artsofasia.com)

801 Tesbury Centre, 28 Queen's Road East, Wanchai, Hong Kong  
T: 852-2376-2228 F: 852-2376-3713 E: [info@artsofasia.com](mailto:info@artsofasia.com)

典藏 古美術  
ART & COLLECTION



Art & Collection

Monthly magazine since 1992

An authoritative source of information  
on varied aspects of the arts of Asia



Facebook



[artouch.com](http://artouch.com)

6F, No. 85, Sec. 1, Zhongshan N. Rd., Zhongshan Dist.,  
Taipei City 104, Taiwan (R.O.C.)  
+886-2-25602220#300





# ASIAN ART

THE NEWSPAPER FOR COLLECTORS, DEALERS, MUSEUMS AND GALLERIES



Throughout the year  
in print, online, and  
digital-interactive issues

*Celebrating 25 Years*

[asianartnewspaper.com](http://asianartnewspaper.com)

[info@asianartnewspaper.com](mailto:info@asianartnewspaper.com) / [advertising@asianartnewspaper.com](mailto:advertising@asianartnewspaper.com)



**ASIAN AND ISLAMIC ART  
SPECIAL ISSUE EVERY OCTOBER**

**30% off for new subscribers**

Visit our website for more information

[shop.burlington.org.uk](http://shop.burlington.org.uk)

Terms and Conditions apply. This offer is applicable for new subscribers and for the first year only.  
For more information on our full pricing list and range of subscription packages available,  
please visit: [shop.burlington.org.uk/subscriptions](http://shop.burlington.org.uk/subscriptions)

# CAnS

WHERE CLASSIC AND  
CONTEMPORARY CONVERGE

05.10 — 08.10.2022

CAnS 藝術新聞

2022/04 No.291 www.cansart.com.tw

古琴  
Ancient  
CAnS

Sotheby's | 蘇富比 EST. 1744

香港春季  
中國藝術  
2022年

拍賣焦點 • 2022.04.11  
蘇富比2022春季拍賣會  
— 中國藝術珍品

清康熙至雍正初年 / 乾隆  
乾隆帝御寶大卿少卿紐壽山石璽  
印文：乾隆御覽之寶  
7.8 x 7.8 x 10.7公分  
估價特例

04  
9 771028 166009  
9 771028 166009



# FINE ART ASIA

FINE  
ART  
ASIA

HK CONVENTION &  
EXHIBITION CENTRE

[fineartasia.com](http://fineartasia.com)

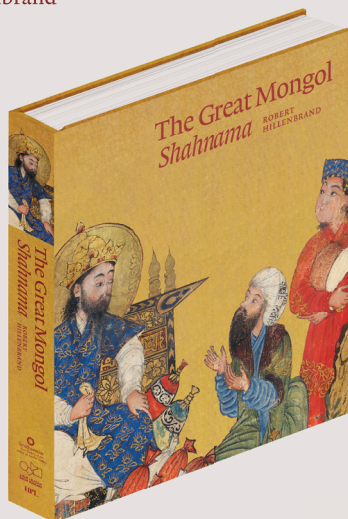


[cansarts.com](http://cansarts.com)



# The Great Mongol *Shahnama*

Robert Hillenbrand



There is general agreement that the dispersed Great Mongol *Shahnama* is the major manuscript of 14th-century Iran, and for many it is the definitive illustrated version of Firdausi's text – simply the greatest of all Persian illustrated manuscripts. In 1994, Professor Robert Hillenbrand delivered the Kevorkian Lectures in New York, and chose as his theme the paintings of this *Shahnama*. Since then he has worked steadily at refining his account of it, with this new publication representing the culmination of twenty-five years of research by one of the leading scholars of Islamic art in the world.



5. The Alexander Romance, Persian Style

The Alexander Romance is a collection of stories about the life and adventures of Alexander the Great. It is one of the most popular and influential works of Persian literature. The version of the Romance that is illustrated in this book is the one that was most widely read and copied in the 14th century. It is a version that was compiled by a Persian scholar named Firdausi. The illustrations in this book are taken from a manuscript of the Romance that was painted in the 14th century. The illustrations are in the Persian style, which is characterized by its use of bright colors and its focus on depicting the figures in a stylized, idealized manner. The illustrations in this book are a fine example of the Persian style of book illumination.



Available to pre-order at  
[shop.hali.com](http://shop.hali.com)

Co-published by Hali Publications Ltd.  
and the Freer Gallery of Art  
and Arthur M. Sackler Gallery,  
the Smithsonian's National Museum of Asian Art  
ISBN 978-1-898113-83-6

# HPL

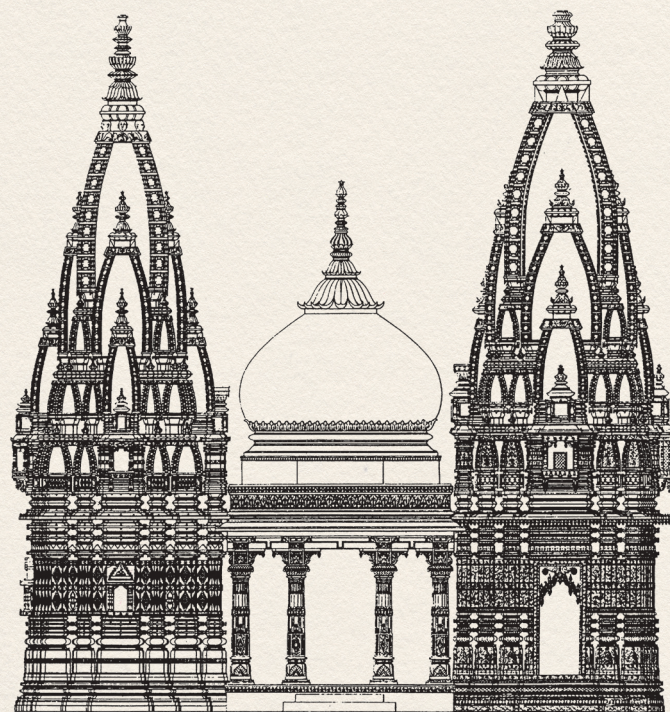
A MAGAZINE OF THE ARTS

# Marg

## Readings ON THE TEMPLE

FROM 75 YEARS OF MARG

The first in a series of readers on Indian art and culture.



Order/Subscribe at [www.marg-art.org](http://www.marg-art.org)



# ORIENTATIONS

Published in Hong Kong since 1969, *Orientalism* brings its readers articles by leading expert with the latest discovery on all aspects of the arts of East, South and Southeast Asia and the Himalayas.

We are pleased to offer digital in addition to print subscriptions.

A digital subscription gives you access to archive issues going back to 2004 and all print subscribers can enjoy complimentary digital access.

**Digital subscriptions: 1 year- US\$59.99**

**1 year** (6 issues)

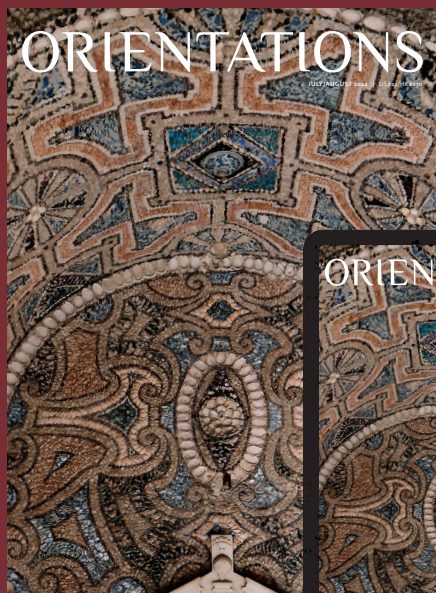
**US\$105** (overseas surface mail)

**US\$155** (overseas airmail)

**2 years** (12 issues)

**US\$198** (overseas surface mail)

**US\$298** (overseas airmail)



**Orientalism Magazine Ltd**

Unit 1501, 15/F, M Place, No. 54 Wong Chuk Hang Road, Hong Kong  
T: +852 2511 1368 F: +852 2507 4620 [info@orientations.com.hk](mailto:info@orientations.com.hk)



THE QUEEN'S GALLERY  
BUCKINGHAM PALACE



**'EXQUISITE'**

*Daily Telegraph*

UNTIL 26 FEBRUARY 2023

# JAPAN

## COURTS AND CULTURE

日本の芸術



ROYAL  
COLLECTION  
TRUST

**BOOK  
NOW**

La revista del coleccionista



[www.tendenciasdelarte.com](http://www.tendenciasdelarte.com)



V&A South  
Kensington

Book now  
Members go free

# 한류! HALLYU! THE KOREAN WAVE

Supported by



## EXPLORE KOREAN CREATIVITY

With additional support from



V&A

SPONSORS



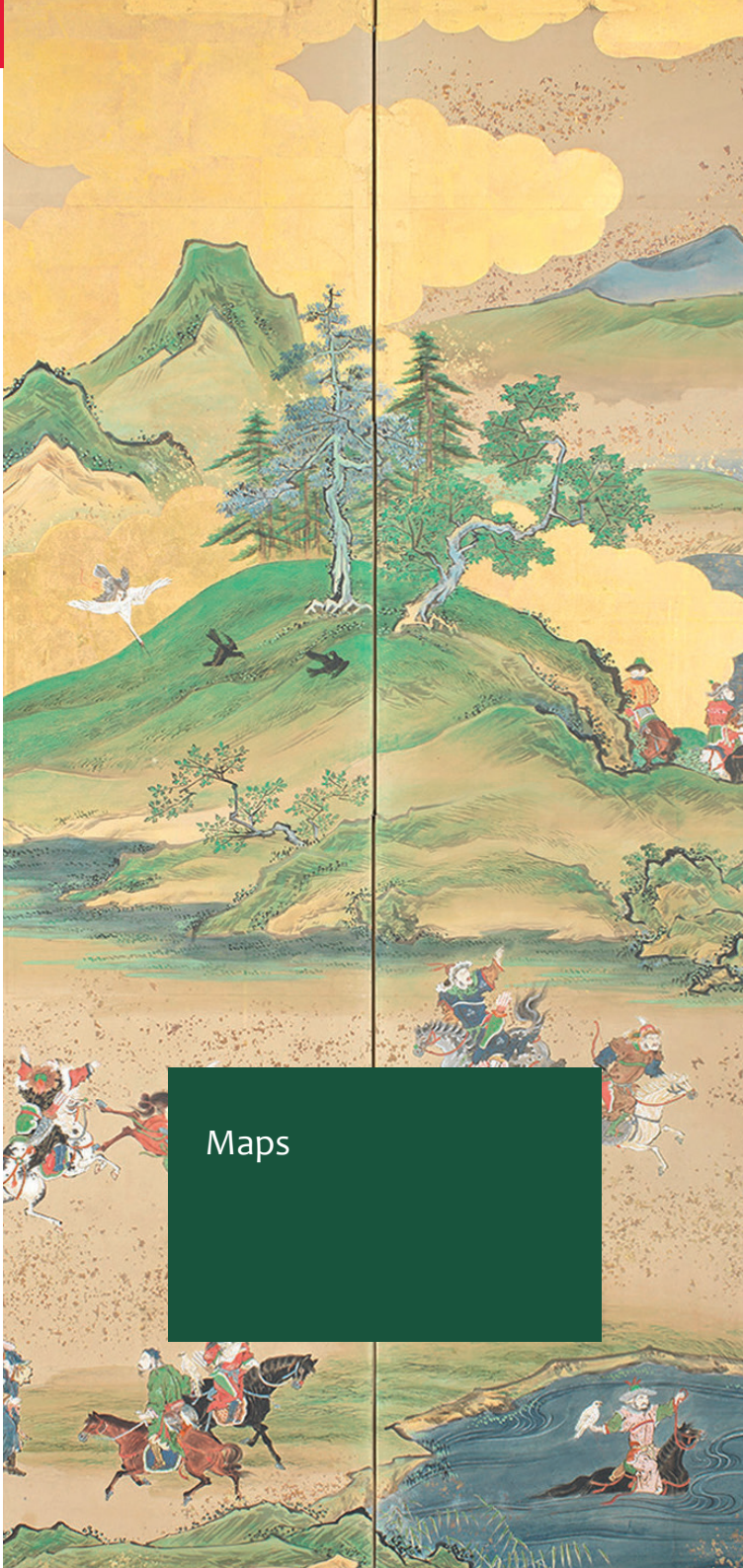
MUSEUM PARTNERS



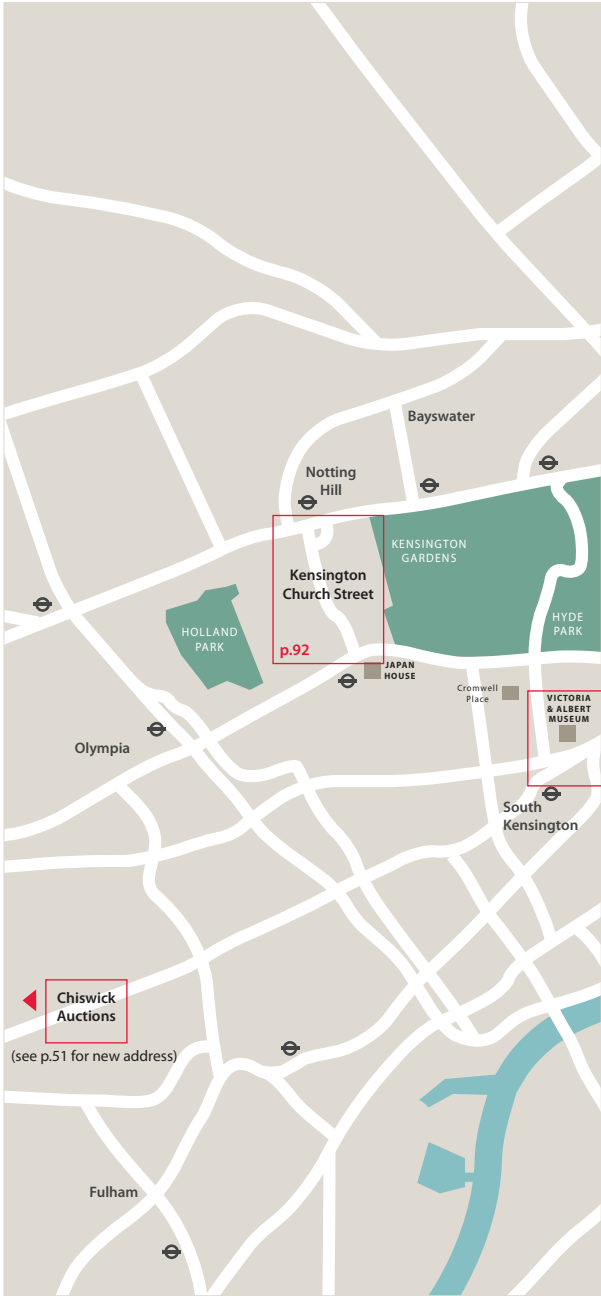
MEDIA PARTNERS



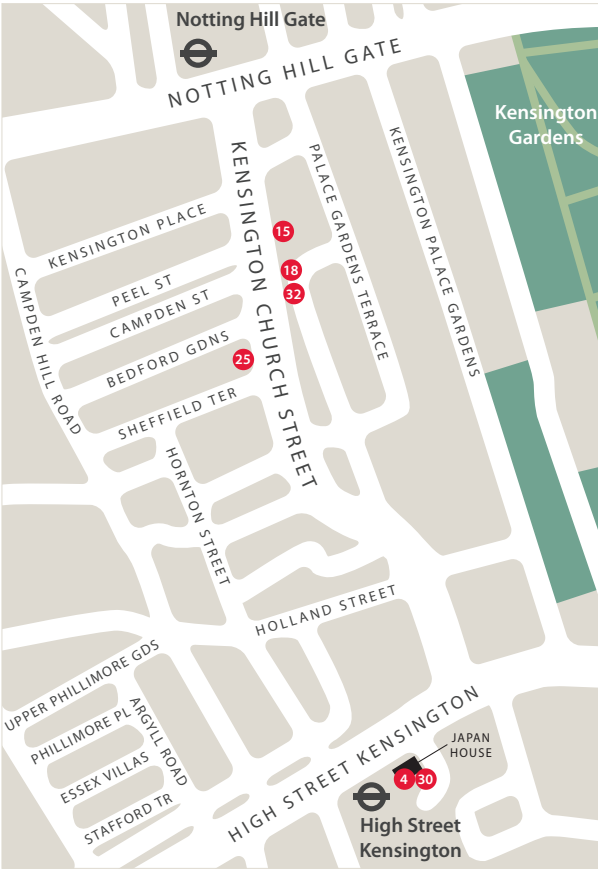




Maps



Kensington Church Street



Participants will hold Launch Evenings on 20th or 27th October, from 17.00 onwards. Please check individual entries for details.

MAP ABOVE

- 4 Rosemary Bandini Ltd
- 15 J.A.N. Fine Art
- 18 Marchant
- 25 Shahnaz Gallery
- 30 Tsukimi Gallery
- 32 Jorge Welsh Works of Art

Mayfair



Participants will hold Launch Evenings on 20th or 27th October, from 17.00 onwards. Please check individual entries for details.

MAP ABOVE

- 7 Eskenazi Ltd
- 14 Jonathan Hope
- 26 Shapero Rare Books
- 27 Jacqueline Simcox Ltd
- 28 Runjeet Singh
- 29 David Thatcher Samurai Art
- 34 Bonhams
- 40 Roseberys
- 41 Sotheby's



St James's

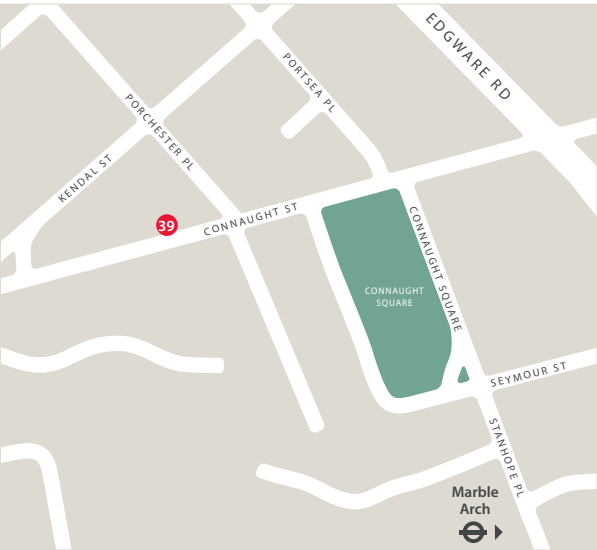


Participants will hold Launch Evenings on 20th or 27th October, from 17.00 onwards. Please check individual entries for details.

MAP ABOVE

- |                                      |                             |
|--------------------------------------|-----------------------------|
| 2 Raquelle Azran                     | 16 Lam & Co UK              |
| 5 Joost van den Bergh                | 17 Littleton & Hennessy     |
| 6 Rob Dean Art                       | 19 Susan Page Snuff Bottles |
| 9 Peter Finer                        | 20 Simon Pilling            |
| 11 Martyn Gregory                    | 21 Priestley & Ferraro      |
| 12 Grosvenor Gallery (Fine Arts) Ltd | 31 W. Shanshan 瑞然軒          |
| 13 Hanga Ten                         | 33 Zhi Zhi Arts Club        |
|                                      | 37 Christie's               |

Paddington



MAP ABOVE

- 39 Lyon & Turnbull

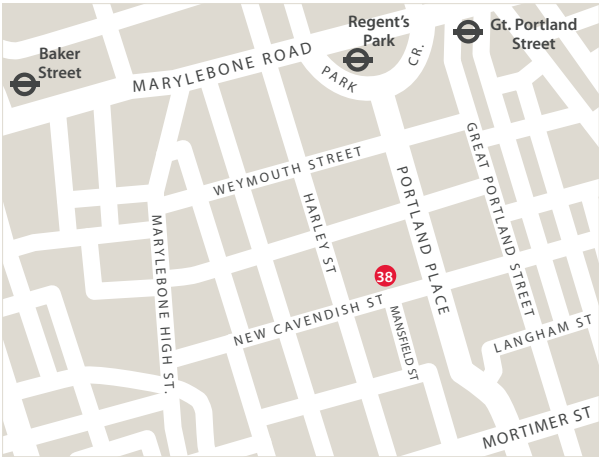
Knightsbridge & South Kensington



MAP ABOVE

- |                     |                          |
|---------------------|--------------------------|
| 1 Alisan Fine Arts  | 23 Schoeni Projects      |
| 10 Michael Goedhuis | 24 Anastasia Von Seibold |
| 22 SA Fine Arts     | 35 Bonhams Knightsbridge |

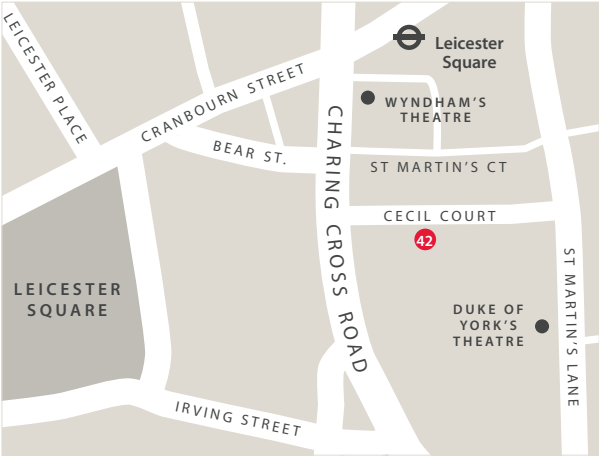
Marylebone



MAP ABOVE

38 Dore and Rees

Covent Garden



MAP ABOVE

42 Swords



Henry Howard-Sneyd	Chairman & Director
Behnaz Atighi Moghaddam	Director
Joost van den Bergh	Director
Rob Dean	Director
Rachel Hyman	Director
Simon Pilling	Director
Jacqueline Simcox	Director
Runjeet Singh	Director
Mark Slaats	Director
Cherrei Tian	Director
Alice Williamson	Director
Sophie Kempson	Programme Development Director



[facebook.com/asianartinlondon](https://facebook.com/asianartinlondon)



[@AsianArtLondon](https://twitter.com/AsianArtLondon)



[@asianartinlondon](https://instagram.com/asianartinlondon)



**Asian Art in London**  
(office address only)  
21 John Street  
London WC1N 2BF

+44 (0)7388 863 976  
[info@asianartinlondon.com](mailto:info@asianartinlondon.com)  
[www.asianartinlondon.com](http://www.asianartinlondon.com)



ASIAN ART  
IN LONDON

TWENTY-FIVE YEARS

Asian Art in London  
+44 (0)7388 863 976  
[info@asianartinlondon.com](mailto:info@asianartinlondon.com)  
[www.asianartinlondon.com](http://www.asianartinlondon.com)