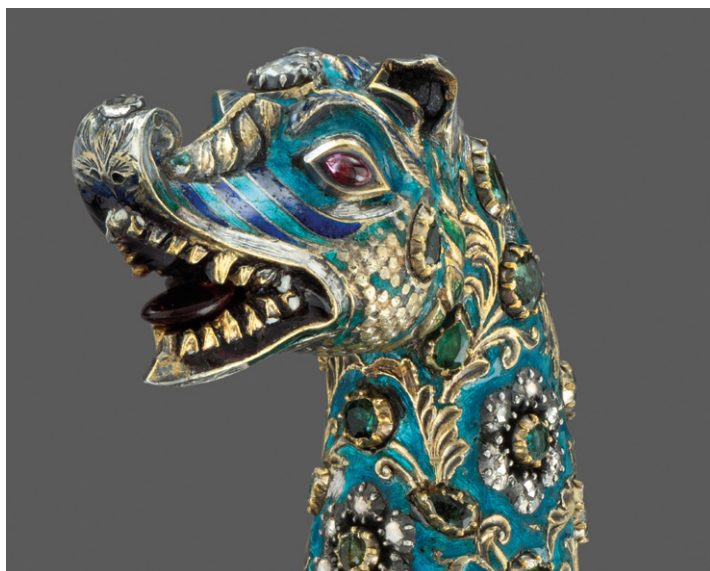


Indian & Islamic Art: 21 – 30 October
 East Asian Art: 28 October – 6 November

INDIAN AND ISLAMIC ART – SOME HIGHLIGHTS



*Illustration from a Markendeya Purana series Kangra or Mandi, India. c.1830–50. Pigments on paper, 13.7 by 20.6 cm. marble, 40.6 by 90.8 by 53.8 cm. **ROB DEAN ART, 35 BURY STREET, SW1***



*A sword or shamshir with the hilt in the form of a Makra (Hindu sea-creature). India, 19th century. Steel, gold, silver, enamel, diamonds, emeralds, green beryls, rubies and glass, 104 by 40.9 cm. **PETER FINER, 38-39 DUKE STREET, SW1***



*A 'dakon' or 'congklak' game board. Central Java (probably Surakarta), early 18th century. Wood, lacquer, pigments and gold leaf, 89 by 15 by 17 cm. **JONATHAN HOPE, 8 DUKE STREET, SW1***

For the second year running the Asian Art in London programme will be divided into two overlapping phases. This, the 24th iteration of AAL, will begin with a focus on Indian and Islamic art on 21st October, with East Asian art events commencing a week later on the 28th (with some dealers and salerooms inevitably selling in both categories). This celebration of Asian art will embrace ancient and modern works from the Middle East, India, Southeast Asia, the Himalayas, Central Asia, China, Japan, Korea and Vietnam.

As always there will be a large geographical spread of participants across London. This will include visitors to the city from the regions and abroad who will occupy temporary spaces. The largest concentration of exhibitions and auctions will be in Mayfair, St James's and Kensington.

For full details and to download the comprehensive AAL guide with maps, relevant museums, collections and Asian societies visit: asianartinlondon.com



An engraved shaffron (horse's head armour) with the basmala.

Ottoman Turkey or Anatolia, 16th century. Steel, 58.5 by 44 cm.

CHISWICK AUCTIONS, 1 COLVILLE ROAD, W3



Iznik border tile.

Ottoman Turkey, c.1570–80. Ceramic, 25.5 by 13 cm.

CHRISTIE'S, 8 KING STREET, SW1

Indian & Islamic Art: 21 – 30 October
East Asian Art: 28 October – 6 November

EAST ASIAN WORKS OF ART – SOME HIGHLIGHTS

Geometric panel.

China, Ming dynasty, 15th century. Silk brocade, 70 by 65 cm.

JACQUELINE SIMCOX,
106 NEW BOND STREET, W1



Head of Buddha Sakyamuni.

Thailand, Chang Mai Lan Na kingdom, 15th century. Bronze, height 40 cm.

MARCEL NIES
ORIENTAL ART,
27 DOVER STREET, W1



A carved Yaozhou ware bowl. China, Northern Song Dynasty (960–1127). Ceramic, diameter 9.5 cm. **LITTLETON & HENNESSEY ASIAN ART, 1 PRINCES PLACE, SW1**



A carved treasure box. China, Qianlong (1736–95). Cinnabar lacquer, width 21 cm. **SWORDERS, 15 CECIL COURT, SW2**



Vase, by Yonezawa Hisashi. c.1960. Ceramic, width 32 cm. **JOOST VAN DEN BERGH, 21 CORK STREET W1**



A pair of famille rose fish bowls. China, Qing Dynasty, Yongzheng period (1723–35). Ceramic, diameter 62 cm. **DUKE'S, DORCHESTER (check for London location)**