



ASIAN ART IN LONDON 2020 15 OCTOBER - 7 NOVEMBER

INDIAN & ISLAMIC WORKS OF ART



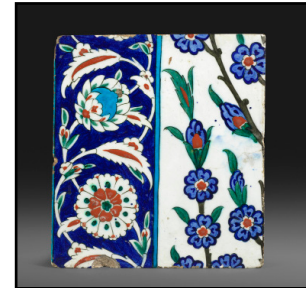
BONHAMS

Detail from a fine album of sixty watercolour paintings of Sikh subjects, presented to W. Dunlop in Peshawar, January 1st, 1855
Probably Lahore, circa 1850
Watercolour on watermarked paper, Gold, red and blue margins, brown leather binding with floral motifs in a North Indian or Kashmiri style



CHRISTIES

An Intact Iznik Pottery 'Grape' Dish
Ottoman Turkey, Circa 1565
33.5cm. diam.



FORGE & LYNCH

Iznik pottery tile
Turkey, 1570-80
24.3 by 22 cm.



FRANCESCA GALLOWAY

Jagat Singh II (r.1734-1751) enjoying a dance performance
Udaipur, circa 1740. opaque pigments and gold on paper
Painting: 23.75 x 33 cm; with red border: 26 x 35 cm



GROSVENOR GALLERY

Francis Newton Souza, Volvox Head, 1974. Oil on board
50.8 x 40.6 cm



JOHN ESKENAZI LTD.

Avalokitesvara is also known as Padmapani
Eastern India, Bihar, Pala period, first half 11th century
Dark grey chlorite, Height 69cm



JOOST VAN DEN BERGH

Kalu Ram (Jaipur circa 1945 - 2010)
Fantastical animal study, signed lower right. Gouache and ink on paper, laid down on fabric
Height: 32 cm, Width: 28 cm



KAPOOR GALLERIES

The Kurma Avatar: Samudra Manthan (The Churning of the Ocean)
Folio from the Gita Govinda
Attributed to the master artist Manaku of Guler c. 1735
Gouache with gold and beetle wing cases on paper. Verso: Three lines of Sanskrit text in devanagari characters, alternating black and red
8 x 12 in. (20.3 x 30.5 cm.)



NAGEL AUCTION HOUSE

A very rare Ningxia 'RKO' Rug
China, 18th ct.
130 x 67 cm



ASIAN ART IN LONDON 2020 15 OCTOBER - 7 NOVEMBER

INDIAN & ISLAMIC WORKS OF ART



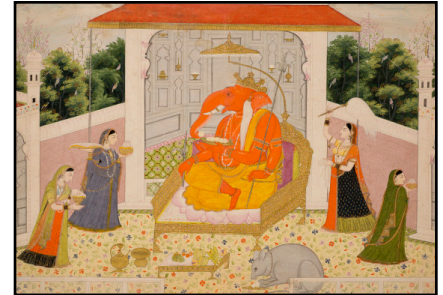
PETER FINER

Dagger, Khanjar,
Early 19th century
India, probably Jaipur.



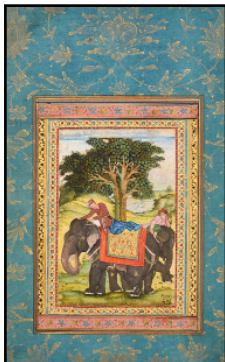
RITA DIXIT INDIAN MINIATURES

The Churning of the Ocean, (sanskrit Samudra Manthan) is one of the most iconic episodes in Indian mythology. A timeless image from the Bhagvata Puranas captured in miniature. This example is from Kangra School mid/ late 19th century.



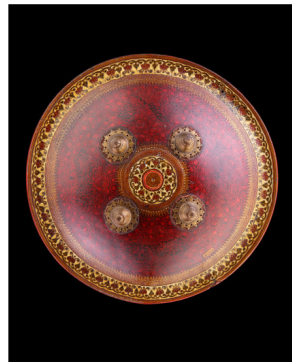
ROB DEAN ART

An illustration to an unidentified series
Ganesha Enthroned
Kangra, India
Opaque pigment on paper height-
ened with gold
Circa 1800
29.7 x 41.5 cm.



ROSEBERYS

A Mughal miniature of a two elephants
and their riders in a landscape, India,
circa 1600-1610, album page 31.5 x
19cm.



RUNJEET SINGH

Dhal (shield)
Gujarat, India
19th century
Diameter: 370mm (14.5 inches)



SUE OLLEMANS

A Diamond Ruby and Gold Ring.
Bali 19th Century
Size :US5
Weight: 9 grams



ASIAN ART IN LONDON 2020 15 OCTOBER - 7 NOVEMBER

EAST ASIAN WORKS OF ART



BONHAMS KNIGHTSBRIDGE

A pair of yellow-ground, aubergine and green-glazed 'dragon' dishes Kangxi six-character marks and of the period, 1662-1722
Each 13.2cm (5 1/4in) diam. (2).



BONHAMS

A large court painting of ladies playing Go, 18th century
99 x 155 cm



CHRISTIE'S

Property from a Distinguished European Collection
An Imperial Finely-Carved and Reticulated Spinach-Green Jade Brush Pot
Qianlong Period (1736-1795)
6 7/8 in. (17.5 cm.) diameter



DUKES

Chinese jade treasure sack.
Pair of yellow ground 'dragon' bowls.
Kangxi six character mark and of the period



ESKENAZI.

A Gilt-bronze Standing Figure of an Acuoye Guanyin
Yunnan, Dali Kingdom, 12th century
Height: 45.7cm



GRACE TSUMUGI

Nishimura Hikobei of Zohiko IIV
Set of Lacquer Writing Box and Table with Primrose and Morning Glory
Details inlaid in Shell
Writing box 4.5(H) x 24.8 x 19 cm
Writing table 12.3 (H) x 60.3 x 36.5cm
Circa 1917



GROSVENOR GALLERY

Zimbiri, Circle, 2020
Saa-tshen on rhay shing (traditional Bhutanese earth paint on Bhutanese canvas)
161.7 x 166.6 cm (63.7 x 65.6 in)



HANGA TEN

Daniel Kelly
Whirlpool, 2020
Woodblock on Arches hot press water-colour paper
53 x 75 cm



J.A.N. FINE ART

A Fine Blue And White Rouleau Dragon Vase
Qing Dynasty 18th/19th century.



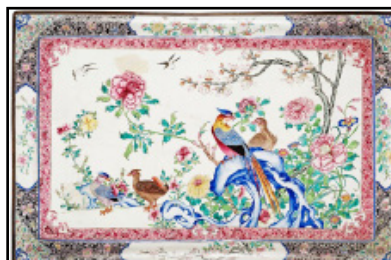
ASIAN ART IN LONDON 2020 15 OCTOBER - 7 NOVEMBER

EAST ASIAN WORKS OF ART



JACQUELINE SIMCOX

An imperial yellow silk ruyi-shaped cushion, embroidered with a central lotus flower, surrounded by trellising and other flowers in polychrome silks. The border with a key-fret design.
Width: 50 cms (19 3/4 inches)



JOHN BERWALD

An extremely large Canton enamel tray
Qianlong period 1736-1795
Length 34 1/2 inches width 22 1/2 inches



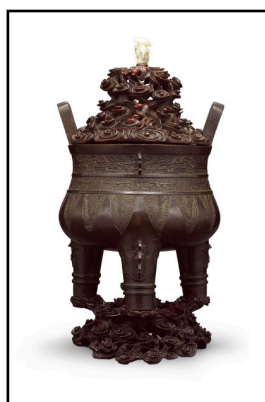
JORGE WELSH.

Tiered Box
Porcelain decorated in overglaze iron red and gold
China - Ming dynasty (1368-1644),
16th century
H. 15 cm W. 13.5 cm



LAM GALLERY

A fine and rare jingbai lobed ewer with cover
Song Dynasty (960-1279)
Height: 23.5 cms.



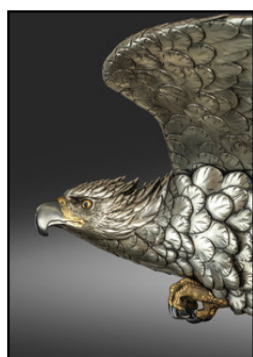
LITTLETON & HENNESSY

An important large archaistic bronze tripod censer (Song/Yuan dynasty, 12-14th century) the wood stand and cover
18th century
Dimensions: the censer 30 cm diam.; 41.5 cm. high



LYON & TURNBULL

A rare mother-of-pearl inlaid black lacquer 'Pavilion of Prince Teng' screen
Ming Dynasty, 16th-17th Century
93cm x 95.5cm



MALCOLM FAIRLEY

A silvered bronze study of an eagle in flight with wings outstretched suspended on three chains, its talons drawn up beneath, details in shakudo and gilt.
Wingspan 107cm, Meiji Period
c.1890



MARCHANT

Chinese jade treasure sack.
3 1/2 inches, 8.9 cm high; 3 3/8 inches, 8.6 cm wide.
Qianlong period, 1736-1795



MICHAEL GOEDHUIS

Le Chevalier
Porte de la Paid Céleste I, 2019
Ink and mixed media on canvas
150 x 150 cm (59 x 59 inches)



ASIAN ART IN LONDON 2020 15 OCTOBER - 7 NOVEMBER

EAST ASIAN WORKS OF ART



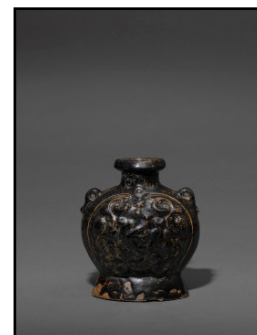
NAGEL AUCTION HOUSE

A pair of "southern official's hat" huanghuali armchairs with metal fittings
China, Ming/early Qing dynasty



PETER FINER

A Rare Tibetan Medieval Tibetan Quiver, 15th - 16th century



PRIESTLEY & FERRARO

A black-glazed pilgrim flask
Sui dynasty (581-618), or early Tang dynasty (618-906)
Height: 23.2 cm, 9 1/8 inches



ROSEBERYS

ZHU DA (c. 1626 - 1705), ink on paper, hanging scroll, two birds on a branch, 35.2 x 55.3cm



RUNJEET SINGH

Tibetan Sword.
18th - 19th Century
Length: 970mm (38 1/4 Inches)



SIMON PILLING

WRITING BOX suzuribako by
HIRAISHI Takashi (1910-89)
Early Showa period, 1930s
Gold makie, mother-of-pearl, raden, inlays Silver suiteki and bindings
24 (dia.) x 4.2 cm.



SOTHEBY'S

A rare large blue and white 'dragon' dish
Qianlong seal mark and period



SWORDS

A Tibetan bronze figure, 13th-14th century, of a monk wearing a long robe with a diapered border, seated cross-legged on a double lotus pedestal, his hands in Bhumiparsha mudra, 10cm high