

ANTIQUQUE

COLLECTING

NOVEMBER 2019

The **BOOM IN ASIAN ART**

Discover the £1 charity shop
buy set to make £80,000

Soviet artists

Behind the scenes
at an exhibition of
Russian lithographs

COLLECTING SPECIAL

CHINESE EXPORT SILVER

Why now is the
time to buy



Plus:

**IN THE PSYCHIATRIST'S CHAIR:
INSIDE THE HEAD
OF A COLLECTOR**

THE SPOOKY WORLD
OF HORROR PROPS

ALL THE RAJ
WESTERN PAINTINGS
OF EARLY INDIA

CALL TO ARMS:
WHEN TO SELL
MILITARIA
SEE PAGE 32



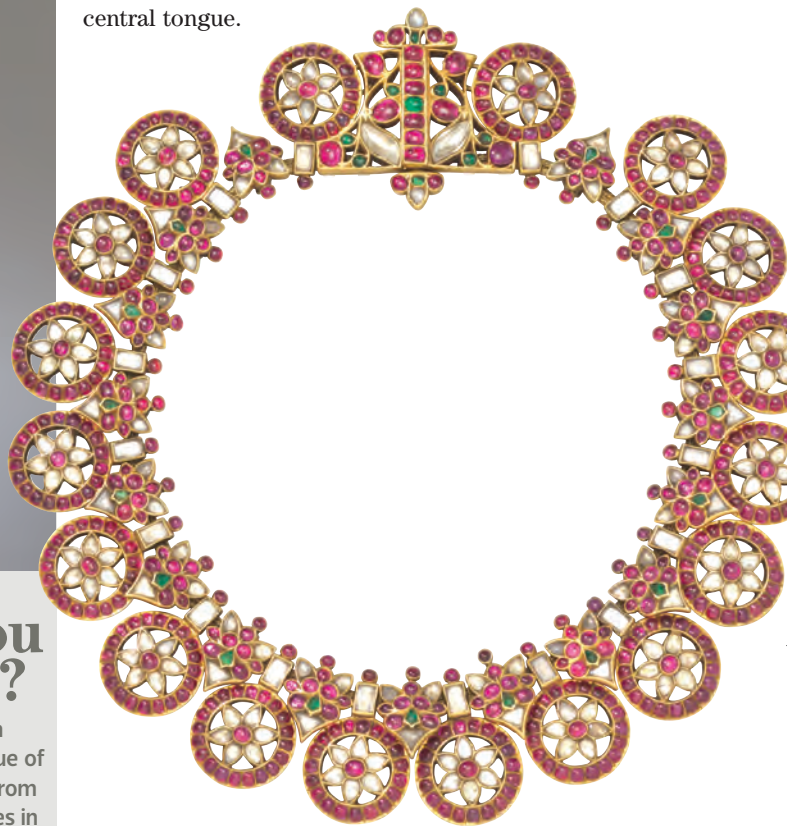
Simon Ray

What: Exhibition called *Indian & Islamic Works of Art*

Where: 21 King Street, St James's, SW1Y 6QY

When: November 1-30

Look out for: This 19th-century white sapphire and ruby necklace from southern India. The combination of jewels in the composite flower-head resembles a *kirtimukha*, a mythical beast with protruding eyes and ears, horns and open mouth with fangs separated by a central tongue.



EAST MEETS WEST

We preview some of the highlights from the 22nd edition of Asian Art in London from October 31 to November 9, uniting galleries, auction houses and pop-up dealers

Did you know?

Chinese craftsmen learnt the technique of painted enamels from French missionaries in the late 17th and early 18th centuries, who brought specimens of the famous Limoges enamels.

Most Chinese painted enamels come from Canton, but, in the early 18th century, they were also produced in Peking workshops, catering to the discerning taste of the court.

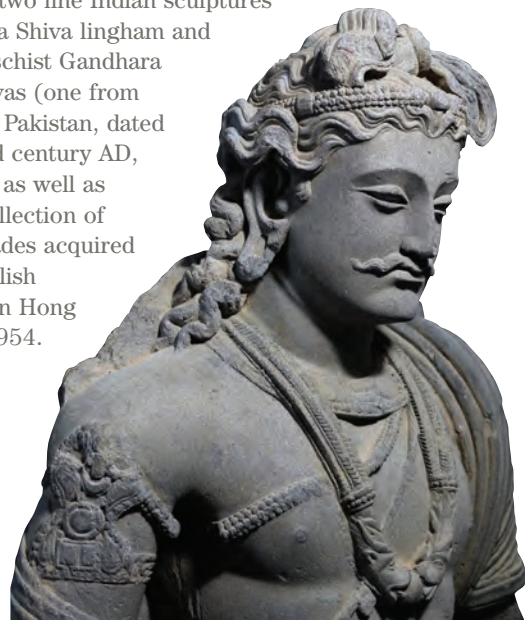
Jonathan Tucker and Antonia Tozer Asian Art

What: An important group of sculptures from Gandhara, India, southeast Asia and China

Where: 37 Bury Street, St James's, SW1Y 6AU

When: October 31 to November 22

Look out for: A collection of Khmer and other southeast Asian sculptures from the estate of a British collector; two fine Indian sculptures including a Shiva lingham and two grey schist Gandhara Bodhisattvas (one from northwest Pakistan, dated 2nd to 3rd century AD, pictured); as well as a small collection of Chinese jades acquired by an English collector in Hong Kong in 1954.



Ben Janssens Oriental Art

What: An exhibition titled *Mythical Animals*

Where: M&L Fine Art, 15 Old Bond Street, W1S 4AX

When: October 31 to November 8

Look out for: This Qing dynasty (Qianlong period, 1736-1795) Canton enamel wine pot (above) with a domed cover, curved spout and tall, looped handle.



Marchant

What: A display of Qing porcelain from three private collections

Where: 120 Kensington Church Street, W8 4BH

When: October 30 to November 15

Discover more: The exhibition includes pieces from three collectors, the first of whom is Tang Shaoyi, who became the Republic of China's first prime minister in 1912 – before he was assassinated in 1938 by men posing as antique dealers. The other two are the French banker Henry Mazot who lived in Peking in the 1920s and the Kangxi expert Jeffrey Stamen.

The imperial Kangxi yellow bowl (pictured middle) is from Mazot's collection; the Kangxi blue baluster vase is from the Jeffrey Stamen collection (left); while the Yongzheng red bowl (right) was owned by Tang Shaoyi.



Sydney L. Moss

What: An exhibition entitled *Inking Identity: Calligraphy of the Obaku School*

Where: 12 Queen Street, Mayfair, W1J 5PG

When: October 31 to November 9

Discover more: The exhibition traces the lasting influence of the extraordinary calligraphy of the Obaku School founded by Ingen Ryki (1592–1673). The illustration below of two crabs is the work of Sokuhi Nyoitsu (1616–1671), a follower of Ingen Ryki, greatly admired in Japan for the understated strength of his brushwork.



Jorge Welsh Works of Art

What: *Treasures: The Vases of the 'Hundred Treasures', Pocket Treasures: Snuff Boxes from Past Times, Timeless Treasure: The Runic Calendar Staff*

Where: 116 Kensington Church Street, W8 4BH

When: November 2-9

Look out for: *Treasures* explores some of the most unusual and high-quality orders produced by Chinese artists for Western customers, including a pair of Yongzheng famille rose vases; one of the largest collections of 18th-century Chinese snuff boxes on record (left); and a rare enamel-on-copper staff.