

# ASIAN ART *in* LONDON 2018

Asian Art in London (AAL) is now in its 21st edition and the event runs from 1 to 10 November in locations across London. This year 41 dealers and galleries from the UK and overseas are showcasing a range of works of art from South, Southeast Asia, Central Asia, China, Japan, Korea, the Himalayas and the Islamic world, dating from antiquity to the contemporary, along with sales of Asian art at local and international auction houses. Alongside the selling exhibitions, visitors can attend the plethora of museum exhibitions, lectures, gallery talks, study days and conferences which coincide with Asian Art in London.

The Late Night Openings start with Kensington Church Street on 3 November, St. James's on 4 November and Mayfair on 5 November, all from 5-9pm. Not all galleries participate in these late openings, so refer to the AAL website listings for individual gallery's details. The AAL directory, includes maps and an events calendar and can be found in members' galleries, or can be downloaded from their website.

Alongside the gallery shows, there are several museum exhibitions and events that coincide with Asian Art in London week. **In London:** British Library: *Beyond Timbuktu: Preserving the Manuscripts of Djenné, Mali*; Brunei Gallery (SOAS): *Master – An Ainu Story*; and *From Kabul to Kolkata, Memories and Identity*; Japan House: *Subtle Takeo Paper Show*; Korean Cultural Centre: *Yunchul Kim: Dawns, Mine, Crystal*; Victoria & Albert Museum: *Jameel Prize 5*.

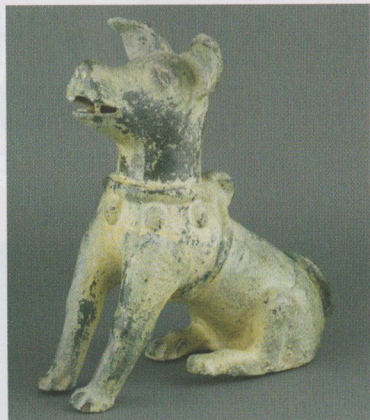
**Elsewhere in the UK:** Ashmolean Museum (Oxford): *Plum Blossom and Green Willow: Surimono Poetry Prints*, and *Lui Shuo-kwan: Abstraction, Ink and Enlightenment*; Museum of East Asian Art (Bath): *Contemporary Chinese Art by Zhang Yanzi*; Oriental Museum (Durham): *Hidden Women*; Pitt Rivers Museum (Oxford): *Performing Tibetan Identities: Photographic Portraits by Nyema Droma*; St Hughes College, Dickson Poon China Centre Building (Oxford): *Shen Fuzon, the First Chinese Visitor to Oxford*; Russell-Cotes Art Gallery and Museum (Bournemouth): *China: Through the Lens of John Thomson (1868-1872)*; The Whitworth (University of Manchester): *Four Corners of One Cloth: Textiles from the Islamic World*.

**Book launch:** On 4 November: *Catalogue to the Oriental Ceramic Society Exhibition China Without Dragons*, at Sotheby's New Bond Street. For lectures and other events, see the Asian Art in London website.

• The annual gala party is on 1 November – at a new venue for the event, *The Magazine*, Serpentine Sackler Gallery, Hyde Park in



#D-133 by Tadasky (Tadasuke Kuwayama, b 1935), acrylic on canvas, signed, titled and dated 1966 on the reverse, framed, 173.5 x 173 cm. Provenance: the Jiro Yoshihara Collection, Gregg Baker Asian Art



Chinese green glazed pottery model of a seated dog, China, Eastern Han dynasty, 1st/2nd century, China, height 33 cm, Marchant

Kensington Gardens. Tickets (£80) must be pre-booked through Asian Art in London, [asianartinlondon.com](http://asianartinlondon.com).

## LATE NIGHT OPENING KENSINGTON CHURCH STREET

Saturday 3 November, 5-9 pm  
Gregg Baker Asian Art, Marchant, Jorge Welsh Works of Art

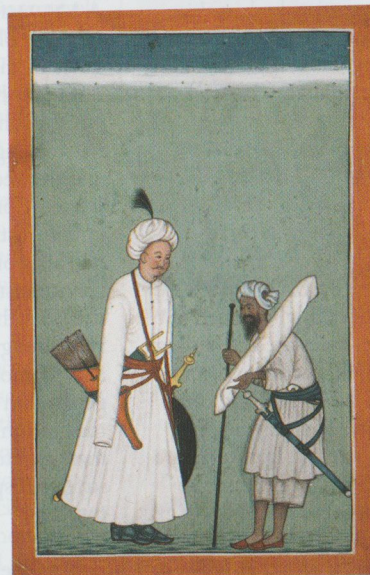
Gregg Baker is showing new acquisitions at the gallery, including a selection of post-war art, alongside the traditional works in which the gallery specialises. Post-war artists included in the show include Kokuta Suda (1906-1990), Tadasky (Tadasuke Kuwayama, b 1935), and Key Sato (1906-1978). At Marchant's the exhibition is *Chinese Ceramics from Han to Song*, the first exhibition in their 93 years dedicated entirely to early Chinese ceramic wares. A highlight of the show is a

large Tang-dynasty figure of a falconer, which was de-accessioned from the Manno Museum of Art in Japan. Other works include a *dingyao* dish, and two Jian ware tea bowls. Models of animals are always attractive and Marchant has an example of a seated Han-dynasty dog, a rarity, as few have been found in the seated position. *Through Distant Eyes: Portraiture in Chinese Export Art* is the title of Jorge Welsh's exhibition that includes a saucer with a portrait of William IV of Orange-Nassau from the Qianlong period and a punch-bowl with a portrait of Fanny Murray from the Qing dynasty.

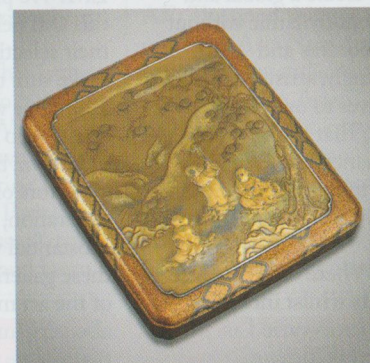
## LATE NIGHT OPENING ST. JAMES'S

Sunday 4 November  
Raquelle Azran Vietnamese Art, BachmannEckenstein Japanese Art, Joost van den Bergh, Brandt Asian Art, Cohen & Cohen, Rob Dean Art, Malcolm Fairley, Peter Finer, Genrokuart, Grosvenor Gallery, Robert Hales, Hanga Ten, Littleton & Hennessy, Martindale Chinese Art, Simon Pilling, Priestley & Ferraro, Simon Ray Indian & Islamic Works of Art, Roell Fine art, Jacqueline Simcox, Runjeet Singh, Davinder Toor, Grace Tsumugi Fine Art, and Jonathan Tucker & Antonia Tozer Asian Art

Raquelle Azran is showing *Indochine Scenes: Vietnamese and French Paintings from the 1900s*. BachmannEckenstein Japanese Art specialises in Painting, calligraphy, ceramics from Momoyama to Taisho period, 16th-early 20th centuries and their show explores the *Japanese Eccentrics*. A selection of Chinese and Japanese works of art are on show at Brandt Asian Art. Joost van den



An Archer and his Servant, Mandi, India, 18th century, tempera on paper, Rob Dean Art



Gold lacquer suzuribako (writing box) finely worked in gold inlay with three karako (Chinese boys), unsigned, Meiji period, circa 1890, 27.5 x 23.8 cm, with double storage box, Malcolm Fairley

Bergh specialises in Indian and this year's exhibition is entitled *Indian Art from Bactrian and Classical* and includes a selection of Gandharan sculpture. Chinese export specialists, Cohen and Cohen, is offering a private collection this year: *The Golden Gate Collection of Chinese Export Porcelain*. Rob Dean, another Indian specialist is exhibiting a group of



Javanese kris, seven lok blade, hilt covered with gold in the form of a raksasa, set with gems, 16/17th century, Robert Hales



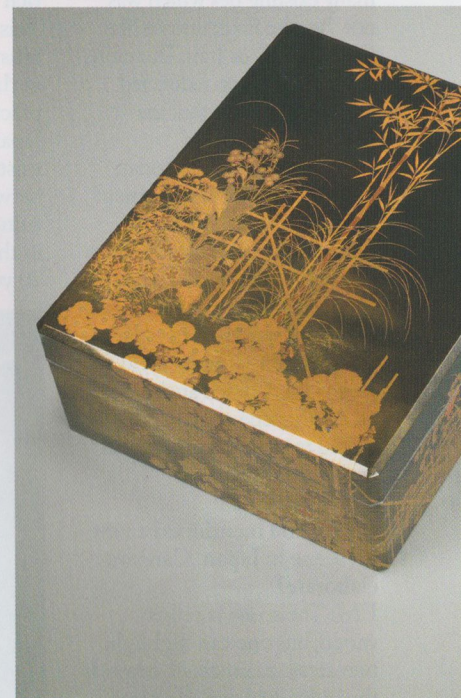
Green and straw-glazed pottery watch tower, China, Liao dynasty (907-1125), height 115 cm, Littleton & Hennessy



Carved amber deer in recumbent form, China, 17th century, Martindale Chinese Art



Paper storage box, ryoshibako, Nanbokucho period, 14th century, gold makie, gilt metal fittings 30.3 x 39.3 x 10.8 cm, Simon Pilling

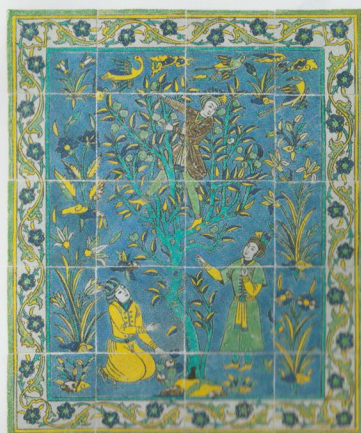


Saucer with a Portrait of William IV of Orange-Nassau, China, Qing dynasty, Qianlong period (1736-1795), decorated in Holland, circa 1747, porcelain decorated in grisaille and overglaze polychrome enamels applied in Holland, diam. 20.5 cm, Jorge Welsh





Carved ebony and ivory inlaid armchair, crest of Irish FitzGerald Family, the Knights of Glin, Coromandel Coast, Madras, late 17th century, Roell Fine Art



Apple Picking in an Orchard, 20 tiles in a panel, Iran, Safavid, 17th century 118 x 95.3 x 2.2 cm, Simon Ray



Black stone torso of a standing Buddha, Northeast India, probably Bihar, Pala period, 9th/10th century, height 61 cm, Tucker Tozer Asian Art

Set of lacquer writing and document boxes with Spring and Autumn flowers, plants, gulls, and waves by Koda Shuetsu (1881-1933), Taisho era (1912-1926), circa 1920, document box: 15.5 x 42.8 x 34.5 cm, writing box: 5.0 x 26.4 x 23.3 cm, Grace Tsumugi Fine Art

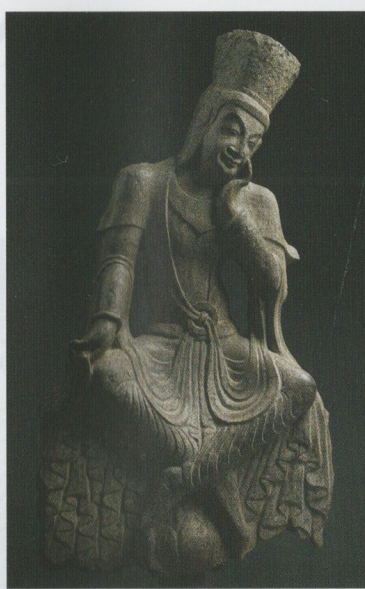


*Classical Indian Paintings from the Court of Mandi.* The exhibition highlights the changing styles and aesthetic that existed within the court of Mandi over a 200-year period. These works reveal a constant evolution of styles and formats that depended upon both the whims of patrons, and the personal genius of individual artists based at the court. Paintings from this period tended to be produced anonymously, leaving the attribution of specific artists to paintings a matter of academic debate, however, included in the current exhibition are two rare works which are inscribed on the reverse, and specifically identify the artists who produced the works. The exhibition thus brings to light two previously unpublished works by the Mandi Artists, Sajnu and Mohammadi, and extends the understanding of the influence of these artists at the Mandi court atelier in the early 19th century.

**Malcolm Fairley's** exhibition consists of recent acquisitions, including metalwork, enamels and lacquer, textiles and ceramics – all from the Meiji period. A highlight of the show is a collection of fine enamels by Namikawa Yasuyuki. Catalogue available. Another Japanese specialist, **Grace Tsumugi Fine Art** is featuring a selection of Japanese metalworks, lacquers, enamels, *inro* and porcelains from the late Edo, Meiji and Taisho periods, including works made by Imperial Court Artists such as Shibata Zeshin, Kagawa Katsuhiko, Tsukada Shukeyo, Namikawa Yasuyuki and Seifu Yohei III. One of the highlights in the exhibition is a matching lacquer set of writing and document boxes with a dramatic contrast of the exterior and the interior; made by Koda Shuetsu (1881-1933) circa 1920, the covers are decorated with flowers in a Japanese garden in Spring and Autumn while the reverse in rich gold lacquer with stylised waves and sea birds. Also on offer is a fine silver box inlaid in mixed metal with a pair of pheasants on riverbank, skilfully chiselled and carved by Funakoshi Shunmin (1868-1940), circa 1900.

**Grosvenor Gallery** specialises in modern and contemporary Indian art and this year are having an exhibition of miniatures by the Delhi-based artist Olivia Fraser. Fraser, who was born in London in 1965 and raised in the Highlands of Scotland, has lived and worked in India since 1989. Deeply interested in the techniques and vocabulary of traditional Indian miniatures, she combines mineral and plant pigments and handmade paper with forms and ideas inspired by modern Western art.

At **Hanga Ten** the show concentrates of the work of Nana Shiomi and her woodcuts: *Nature and Mirror Images*. In the same gallery, more Japanese work is on offer from **Simon Pilling** with a show entitled *Flora & Fable*. The show focuses on the symbolism of plants in Japanese art, presenting works from 14th-century Buddhist imagery through to contemporary pieces. Each embodies the artist's ambition to capture emotional qualities – ranging from the spiritual enlightenment of the lotus flower to the sadness and loss associated with autumn as harbinger of winter. Also in the exhibition are the works of three rising contemporary artists – lacquerists: Ando Sacko and Fujino Seiichiro, and ceramicist Inayoshi Osamu. Each is striving to capture an explicit harmony with nature with their goal being to reignite traditional values, leading to greater ecological,



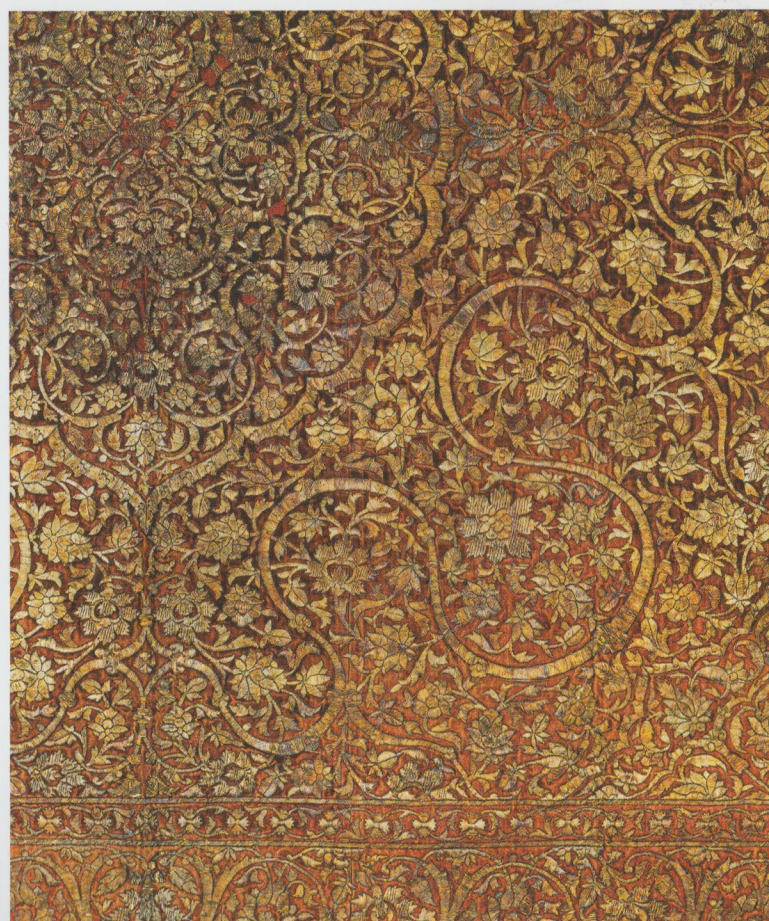
Limestone Maitreya, Northern Wei dynasty, early 6th century, Longmen cave temples, Henan province, China, height 61 cm, Eskenazi Ltd

social and cultural wellbeing through a heightened empathy with the natural world.

New to Asian Art in London is **Robert Hales**, a specialist in Oriental and Islamic arms and armour. Highlights include some fine Indonesian *kris* and kris stands, and items from India, Persia, the Ottoman Empire, Tibet and Nepal, including swords, daggers, shields, pistols, helmets and other fine decorative items. Highlights include a North-Indian, 18th/19th-century sword *shamsir* from Rajasthan with a fine Iranian watered steel blade. The silver-gilt hilt is decorated with predominantly turquoise enamel with dark blue and green highlights and set with clusters of diamonds and pale green emeralds. And an early Javanese Kris with the hilt covered with gold and is in the form of a *Raksasa* set with several small gems.

**Littleton & Hennessy** are presenting a range of Chinese works of art and scholar's objects ranging from the Tang to the Qing, including a green and straw-glazed pottery watch tower from the Liao dynasty, an important chestnut-glazed Tang pottery horse and an important Qianlong mark and period double-gourd vase with moulded floral design, formerly in the collection of the Indianapolis Museum of Art. Another new exhibitor is **Martindale Chinese Art**, who is showing a collection of Chinese works of art, including objects from private European collection. A highlight is a carved amber deer in recumbent form dating to the 17th century, alongside a white and russet jade carved pebble of a Buddhist lion dog dated to the Kangxi period (1662-1722).

**Simon Ray**, as usual, holds an Indian & Islamic Works of Art show and among the objects on offer are a Mughal 17th-century velvet fragment that probably would have been used as a floor spread, a Safavid tile panel, 17th century, depicting apple picking in an orchard, a 17th-century, a watercolour from Shiraz, circa 1560, that depicts 'Ardashir Recognising his Son Shapur in the Polo Game', an illustration from the *Shahnama* of Firdausi, a Northern Indian tile with floral sprays rising from a vase, and a selection of Indian 18th-century paintings. **Roell Fine Art's** exhibition is *From Distant Shores*, and explores exotica and cross-cultural art collected and commissioned by European travellers and settlers in far-away lands since the 'Age of Discoveries' up until the 19th century. Highlights include a carved ebony and ivory inlaid armchair. In the crest rail the coat of arms of the Irish FitzGerald family of the Knights of Glin,



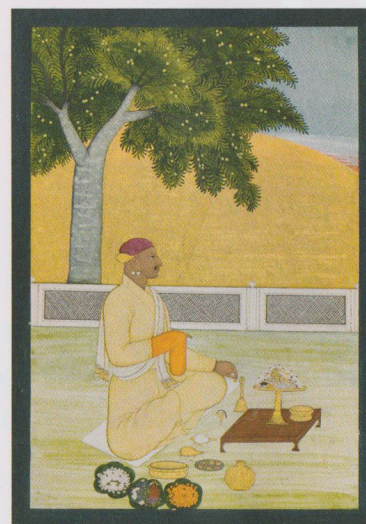
A royal canopy with cloud bands and arabesques, Golconda, Deccan, India, circa 1580, gold and silver wire on velvet, 170 x 130 cm, Prahlad Bubbar



Southern Song dynasty celadon vase, height 15.5 cm, David Baker

Coromandel Coast/Madras, late 17th century and a lacquer plaque depicting St Petersburg, made in Nagasaki, Japan, circa 1788.

**Jonathan Tucker and Antonia Tozer** are presenting a selection of sculptures and other works of art from Gandhara, India, China and Southeast Asia. Among this year's highlights are an 8th-century Dvaravati style Buddha from Thailand, a diverse group of other Buddhas from Southeast Asia, two



Raja Dalip Singh of Guler performing Puja, Guler, circa 1740, attributed to Pandit Seu, opaque pigments and gold on paper, Folio: 27 x 19.6 cm, Francesca Galloway

Gandhara sculptures including a schist figure of Atlas and a stucco Maitreya and a large and powerful Pala torso of Buddha.

#### LATE NIGHT OPENING MAYFAIR

Monday 5 November

David Baker Oriental Art, Berwald Oriental Art, Prahlad Bubbar, Eskenazi Ltd, Sam Fogg, Francesca Galloway, Ben Janssens Oriental Art, Roger Keverne, Sydney L Moss, Nicholas Pitcher Oriental Art

**David Baker** is showing a group of Song-dynasty ceramics from mainly private collections. This section includes a rare Southern Song vase with a Lung-chuan celadon glaze which was originally from the private collection of Roger Bluett and probably intended to be used as a flower container. There are similar pieces in the Palace Museum and Japanese collections. Also on offer is a selection of Chinese works of art and ceramics from the Tang dynasty through to the Qing period.

**John Berwald** is showcasing recent acquisitions, with a special focus on Chinese ceramics, sculpture and works of art from the Han to the Qing. A special area of interest is Chinese ceramics from the 17th century. **Prahlad Bubbar's** exhibition is *Flowers and Geometry*, featuring Indian, Islamic and Himalayan art. Each object selected has been chosen for a material quality or trace, however it they also have a symbolic meaning, a *raison d'être* that transcends its function. **Eskenazi Ltd** are showing part two of the exhibition *Six Dynasties Art from the Norman A Kurland Collection* that encompasses Chinese art from the 5th and 6th centuries. Part two features 38 works including two highly important early Buddhist sculptures alongside rare and exceptional examples of earthenware, metalwork and textiles. Highlights include a limestone Maitreya, Northern Wei dynasty, from the Longmen cave temple complex, a limestone bust of Buddha, Northern Qi period (550-577), and a bronze dragon from the Six Dynasties period, dating to the 6th century. Also on offer are two Chinese silk textiles from the same period, one shows lions, elephants and camels, the

Continued on page 24





Round lacquer kagamibako (mirror box) by Ogawa Haritsu (Ritsuo) (1663–1747), inlaid with a ceramic Hannya mask, 17/18th century, diam. 16.3 cm, Sydney Moss

other depicts dragons in confrontation.

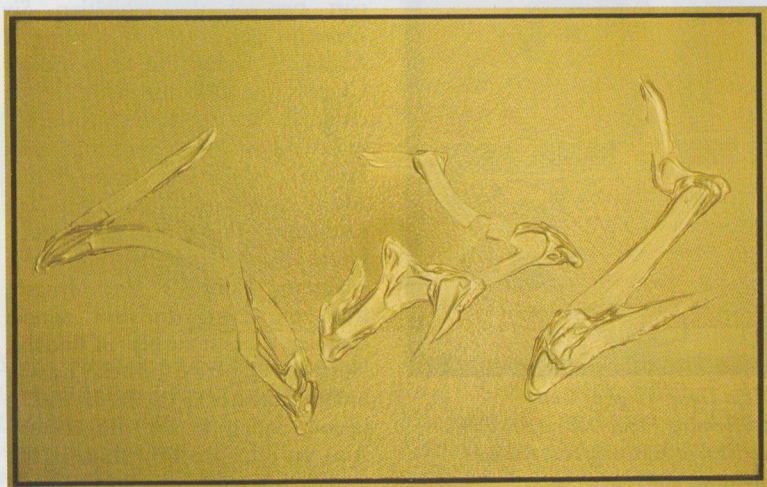
This year **Francesca Galloway** is showing an important group of Indian paintings from the Ludwig Habighorst collection, dating from the late 16th to the early 19th centuries. Highlights include the two Bilaspur *Bhagavata Purana* folios and the Guler portrait of *Raja Dalip Singh* attributed to Pandit Seu. Other paintings are compelling for their insight into the human psyche, such as the madness of love or the wrath of the gods. The characters of the 'Small Mankot' *Ramayana* are likewise filled with human emotion.

At **Ben Janssens Oriental Art** the theme of the show is *Animals and Flowers*, including a range of early Chinese sculpture, bronzes, ceramics and later Chinese and Japanese works of art.

Japanese folklore and *bakemono* (ghosts) and their brethren are the theme for the exhibition this year at **Sydney L Moss**. The show includes



Shade under the Moonlight (2014) by Wang Chao, waterbased woodcut, 68 x 48 cm, ArtChina



Gaze (2017) by Tian Wei, acrylic on canvas, 93 x 150 cm, courtesy of the artist and October Gallery

lacquer work, pipecases, *intro* and *netsuke*, including a *sake* jar 'ghost' netsuke in wood, showing a young boy humorously up-ending a sake flask, using cloth as a cape to create a hooded ghost puppet, from the Osaka region, circa 1800, and a wood netsuke of a dancing *oni* with an *okame* mask by Deme, Edo, circa 1800.

### CHELSEA DESIGN CENTRE AND BLOOMSBURY

ArtChina, Kamal Bakhshi Modern Asian Art, Genrokuart, Han Collection, October Gallery (and in Bloomsbury), Singapore Art Garret Gallery

Several galleries have grouped together at this building known for interior-design shops in Chelsea. **Art China** are showing the works of young, emerging Chinese artists, all of whom are honing their skills both in China and here in the UK. Works at the gallery include painting, sculpture and prints. A featured artist is Wang Chao, a professor at the China Academy of Arts and director of its noted Purple Bamboo Studio.

The **October Gallery**, in Bloomsbury, is having a solo show for Tian Wei, who was born in Xi'an, China, but who has worked in California and since 2011 has been based back in China, in Beijing. Tian Wei's work constructs a bridge between things that appear as dyadic opposites, binary poles or complementary pairs. This perspective of *yin* and *yang* is deeply embedded in Chinese thinking, and the artist's frequent reference to Classic Chinese texts such as the *I Ching* (The Book of Changes) and *Tao Te Ching*, credited to Laozi, appear as quotations in minute script patterning the background upon which larger semi-abstract cursive shapes are drawn.

## ASIAN ART in LONDON

### Auctions and London Previews



Blue and white 'Ladies Working Silk' vase, Kangxi period, height 34 cm, est. £16/20,000, Chiswick Auctions



Imperial Spinach Green Jade 'Wulao Tu' Brushpot, Qing dynasty, Qianlong period, Est. £300/500,000, Sotheby's



Namban lacquer shrine, seigan, Japan, Momoyama period, 16th century, 42 x 31 x 6 cm, est. £70/100,000, Sotheby's



Famille-rose figure of a lady, China, Qianlong period (1736–1795), height 51 cm, est. Euro 10/15,000, Lempertz

### BONHAMS

**Preview:** at Bonhams 101 New Bond Street, 4 to 7 November

**Sale:** The Julius and Arlette Katchen Collection of Fine Netsuke: Part III, 6 November at 2pm

**Sale:** The Ollivier Collection of Early Chinese Art: A Journey Through Time, 8 November at 10.30am

**Sale:** Fine Japanese Art, 8 November at 11 am and 2pm

**Sale:** Fine Chinese Art, 8 November at 11 am and 2pm

Highlights from the Ollivier Collection include two Chinese archaic bronzes vessels from the Western Zhou dynasty (1047–772 BC), a *gui* and a *jia*, with a combined estimate over £100,000. Another highlight is a figure of a large Bactrian camel from the Tang dynasty.

### CHISWICK AUCTIONS

**Preview:** at Chiswick Auctions, 1 Colville Road, Chiswick, London, 3 to 9 November

**Sale:** Asian Art I: Kangxi Defining an Era and Fine Chinese Paintings, 12 November; Asian Art II, 13 November at 10am

This is the auction house's fourth dedicated sale of Chinese painting, including Huang Binhong, Zhang Daqian, as well as the Hong Kong artist Lui Shou-kwan. A highlight of the Kangxi sale, part of Asian Art I, is a blue and white 'Ladies Working Silk' vase.

### CHRISTIES

**Preview:** Christie's, 8 King Street, 2 to 5 November

**Sale:** Fine Chinese Ceramics & Works of Art, 6 November, 10.30 am and 2pm

A section of the lots on sale come from the Chinese Hardstone Carvings from the Late John Pearce (1918–2017) Collection. Many of the lots were purchased from the renowned Chinese art dealer TY King in the 1950s and 1960s. Lots from another private collection on offer are from the Soame Jenyns Collection, including a gilt-bronze avalokitesvara, Xuande six-character mark and of the period (1426–1435). The 138 lots comprising Soame Jenyns Collection of Japanese and Chinese Art online sale runs from 1 to 8 November. Other highlights include a blue and white Ming-style moonflask (*bianhu*) with a Yongzheng six-character seal mark of the period (1723–1735) from a private European collection.

### SOTHEBYS

**Preview:** Sotheby's 34 to 35 New Bond Street, London 4 to 9 November, starting at 12 pm on 4 November

**Sale:** Fine Japanese Art, 6 November at 10.30am; Important Chinese Art, 7 November 10 am; St George's Street Sale, 9 November, 10 am

This is the first Japanese sale held by Sotheby's in London for quite some time. Highlights from this sale include Japanese armour, including a leather *hon-kozane* red lacquered *nimai-do tosei gusoku* from the Edo period, 18th century, with the whole set of armour made of hardened leather apparatus from the neckguard, which is made of iron. From the Momoyama period (16th century), there is a *namban* lacquer shrine, or *seigan*, with two hinged doors opening to reveal an inner frame containing a picture of Christ inset into a shallow box form and inset in mother-of-pearl on a black *roironuri* ground.

In the Chinese sale, there are two imperial Qianlong-period jades of note, a Khotan jade washer, Qianlong period and a spinach green jade *wulao tu* brushpot. Imperial ceramics include a white-glazed, double-gourd vase, Qianlong mark and period from the Detring/von Hanneken Collection. Other ceramics on offer are a *famille-rose* 'One Hundred Boys' vase, Jiaqing seal mark and period and a blue and white 'dragon' double-gourd vase, Jiaqing seal mark and period.

### LYON AND TURNBULL

**Preview:** Highlights at the Hellenic Centre, 16–18 Paddington Street, London 1 to 6 November

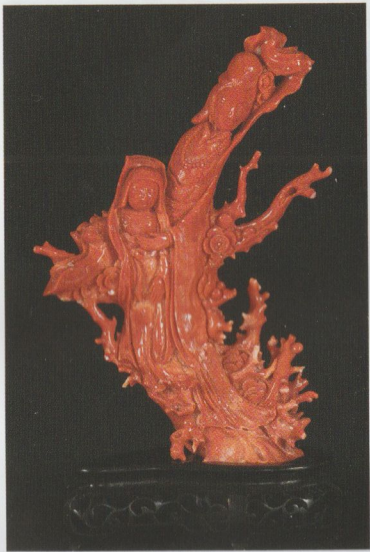
**Sale:** Fine Asian Works of Art, 22 Connaught Street, London, 7 November, 4pm



Large white jade cranes group, Qianlong period (1736–1795), length 16.5 cm, est. £30/50,000, Christie's



## Previews in London



Carved coral with guanyin and child, China, late 19th century, est Euro 8/12,000, Cambi



Cloisonné censer in the shape of a luduan, China, Qianlong six-character mark and of the period, height 39.4 cm, est Euro 100/150,000, Nagel

### BRUUN RASMUSSEN

**Preview:** Shapero Modern, 32 St George Street, London, 4 to 6 November

**Preview:** Copenhagen, 22 to 26 November

**Sale:** Asian Art, Copenhagen, end of November

### CAMBI

**Preview:** in the new head office, 23 Bruton Street, London, 3 to 8 November

**Sale:** Fine Chinese Works of Art, Milan, 18 December; Chinese Works of Art, Milan, 19 December  
Highlights include Qing-dynasty porcelains, and a carved coral of Guanyin and child, China, late 19th century.

### DUKES

**Preview:** Royal Over-Seas League, St James',

5 to 7 November

**Viewing:** Dorchester, 9-11 November

**Sale:** Fine Asian Art, Dorchester, 12 November, 10 am

### LEMPERTZ

**Preview:** Illustration Cupboard Gallery, 22 Bury St, St James', 1 to 6 November

**Viewing:** Cologne, 1 to 6 December

**Sale:** Fine Asian Art I, 7 December, 10 am

**Sale:** Fine Asian Art II, 8 December, 10 am  
Highlights of the sales include an imperial cloisonné enamel 'eight Buddhist emblems' alms bowl,



Chinese wucai cup, Kangxi period (1662-1722), painted with flowers by a rock, from the Roy Davids collection, diam 4cm, est £5/8,000, Sworders

China, Qianlong period (1736-1795) with four character mark and of the period and a famille-rose figure of a lady, Qianlong period, height 51 cm.

### NAGEL

**Preview:** The Pine Room, The Westbury, 37 Conduit Street, London,

3 to 6 November

**Viewing:** Salzburg, 3-5 December

**Sale:** Fine Asian Art, Salzburg, 6 and 7 December, 9.30am  
This wide-ranging sale that includes Buddhist bronzes and Tibetan thangka, Chinese porcelains, lacquers and paintings, alongside stone works and Chinese furniture.

A considerable section of the sale is dedicated to a number of lots from some distinguished private collections, such as Imperial porcelains and works of art from the collection of Gustav Detring



Cinnabar lacquer circular 'lotus' box and cover, Ming dynasty, early 15th century, diam. 7.5 cm, est £10/15,000, Roseberys

(1842-1913) and his son-in-law Constantin von Hanneken (1854-1925), who were active at the imperial court of the late Qing dynasty, and the collection of Franz Karl Ivo Streich (1857-1920), a German diplomat in consular service, stationed in Swatow as vice consul from 1889 to 1906. A highlight is a 'nine dragon' moonflask, Qianlong-period with six-character seal and mark of the period, a Qianlong-period copper-red and underglaze blue 'Buddhist lion' vase, and a Qianlong-period cloisonné censer in the shape of a luduan (auspicious creature).

### ROSEBERYS

**Preview:** The Nine British Art, 9 Bury Street,

3 and 4 November

**Viewing:** Knights Hill Saleroom, 8 to 11 November

**Sale:** Asian Art, West Norwood,

London, 12 November, 10 am

A rare Chinese cinnabar lacquer circular 'lotus' box and cover, Ming dynasty, early 15th century, finely carved to the lid with central lotus seed pods inside an engraved lozenge band, and a row of stylised lotus petals, the base carved with a matching band of lotus petals, recessed, black lacquered base, black lacquered interior, 7.5cm diameter. A number of cinnabar boxes of this design are accompanied by a matching tray (Cf. Christies Hong Kong, 1 December 2010, Lot 3076), suggesting that they were used in temple tea ceremonies.

### SWORDERS

**Preview:** 29 Charles Street, Mayfair, 1 and 2 November

**Viewing:** Stansted Mountfichet,

4 and 5 November

**Sale:** Asian Art, 6 November, Stansted Mountfichet, 10 am  
Highlights from this sale include a Chinese wucai cup, Kangxi period (1622-1722), from the Roy David's Collection, a 16th-century Sino-Tibetan bronze bodhisattva, and a cloisonné dish, from the Qianlong period.

### WOOLLEY & WALLIS

**Preview:** Highlights at 17 Clifford Street, 2/F, London, 3 to 6 November

**Viewing:** Salisbury,

10 to 14 November

**Sale:** Asian Art 1,

13 November, 10.30 am, Salisbury

**Sale:** Asian Art 2,

14 November, 10 am

**Sale:** Japanese Art,

14 November, 10 am

# ASIAN ART

## IN LONDON

### 1 - 10 November 2018

Asian Art in London, is an annual event uniting leading Asian art dealers, auction houses and societies in a series of gallery selling exhibitions, auctions, receptions and lectures. These are complemented by exhibitions and seminars at the leading museums.

[www.asianartinlondon.com](http://www.asianartinlondon.com)