

ASIAN ART IN LONDON 2017
2 - 11 November 2017 - 20th Anniversary Highlights

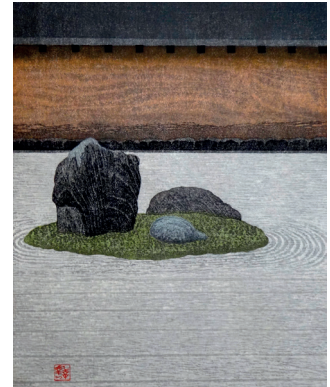
PRESS IMAGE SHEET - CONTEMPORARY WORKS OF ART



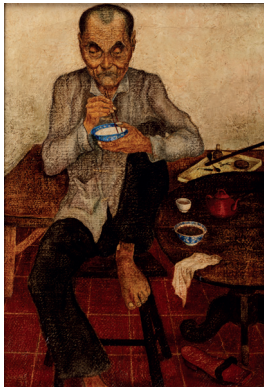
ARTCHINA, Cambridgeshire, UK
Sculptures in Wood by Yang Qi, 2012, Ludwig Galerie, Oberhausen. Qi Yang is the main artist in the *Between Being* exhibition during AAL at the Design Centre Chelsea Harbour



PRAHLAD BUBBAR LTD. London
Man Ray, *The Maharaja of Indore*, c.1930
Vintage gelatin silver print
28,5 X 23 cm (11 1/4 x 9 in.)



HANGA TEN, London
OHTSU, Kazuyuki (b.1935)
Kyoto Ryoanji Stone Garden
woodblock print



ROELL FINE ART, Maastricht, NL
Ernst Agerbeek (1903-1945)
Chinese man eating rice in a room with a tea pot and opium set, signed & dated E.Agerbeek 1927, 50 x 35 cm (19 3/4 x 13 3/4 in.)



KAMAL BAKSHI, London
Tamekane Yoshikatsu (b.1959)
A Fluxed 20, 96.5 x 66.5 cm (38 x 26 in.)



AKTIS GALLERY, London
Zao Wou-Ki (1920-2013)
Untitled, 1950, signed and dated lower right
Ink on paper, 34 cm sq. (13 1/2 in)



JAMES STANFORD: CONTEMPORARY BUDDHIST ART, Las Vegas, Nevada
Image from exhibition *Shimmering Zen*, artist James Stanford, mixed media photographic and digital



ONE EAST LARASATI, Singapore
Arie Smit, *Balinese Temple*, 1979,
Acrylic on paper
40 cm sq (15 3/4 in sq)



SIMON PILLING, London
Rooster
Japanese, Showa period, 1950s
hammered and assembled copper
40 x 16 x 30 cm (15 3/4 x 6 1/3 x 12 in)