

ASIAN ART IN LONDON 2016

3 - 12 November - HIGHLIGHTS

PRESS IMAGE SHEET - ANTIQUE WORKS OF ART



ROSEMARY BANDINI, London
Naito Toyomasa, Tanba
c.1820 a signed, wood netsuke of two wrestling monkeys from AAL exhibition of *Japanese Netsuke, Lacquer and Works of Art*



JOOST VAN DEN BERGH, London
Flayed Human Skin as Lingam
Tibet, 19th-20th century, distemper on textile, from AAL exhibition *Magic Markings, Tantra, Jain & Ritual Art from India*



COHEN & COHEN, London
A rare Chinese eggshell porcelain ruby back teabowl and saucer (saucer above) with tiger and cub in famille rose enamels, from AAL exhibition *TigerTiger*



JOHN ESKENAZI, London
Reclining male figure
Gandhara, 4th/5th century, painted stucco from AAL exhibition of *Recent Acquisitions*.



MALCOLM FAIRLEY, London
A bronze and *shakudo* group of monkeys by Oshima Joun, signed on a gilt plaque, c.1900, from AAL exhibition *Recent Acquisitions* including a collection of spearhead covers.



PETER FINER, London
An iron multi-plate helmet of 31 lames, Tibet/Mongolia/China, 16th century from AAL exhibition of *Islamic and Oriental Arms and Armour*.



SAM FOGG, London
(Detail) A 15 metre painted scroll of the *Madel Puranamu*, illustrating story of *Daksha-Yajna* and *Virabhadra*, Deccan, Telangana, early 20th century, on cloth, opaque pigments, from AAL exhibition *A Library of Manuscripts from India*.



FRANCESCA GALLOWAY, London
The Glimpse of Krishna, Illustration to the *Bihari-Satsai Series*, 1780-1790, one of the *Pahari Paintings* from the Seitz Collection on view during AAL 2016.



GENROKUART, Rome & Tokyo
Rare, early example of porcelain ewer in shape of a European figure seated on a gourd, decorated with overglaze polychrome enamels, Arita, Japan, 1657-1660, from AAL exhibition *Four Hundred Years of Japanese Porcelain*.

ASIAN ART IN LONDON 2016
3 - 12 November - HIGHLIGHTS

PRESS IMAGE SHEET - ANTIQUE WORKS OF ART



NICHOLAS GRINDLEY, New York & Suffolk, UK
Photograph of a Chinese archer by Georges Auguste Morache from AAL exhibition *The Photography of Dr Georges Auguste Morache (1837-1906)*



BEN JANSSENS ORIENTAL ART, London
Bronze censer in form of an elephant, China, Ming dynasty, 16th-17th century, from AAL exhibition *In Scholar's Taste*.



ROGER KEVERNE, London
A fine jade incense burner and cover, China, 18th century, from AAL exhibition of *Chinese Works of Art*.



MARCHANT, London
A Chinese Imperial porcelain blue and white and underglaze copper-red deep bowl, the interior painted with a carp, 6 character Kangxi mark and of period, 1662-1722, from AAL exhibition *Kangxi Blue and White and Underglaze Copper-Red*.



MIKA GALLERY / SHOUUN ORIENTAL ART, New York & Tokyo
Pot
Middle Jomon period (3,000 - 2,000 BC)
Earthenware



PRIESTLEY & FERRARO, London
A Cizhou white-glazed sgraffiato jar, Song dynasty (960-1279) or Jin dynasty (1115-1234) from AAL exhibition *Chinese and Korean Ceramics and Works of Art*.



SIMON RAY, London
Emerald Wine Cup, India (Mughal) 18th century carved emeralds set with gold mounts dated AH 1300/1882-3 AD from AAL exhibition *Indian & Islamic Works of Art*.



ROELL FINE ART, Maastricht, NL
Portrait of a Chinese girl with grasshoppers and a toad by Victor Stephanovich Podgourski (1893-1969), signed and dated, gouache on brown paper, from AAL exhibition *From Distant Shores*.



ROSSI & ROSSI, London
(Detail) *Shākyamuni's Miracles*, 14th century, distemper on cotton from AAL exhibition *Classical Selection 2016*.

ASIAN ART IN LONDON 2016
3 - 12 November - HIGHLIGHTS

PRESS IMAGE SHEET - ANTIQUE WORKS OF ART



RUNJEET SINGH, Warwickshire, UK

from AAL exhibition *Arms and Armour from the East*.



GRACE TSUMUGI FINE ART, London
A rare blue and white porcelain dish of double flower form with autumn leaves, Arita Ware, Kakiemon kiln, Japan, 17th century, from AAL exhibition *Recent Acquisitions*.



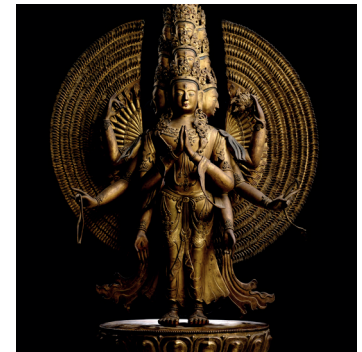
BONHAMS, London
(Detail) One of a pair of rare portraits of a Nobleman and Royal Lady, late Qing dynasty, from auction at New Bond Street of *Fine Chinese Art*, 10 November 2016.



CHRISTIES, King Street, London
A rare gilt-bronze figure of Guanyin, 17th century, from auction of *Fine Chinese Ceramics & Works of Art*, 8th November 2016.



LYON & TURNBULL, Edinburgh
A celadon jade figural group of a boy washing an elephant, Qing dynasty, 18th/19th century, from auction at *Asia House, London*, 8th November 2016



NAGEL AUKTIONEN, Stuttgart
A very large and massive cast gilt-bronze model of Avalokitesvara, Tibeto-Chinese, 18th century, from auctions *Fine Asian Art I & II*, 9th & 10th December 2016, in Stuttgart.



SOTHEBYS, London
A rare Ru-type Vase, Qianlong seal mark and period, from auction of *Important Chinese Art*, 9th November 2016.



WOOLLEY & WALLIS, Salisbury, Wilts
An important Chinese Imperial *doucai* jar and cover, mark and period of Yongzheng, from auction *Asian Art I & II*, 15th November 2016.